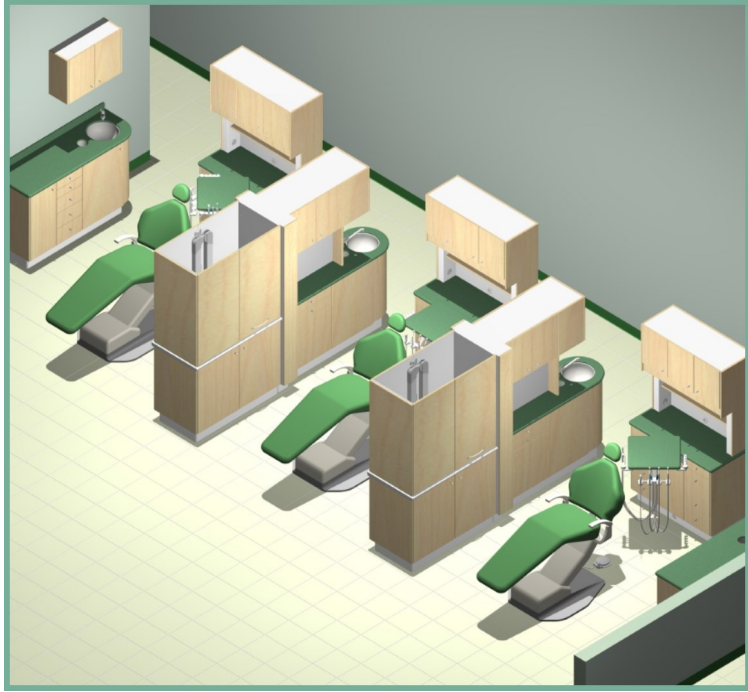


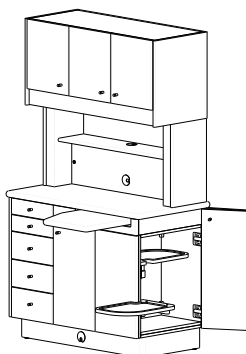
Bow Wood
cabinet systems

SPECIFICATIONS BOOK

Designed to fit. Built to perform.

We Accommodate All Brands and Types of Delivery Systems and Major Dental Equipment.





<i>ORDERING INFORMATION</i>	<i>1A</i>
<i>WARRANTY</i>	<i>1A</i>
<i>REAR SUPPORT CABINETS</i>	<i>1-11</i>
<i>REAR SUPPORT PEX</i>	<i>12-14</i>
<i>CENTRE ISLAND CABINETS</i>	<i>15-20</i>
<i>SIDE CABINETS</i>	<i>21-24</i>
<i>STERILIZATION CENTRE CABINETS</i>	<i>25-29</i>
<i>MOBILE CARTS</i>	<i>30</i>

- ➊ *SELECT A STANDARD CABINET*
- ➋ *ADD OPTIONAL CONFIGURATION FEATURES*
- ➌ *ADD OPTIONS AND ACCESSORIES*
- ➍ *PICK YOUR COLORS*

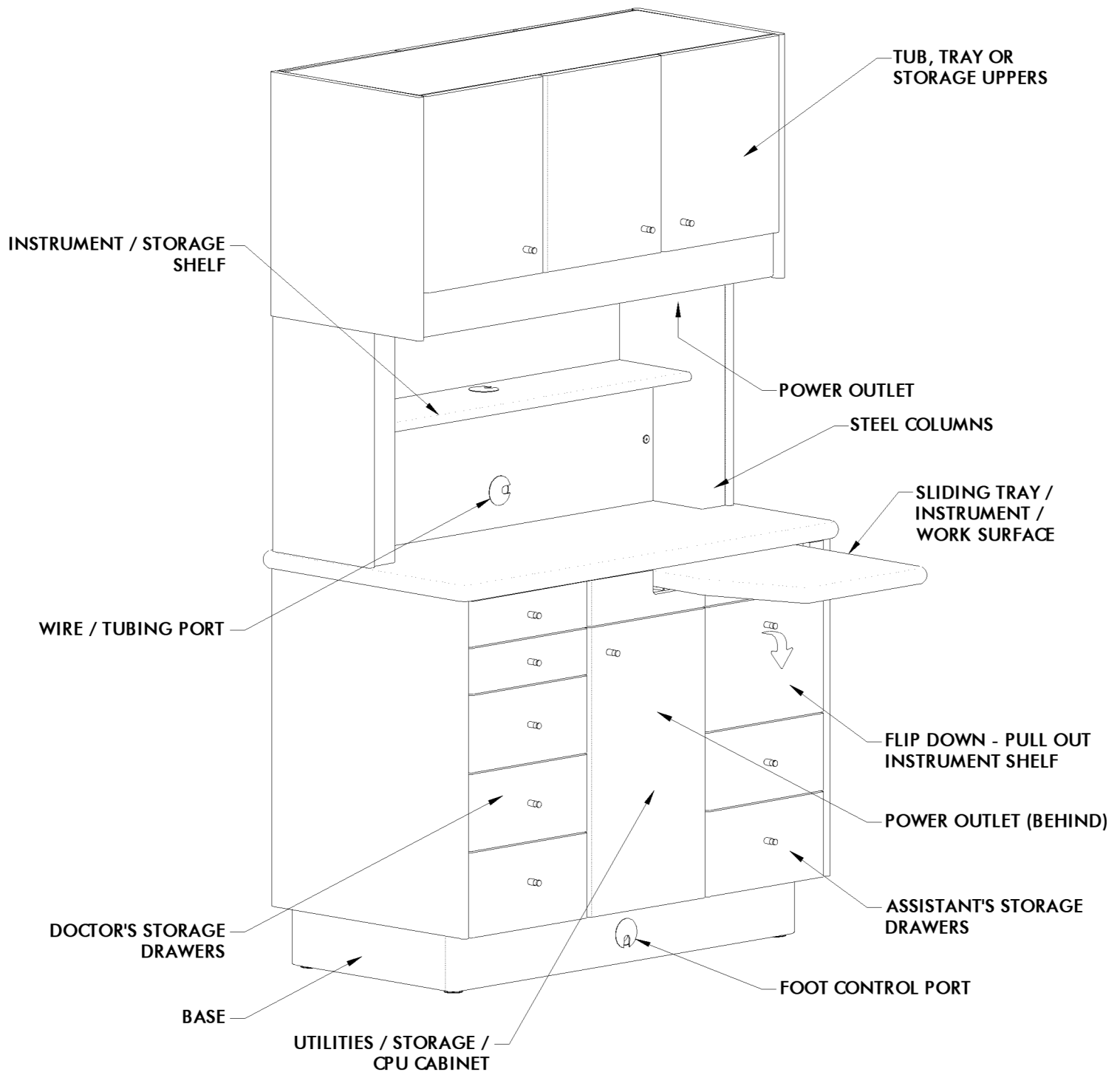
Check or circle appropriate selections on a photocopied order checklist. Fill in the prices on your choices as appropriate, total, and indicate the quantity required. Please fill in separate checklist for each cabinet unless all options are identical. Upon finalizing an order, Bow Wood will provide a line drawing, pricing sheet and a delivery date. Allow six weeks for standard orders, custom orders may take longer.

The following pages show standard configurations and designs. Bow Wood has extensive capabilities in specialist requirements and equipment accommodation. If you require dimensions or layouts different to these shown, please contact us and we will be pleased to provide customized designs to suit your project requirements.

WARRANTY

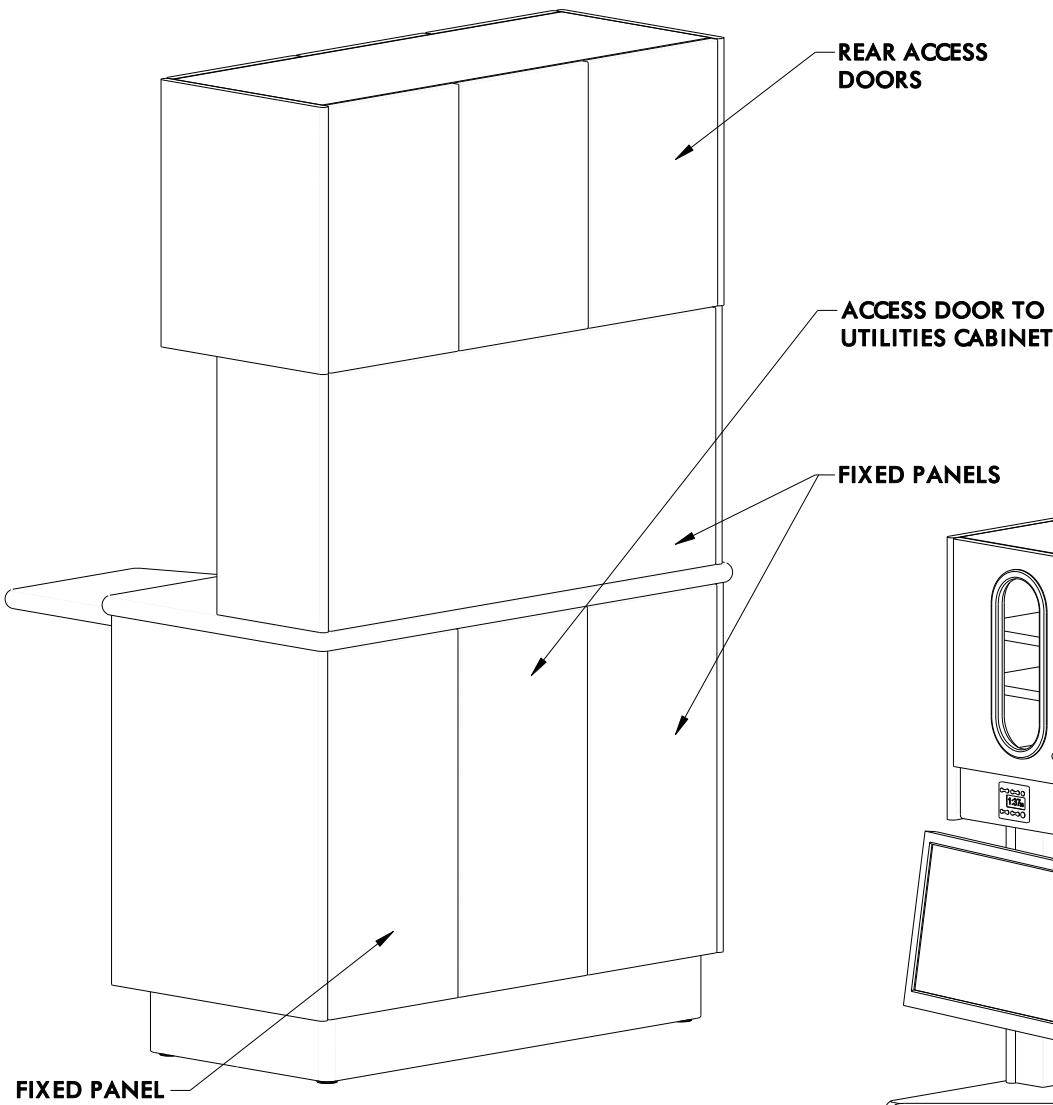
FIVE YEAR WARRANTY

Guaranteed to be free from defects in workmanship and materials for five years from the date of purchase. Warranty covers the replacement of defective parts or components only (labor not included). Warranty does not cover damage by misuse, improper installation or accident. Warranty does not cover damage or discoloration caused by cleaning or disinfecting processes and chemicals. Freight damage is the responsibility of the freight carrier.

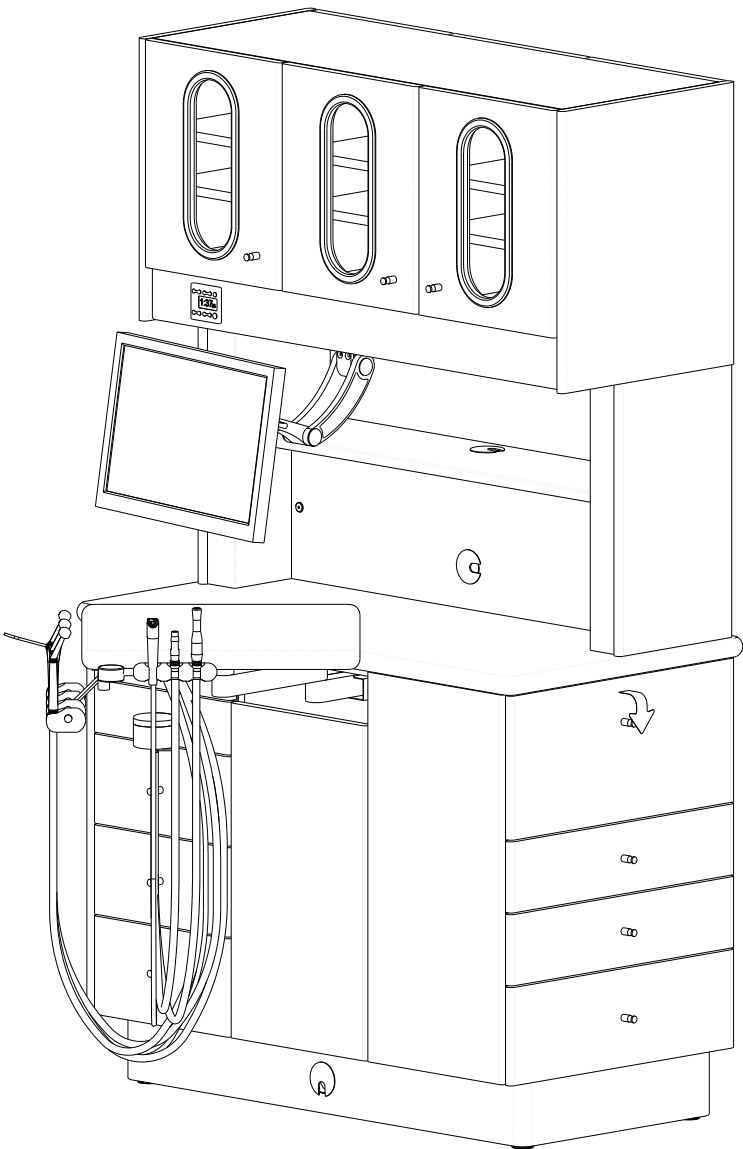


RS/RS12

REAR SUPPORT CABINETS
PRODUCT FEATURES



RS / RS12
FINISHED BACK



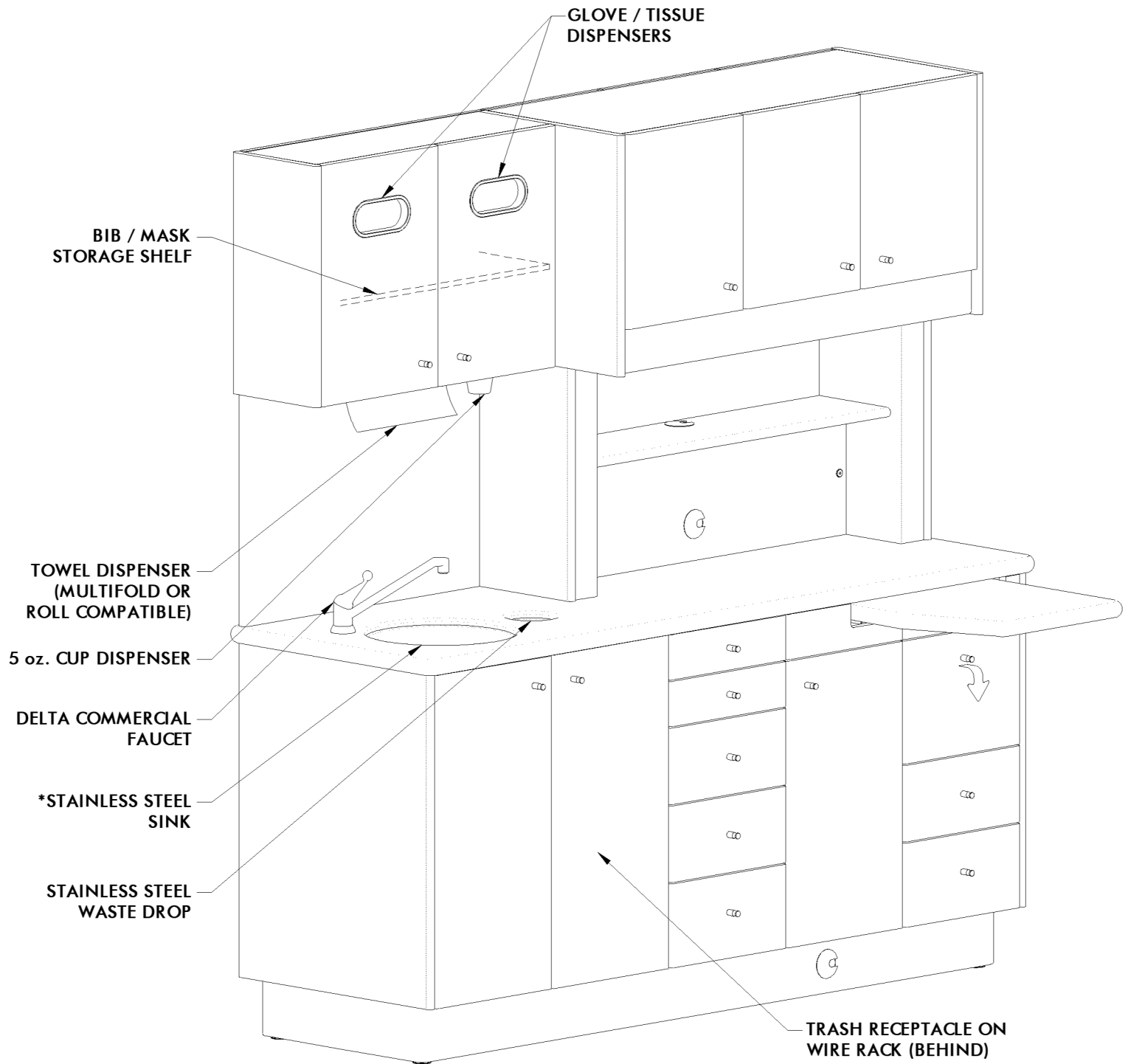
RS / RS12
FACTORY INSTALLED OPTIONS

REAR SUPPORT CABINETS

PRODUCT FEATURES

(In Addition to Features Shown On RS / RS12)

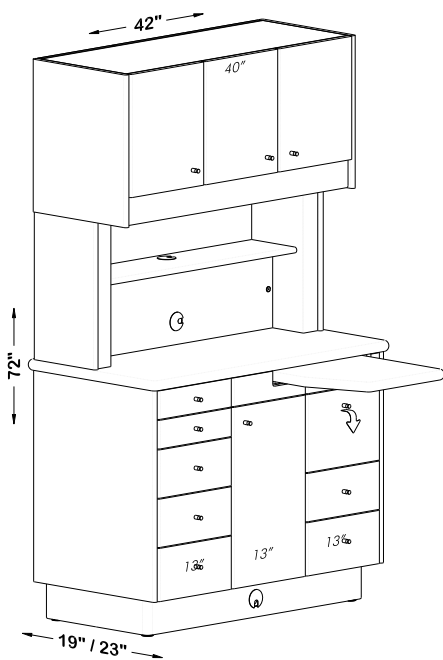
BowWood
cabinet systems



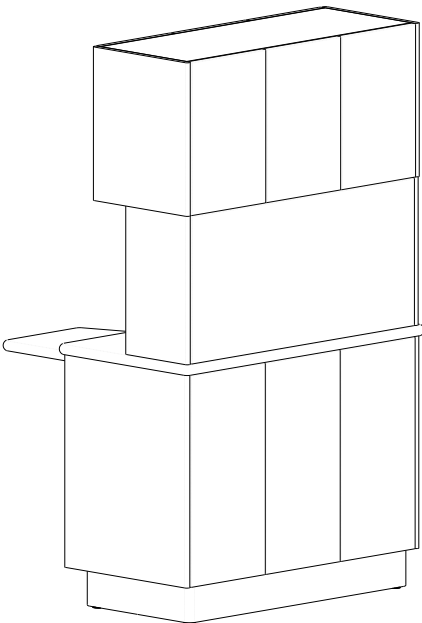
RS1 / RS2

*Sink under mounted when ordered w/ Solid Surface countertop

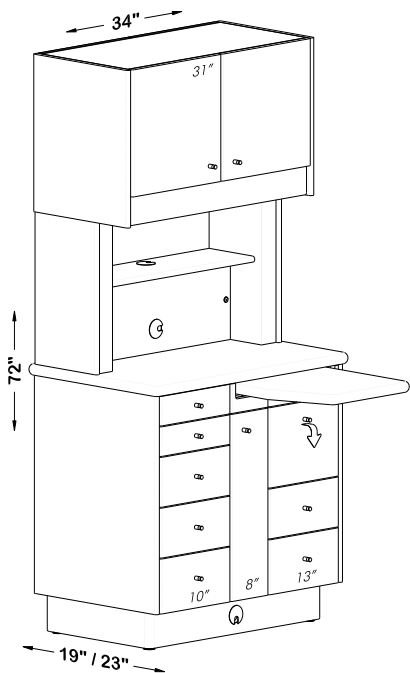
REAR SUPPORT CABINETS
STANDARD CONFIGURATIONS



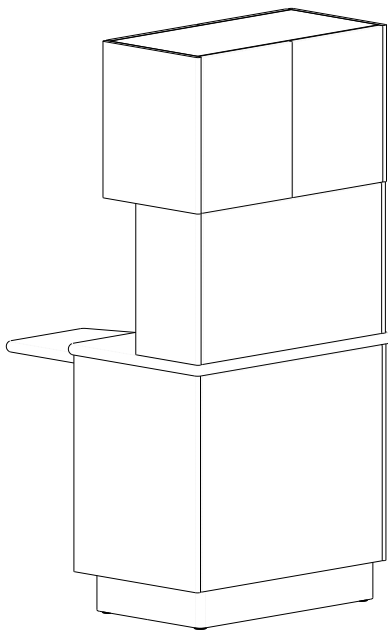
RS 19" or 23"



*w/ STANDARD FINISHED BACK
AND PASS THROUGH UPPERS*



RS12 19" or 23"

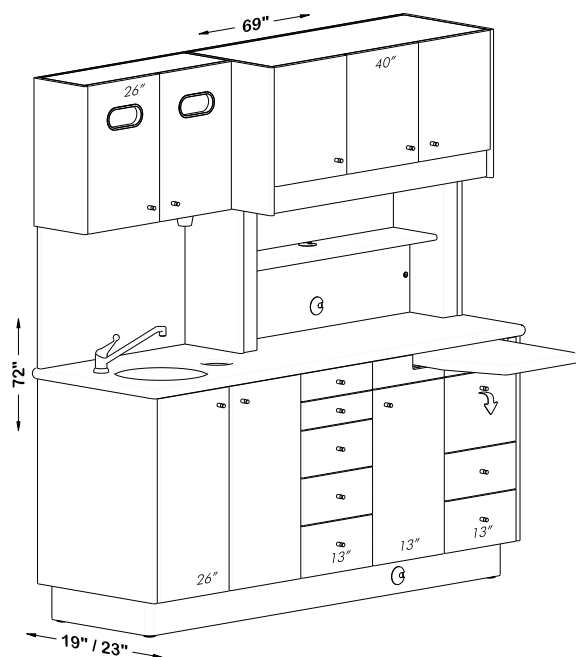


*w/ STANDARD FINISHED BACK
AND PASS THROUGH UPPERS*

REAR SUPPORT CABINETS

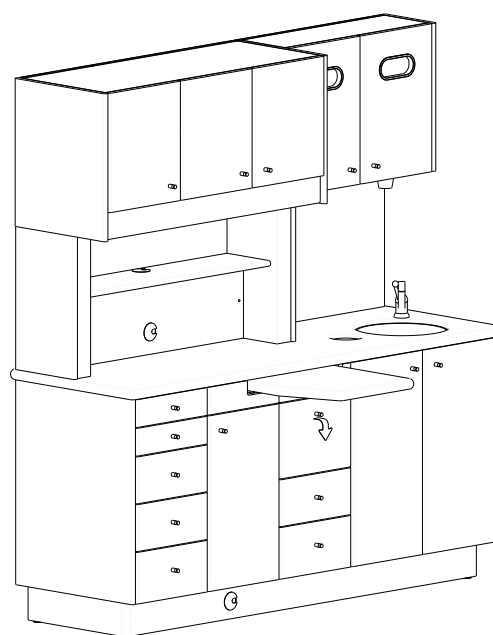
STANDARD CONFIGURATIONS

BowWood
cabinet systems

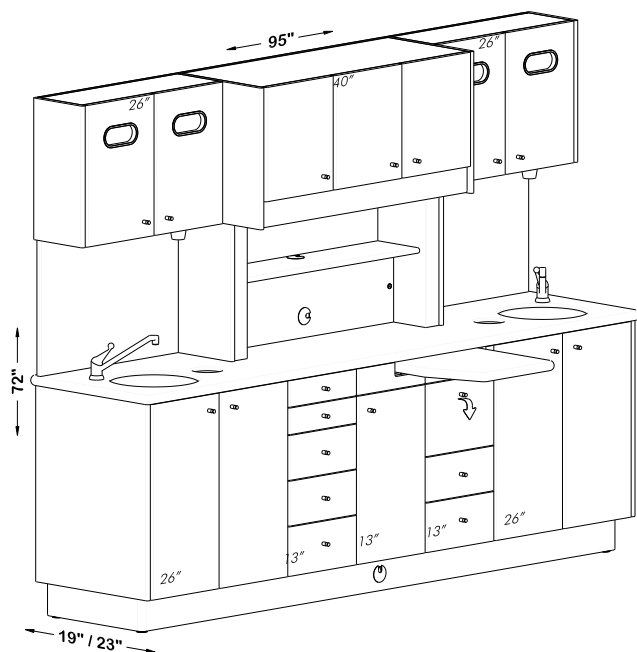


RS1 L - Doctor's Side Sink
19" or 23"

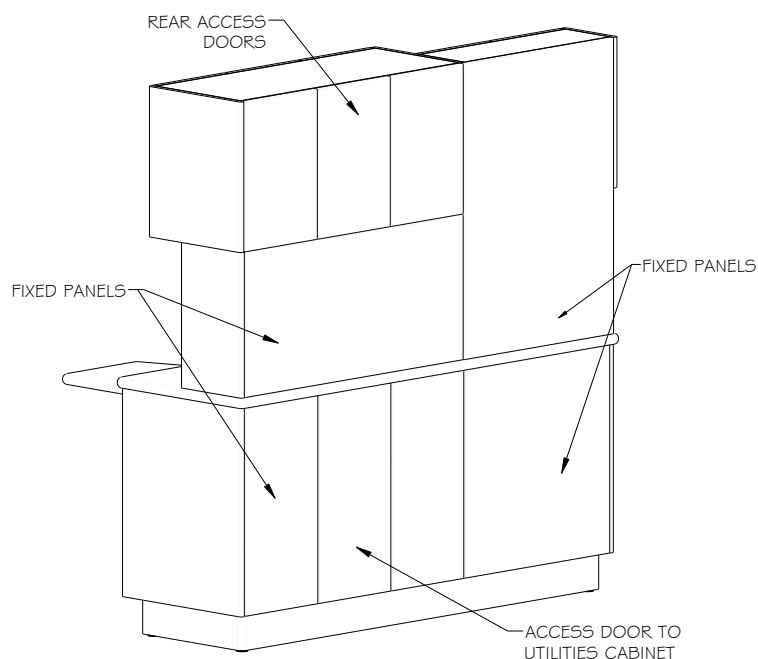
← OR →



RS1 R - Assistant's Side Sink
19" or 23"

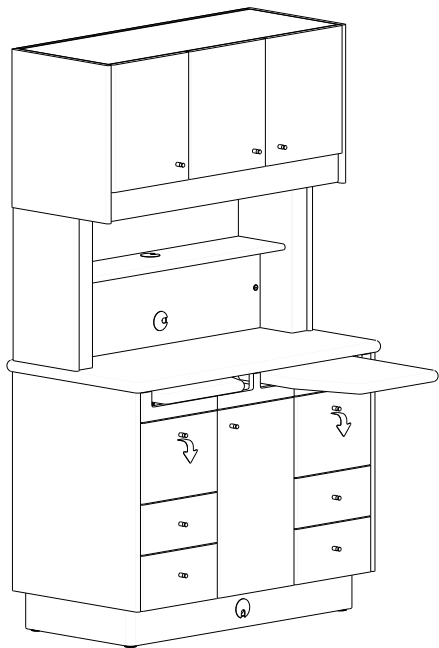


RS2 - Standard
19" or 23"

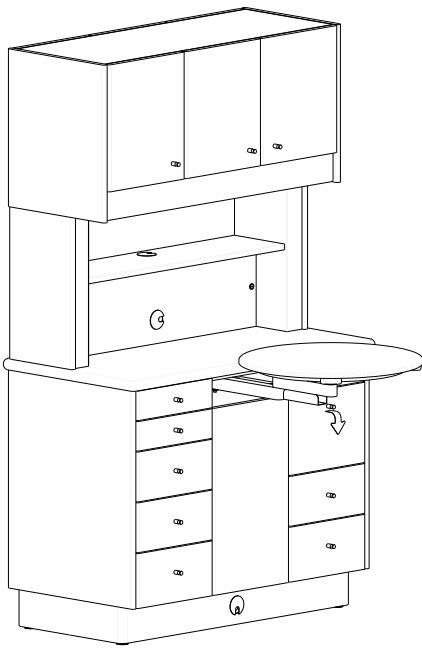


RS1 / RS2
Finished Back

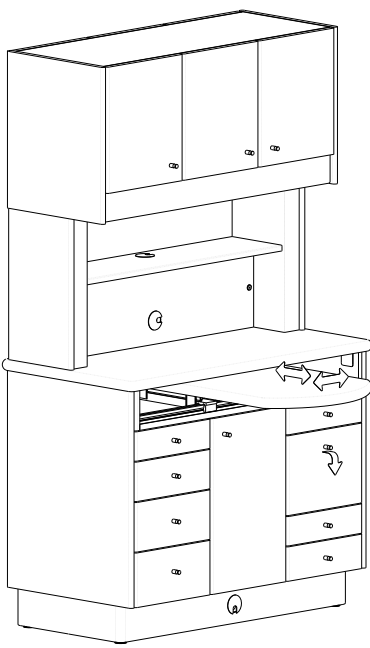
REAR SUPPORT CABINETS
OPTIONAL CONFIGURATIONS



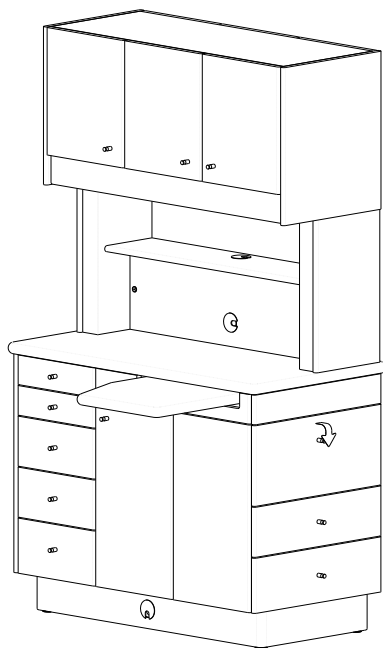
DUAL L/R PULL-OUT COUNTERS



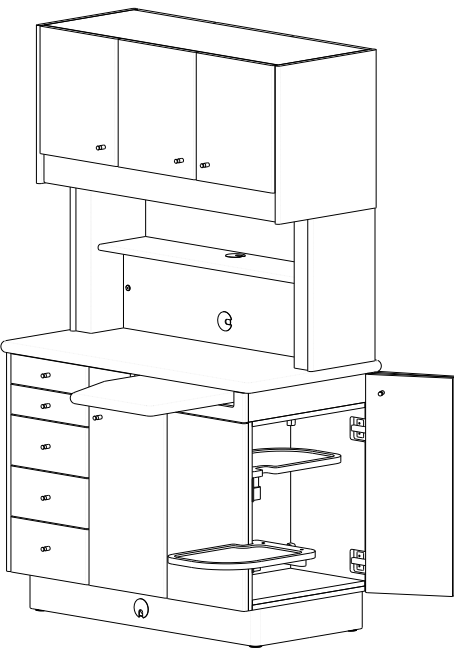
DUO SWING TABLE



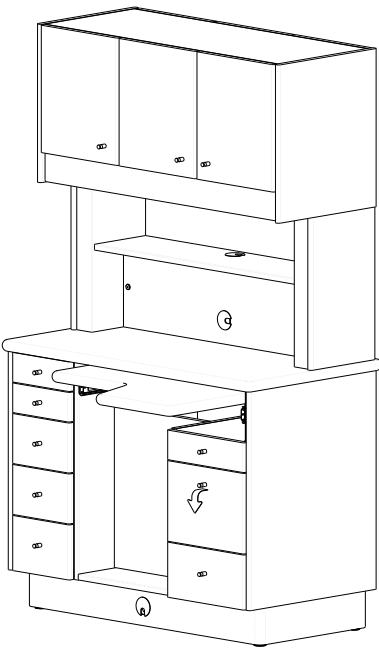
LINEAR SLIDING COUNTER



SIDE OPENING DRAWERS



SIDE OPENING SWING TRAY (2)

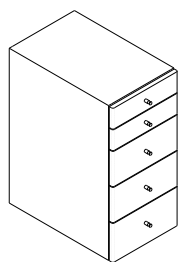


FOREST PULL-OUT

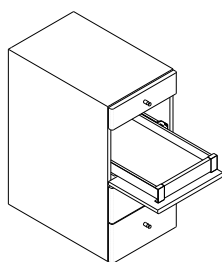
REAR SUPPORT CABINETS

DRAWER BANK OPTIONS

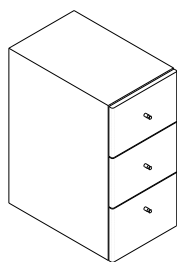
BowWood
cabinet systems



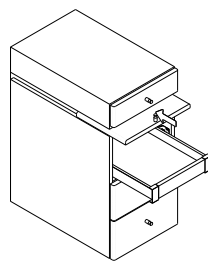
DOCTOR'S STYLE



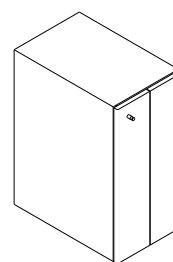
ASSISTANT'S STYLE



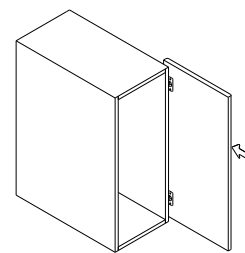
EQUIPMENT STYLE



FLIP & PUSH STYLE



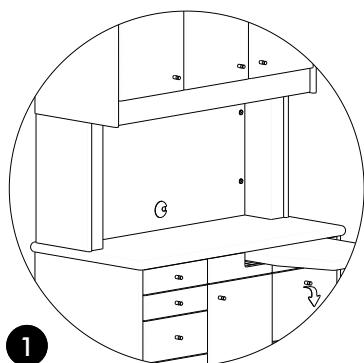
BI-FOLD STYLE



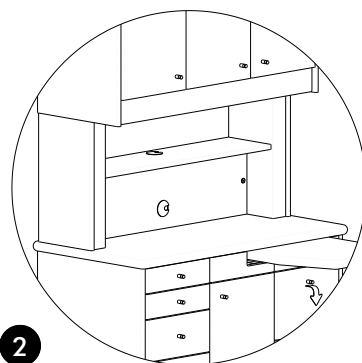
POCKET STYLE

Standard doctor's or assistant's drawers may be exchanged for any style shown above.

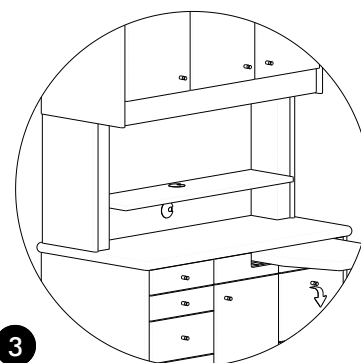
MID-SECTION HUTCH OPTIONS



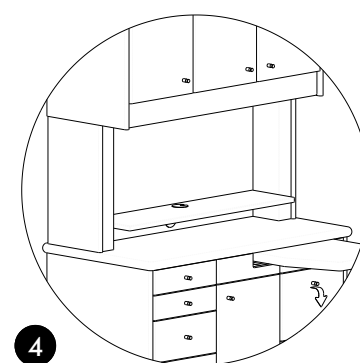
1
FULL SPLASH



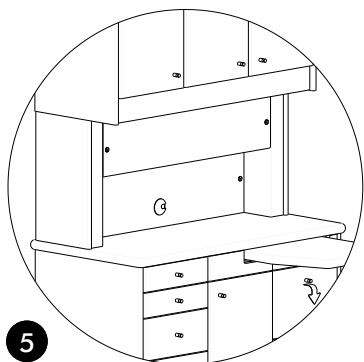
2
STANDARD SHELF



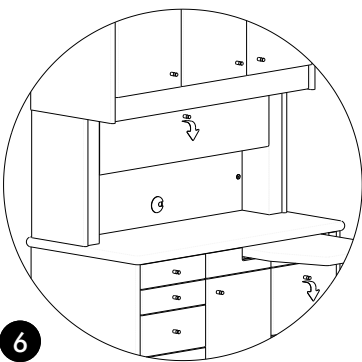
3
HALF HEIGHT SHELF



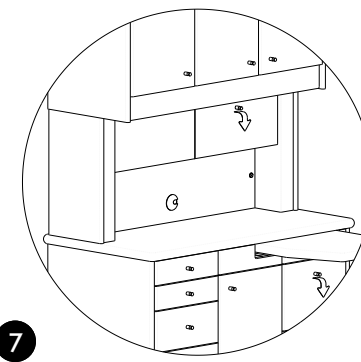
4
QUARTER HEIGHT SHELF



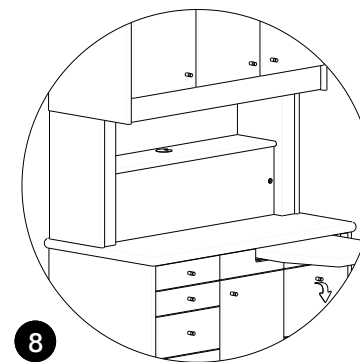
5
UPPER ACCESSORY PANEL



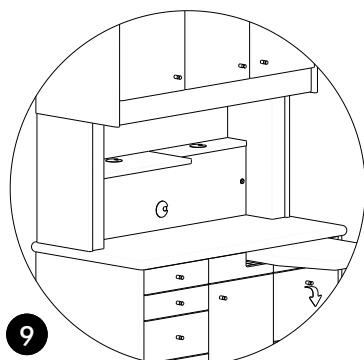
6
UPPER STORAGE



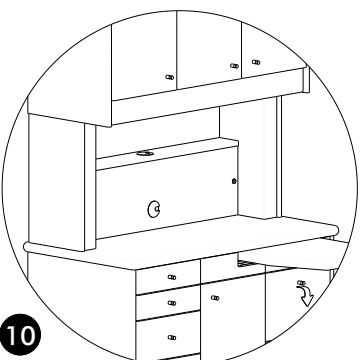
7
SPLIT STORAGE/ACCESSORY



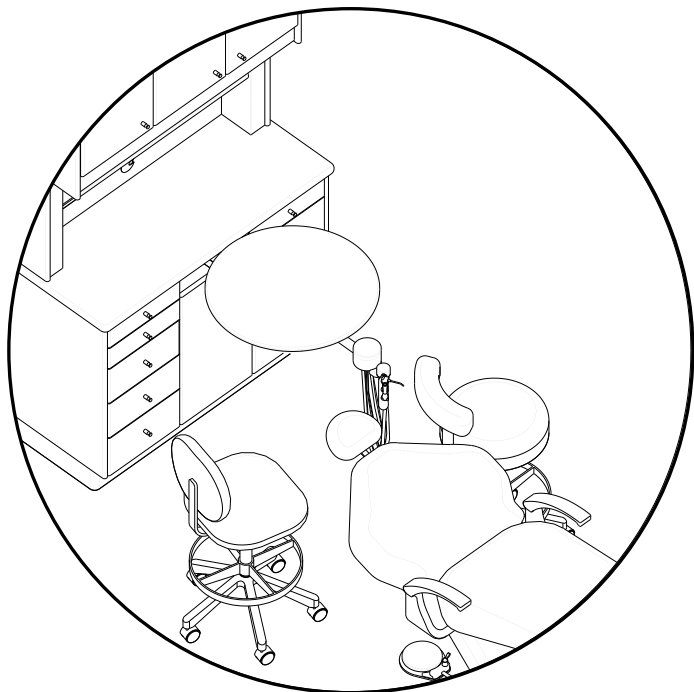
8
BASE ACCESSORY PANEL



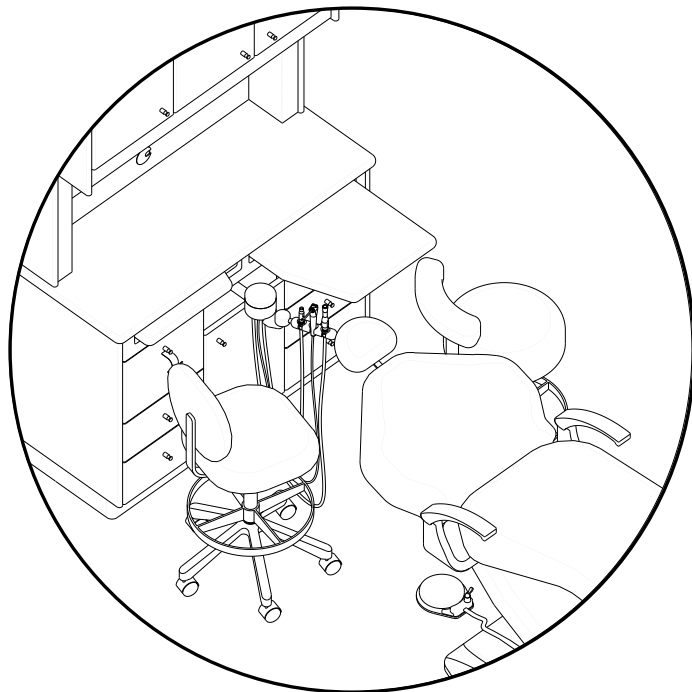
9
SPLIT SHELF



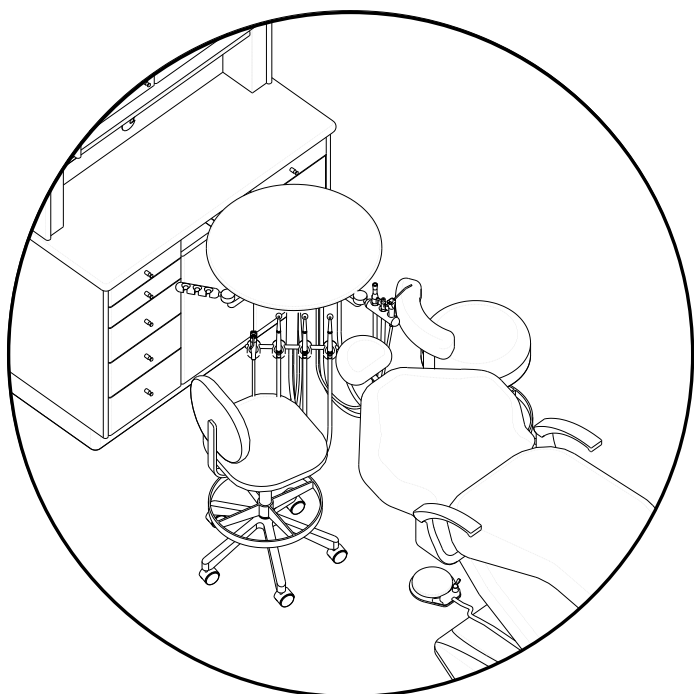
10
SHALLOW SHELF



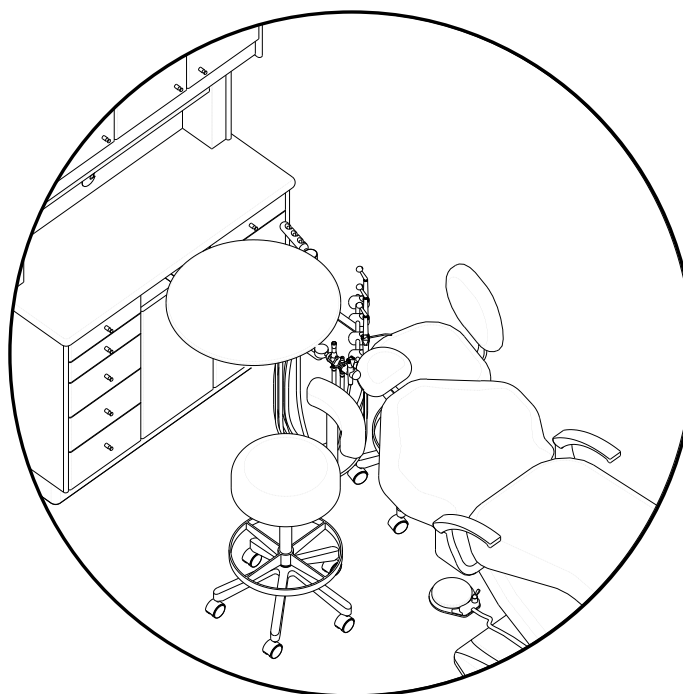
ASSISTANT'S ARM - SWING TABLE MOUNT



***ASSISTANT'S ARM
 STANDARD OR DUAL PULL-OUT MOUNT***



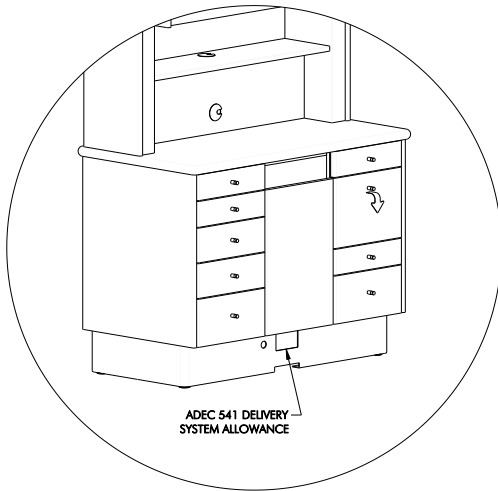
AMBIDEXTROUS DOCTOR'S & ASSISTANT'S COMBINATION



REAR SUPPORT CABINETS

OPTIONAL REAR DELIVERY EQUIPMENT*

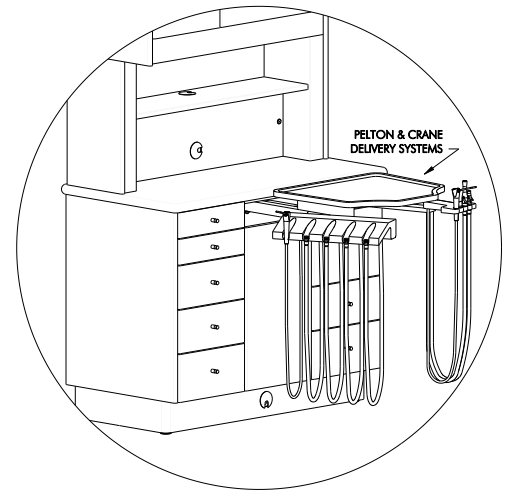
Bow Wood
cabinet systems



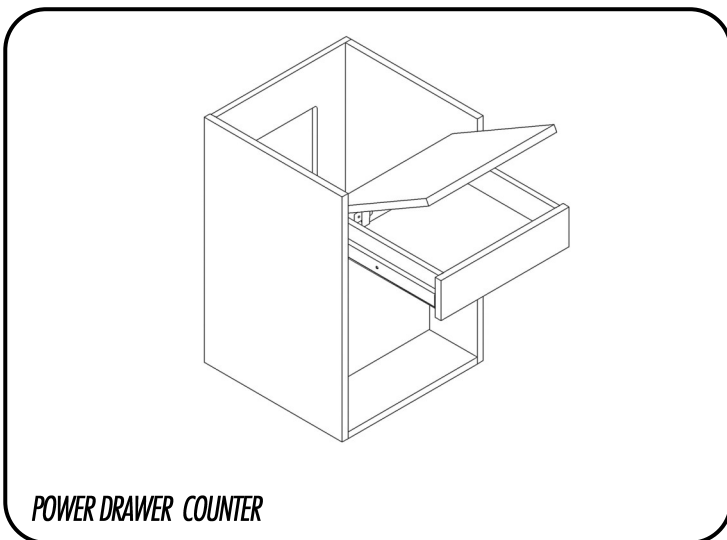
ADEC DELIVERY SYSTEM ALLOWANCE



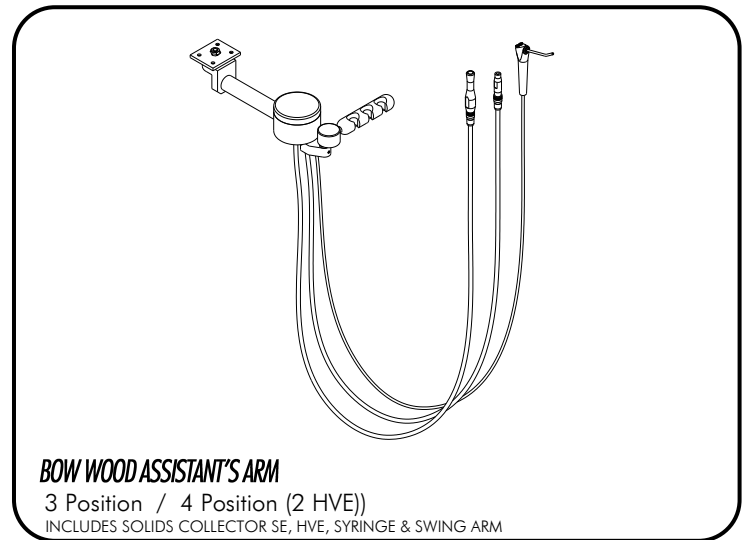
MIDMARK SWING TABLE ALLOWANCE



PELTON & CRANE DELIVERY ALLOWANCE



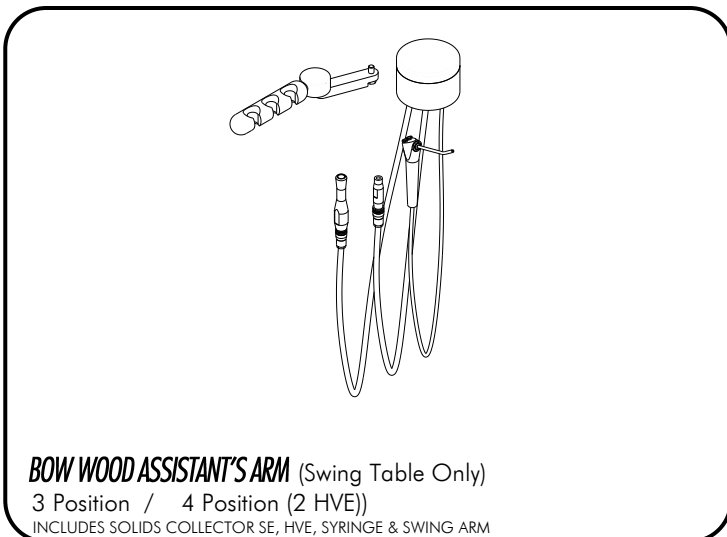
POWER DRAWER COUNTER



BOW WOOD ASSISTANT'S ARM

3 Position / 4 Position (2 HVE)

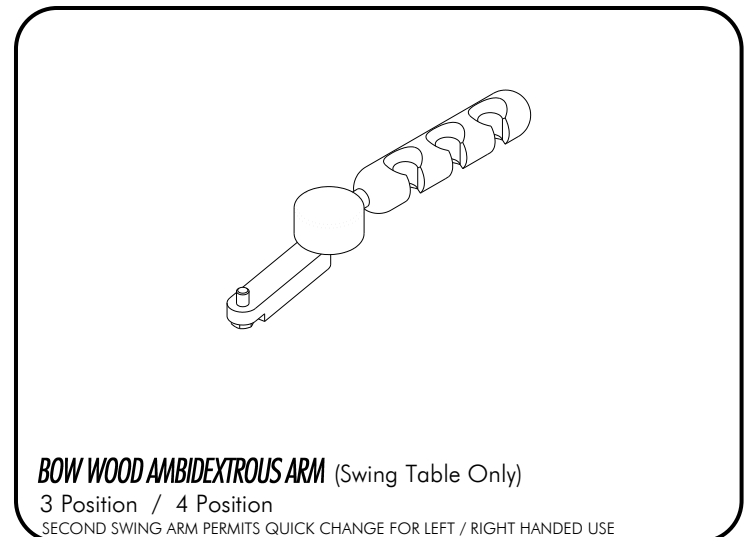
INCLUDES SOLIDS COLLECTOR SE, HVE, SYRINGE & SWING ARM



BOW WOOD ASSISTANT'S ARM (Swing Table Only)

3 Position / 4 Position (2 HVE)

INCLUDES SOLIDS COLLECTOR SE, HVE, SYRINGE & SWING ARM



BOW WOOD AMBIDEXTROUS ARM (Swing Table Only)

3 Position / 4 Position

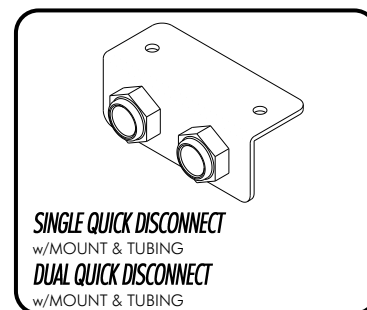
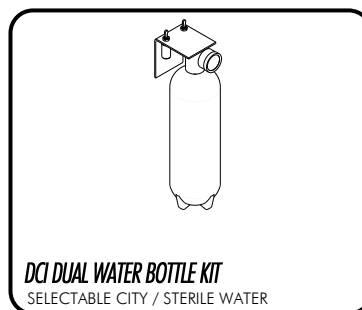
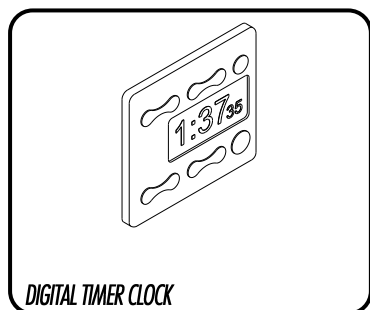
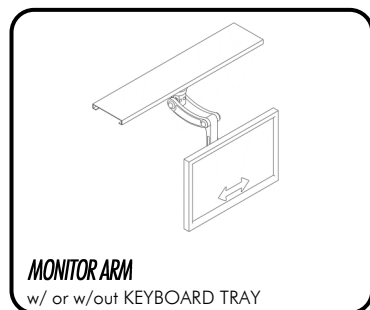
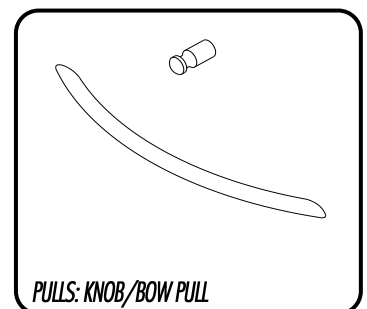
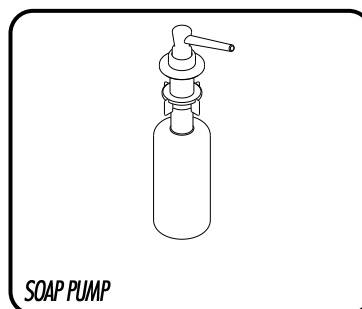
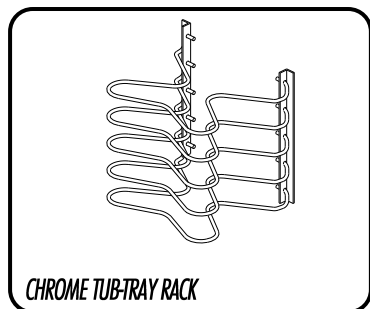
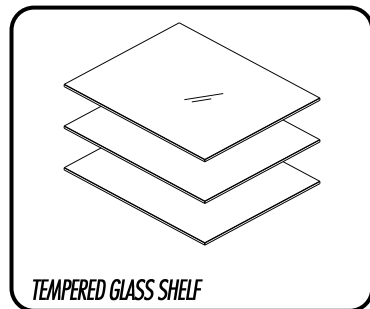
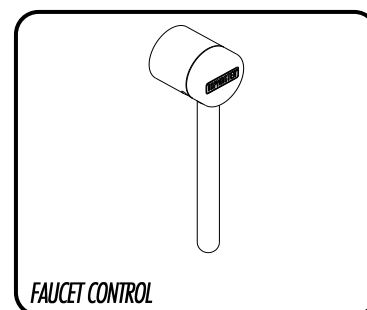
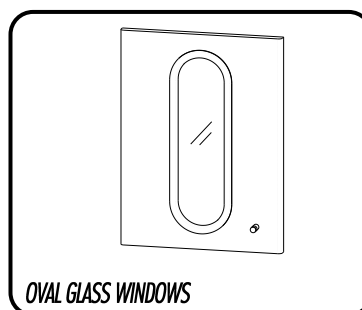
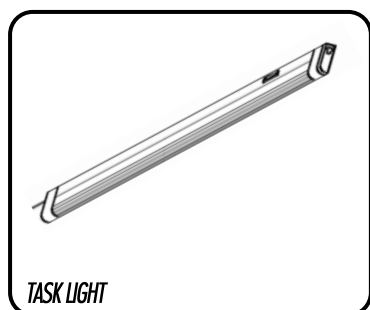
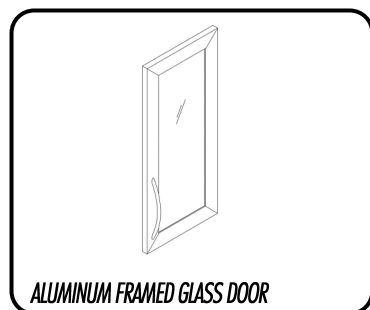
SECOND SWING ARM PERMITS QUICK CHANGE FOR LEFT / RIGHT HANDED USE

*** 6 MONTH WARRANTY**

REAR SUPPORT CABINETS

OPTIONS AND ACCESSORIES

BowWood
cabinet systems



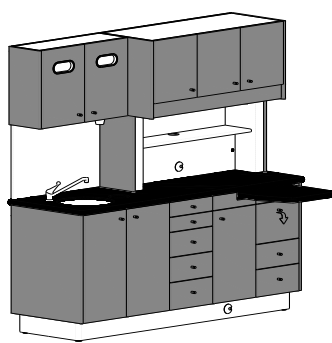
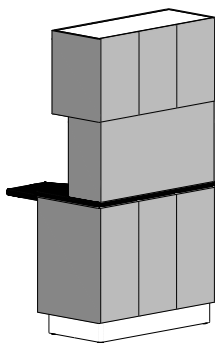
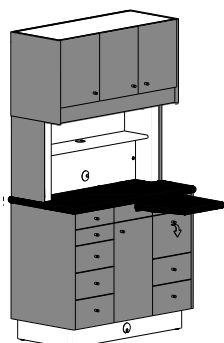
COLOR LOCATIONS

□ = BASE COLOR

■ = ACCENT

■ = FINISHED BACK

■ = COUNTER TOP



SPECIAL COLOR INFORMATION

Other solid surface colors and laminates from Wilsonart, Formica, Nevamar and Pionite are available, subject to an additional charge, per color, per order. Color sample chips and other information is available on the internet and at local dealers specializing in these materials.

BASE COLOR

- Surf
- Antique White

COUNTER TOP COLORS

Solid Surface

Meridian Series - See brochure for standard options.
Signature Series - See brochure for standard options, or specify color required.

ACCENT / FINISHED BACK COLORS

Meridian Series - See brochure for standard options.

Signature Series - Specify color required.

Plastic Laminate

Meridian Series - See brochure for standard options.

Signature Series - Specify color required.

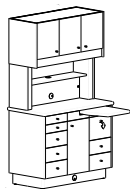
Special order colors can be specified in Signature Series, upcharge may apply.

REAR SUPPORT CABINETS

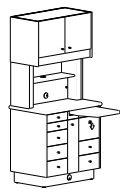
ORDER CHECKLIST

PLEASE MARK AN "X" CLEARLY IN THE APPROPRIATE BOXES

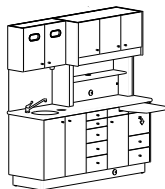
1 STANDARD CONFIGURATIONS



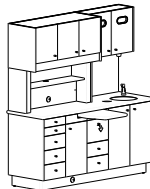
☐ RS



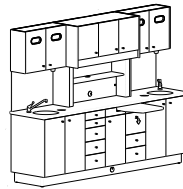
☐ RS 12



☐ RS1 L

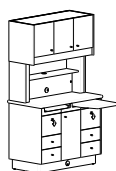


☐ RS1 R

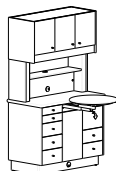


☐ RS2

2 OPTIONAL CONFIGURATIONS



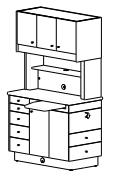
☐ Dual L/R
Sliding Counters



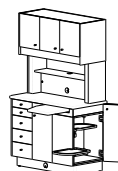
☐ Duo
Swig Table



☐ Linear
Sliding Counter



☐ Side
Opening Drawers
☐ Dr ☐ Ast

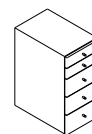


☐ Side Opening
Swing Tray
☐ Dr ☐ Ast

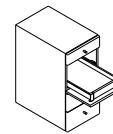


☐ Forest
Pull-out

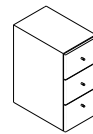
4 BANK OPTIONS



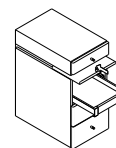
DR



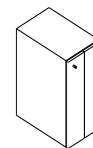
AST



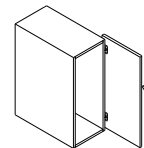
EQ



FP



BI



PS

Dr's Side: DR AST EQ FP BI
PS
Ast's Side: DR AST EQ FP BI PS
(Circle One)

3 HUTCH OPTIONS

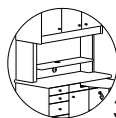
- ☐ (1) Full Splash ☐ (2) Standard Shelf
☐ (3) Half Shelf ☐ (4) Quarter Shelf
☐ (5) Upper Accessory Panel
☐ (6) Upper Storage
☐ (7) Split Storage/Accessory
☐ (8) Base Accessory Panel
☐ (9) Split Shelf ☐ (10) Shallow Shelf



1



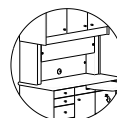
2



3



4



5



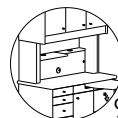
6



7



8



9



10

Finished Back: ☐ Yes ☐ No
Depth: ☐ 23" ☐ 19"
Countertop: ☐ Solid Surface
☐ Laminate

5 OPTIONS & ACCESSORIES

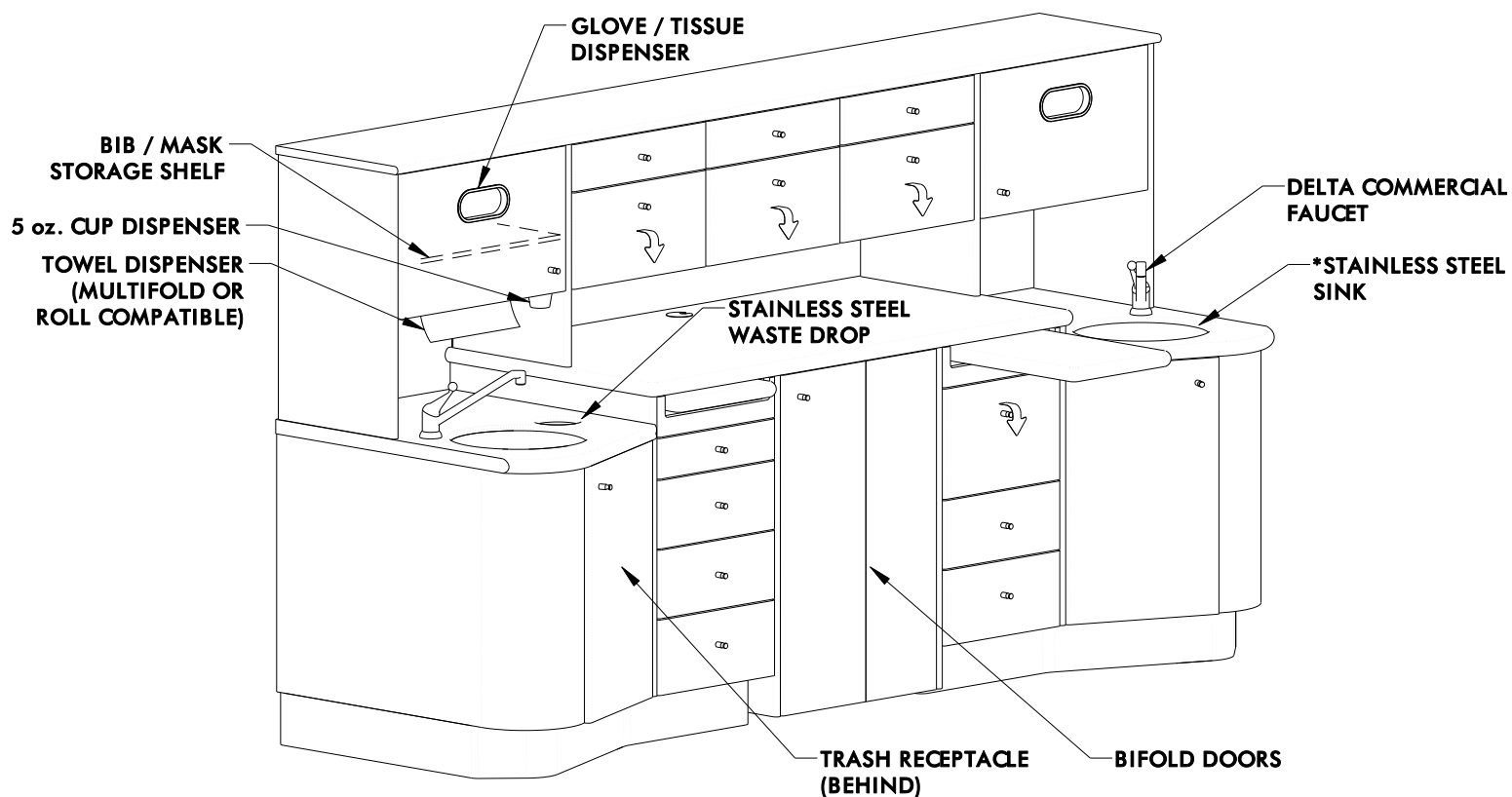
- Hardware: ☐ Knob ☐ Bow-Pull
Task Light: ☐ No ☐ Yes
Oval Windows: ☐ No ☐ Yes (Qty: ____)
Tempered Glass Shelves: ☐ No ☐ Yes (Qty-pkg of 3: ____)
Extra Glove Dispensers: ☐ No ☐ Yes (Qty: ____)
Chrome Tub/Tray Racks: ☐ No ☐ Yes
Soap Pump: ☐ No ☐ Yes
Digital Timer Clock: ☐ No ☐ Yes
Foot Activated Faucet: ☐ No ☐ Yes
Monitor Arm: ☐ No ☐ Yes (w/ KEY TRAY ☐)
DCI Water Bottle Kit: ☐ No ☐ Yes
Quick Connect: ☐ No ☐ Single ☐ Dual

Additional Options / Notes: _____

6 COLORS

Base Color: ☐ Surf ☐ Antique White Finished Back Color: _____ Countertop Color: _____
Accent Color: _____ (Colors chosen other than Bow Wood Select may be subject to an upcharge):

Doctor's Name: _____ Approved By: _____ Number of Units: _____



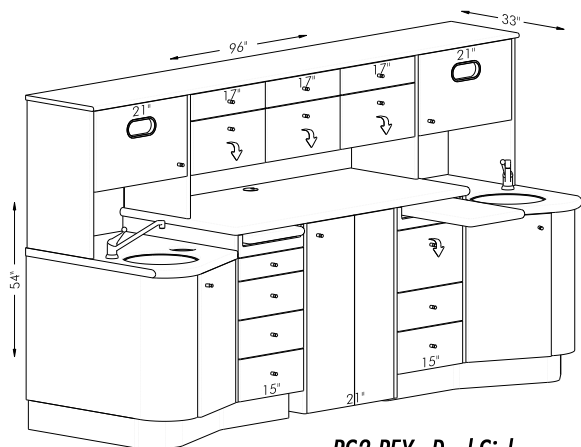
RS2 PEX

*Sink under mounted when ordered w/ Solid Surface countertop.
This cabinet is a direct replacement for a P & C 'Executive Cabinetry'.

REAR SUPPORT PEX

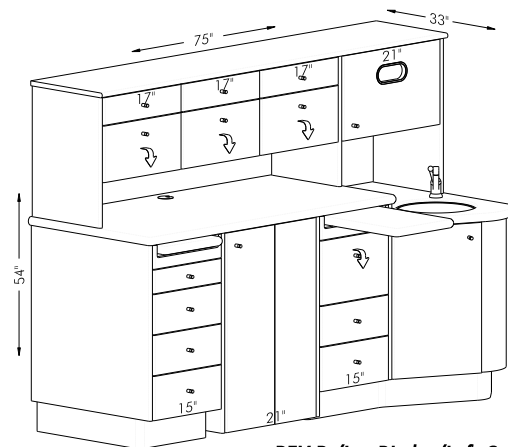
STANDARD CONFIGURATIONS

BowWood
cabinet systems



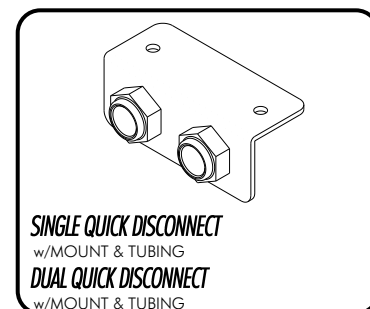
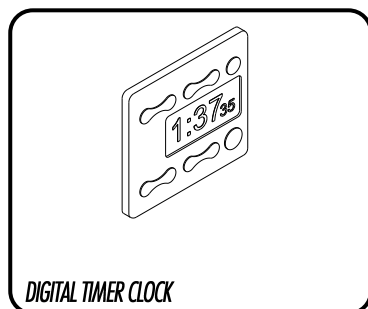
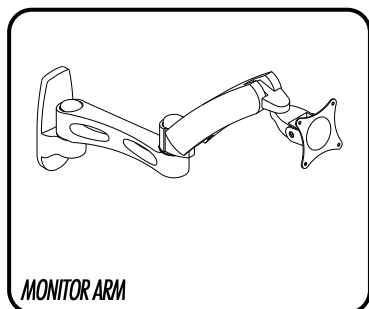
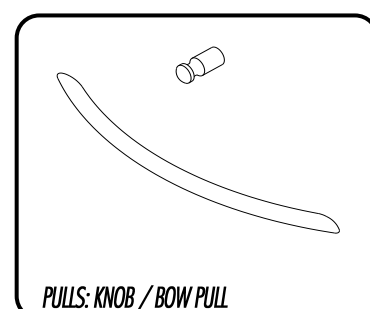
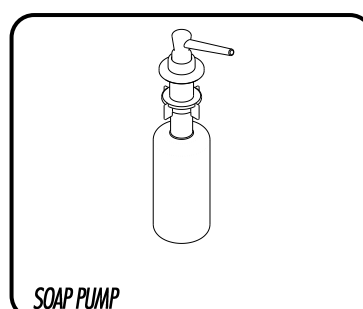
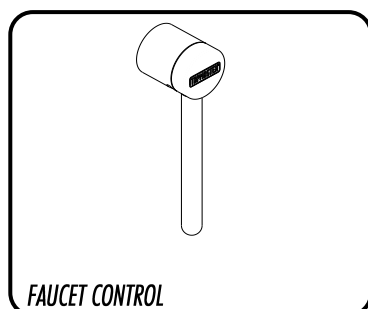
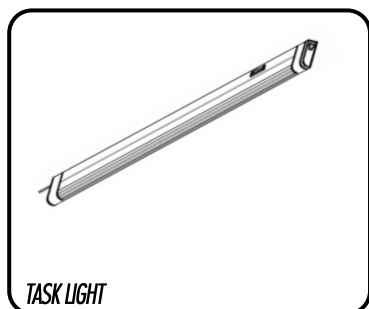
RS2 PEX - Dual Sink

← OR →

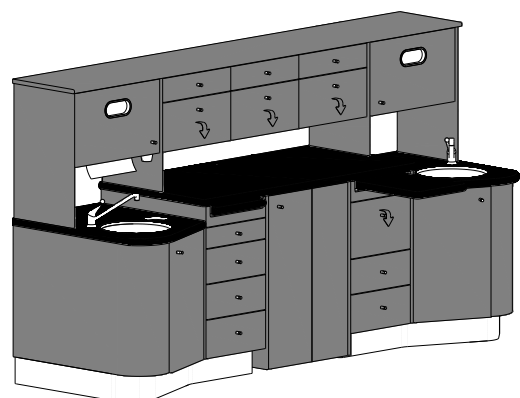


PEX-R/L - Right/Left Sink

OPTIONS & ACCESSORIES



COLOR LOCATIONS



□ = BASE COLOR

■ = ACCENT

■ = COUNTER TOP

BASE COLOR

- Surf
- Antique White

ACCENT COLORS

Meridian Series - See brochure for standard options.
Signature Series - Specify color required.

COUNTER TOP COLORS

Solid Surface

Meridian Series - See brochure for standard options.
Signature Series - See brochure for standard options, or specify color required.

Plastic Laminate

Meridian Series - See brochure for standard options.
Signature Series - Specify color required.

Special order colors can be specified in Signature Series, upcharge may apply.

SPECIAL COLOR INFORMATION

Other solid surface colors and laminates from Wilsonart, Formica, Nevamar and Pionite are available, subject to an additional charge, per color, per order. Color sample chips and other information is available on the internet and at local dealers specializing in these materials.

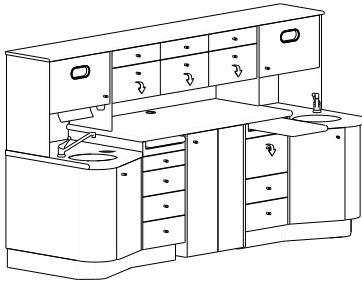
REAR SUPPORT PEX

ORDER CHECKLIST

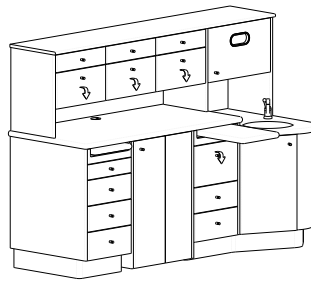
BowWood
cabinet systems

PLEASE MARK AN "X" CLEARLY IN THE APPROPRIATE BOXES

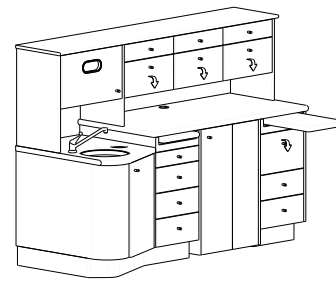
1 STANDARD CONFIGURATIONS



☐ RS2 PEX



☐ RS1 PEX-R



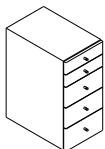
☐ RS1 PEX-L

Countertop: ☐ Solid Surface ☐ Laminate

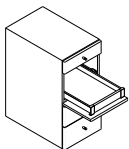
\$ _____

2 BANK OPTIONS

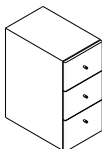
See page '7' for drawer bank pricing



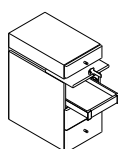
DR



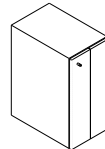
AST



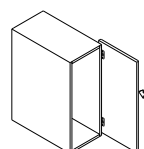
EQ



FP



BI



PS

Dr's Side: DR AST EQ FP BI PS

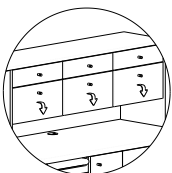
Asst's Side: DR AST EQ FP BI PS

(Circle One)

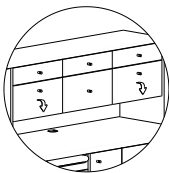
\$ _____

3 HUTCH OPTIONS

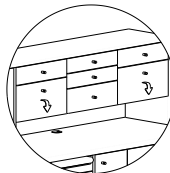
Any hutch bank can be exchanged with those shown below at no extra cost.



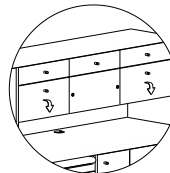
(1) 1 Drawer,
1 Storage



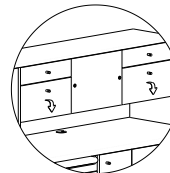
(2) 2 Drawers



(3) 3 Drawers



(4) 1 Drawer,
1 Accessory
Panel



(5) Full Accessory
Panel

Place the hutch number in the respective blank:

Left _____

Middle _____

Right _____

4 OPTIONS & ACCESSORIES

- Hardware: ☐ Knob ☐ Bow-Pull
- Task Light: ☐ No ☐ Yes
- Extra Glove Dispensers: ☐ No ☐ Yes (Qty: _____)
- Soap Pump: ☐ No ☐ Yes
- Digital Timer Clock: ☐ No ☐ Yes
- Foot Activated Faucet: ☐ No ☐ Yes
- Monitor Arm: ☐ No ☐ Yes (w/ KEY TRAY ☐)
- DCI Water Bottle Kit: ☐ No ☐ Yes
- Quick Connect: ☐ No ☐ Single ☐ Dual

Additional Options / Notes: _____

5 COLORS

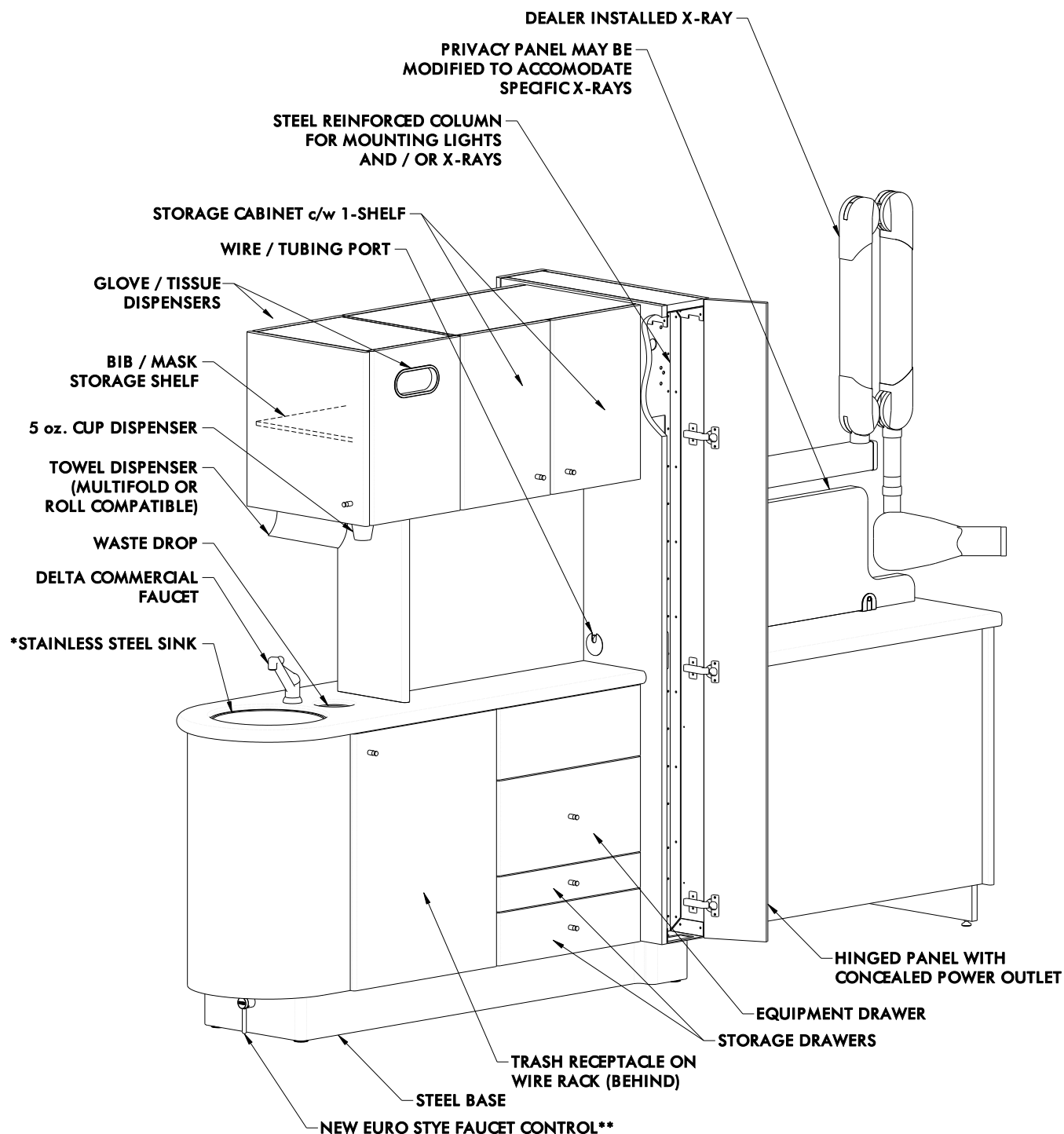
Base Color: ☐ Surf ☐ Antique White

Countertop Color: _____

Accent Color: _____

(Colors chosen other than Bow Wood Select may be subject to an upcharge):

Doctor's Name: _____ Approved By: _____ Number of Units: _____

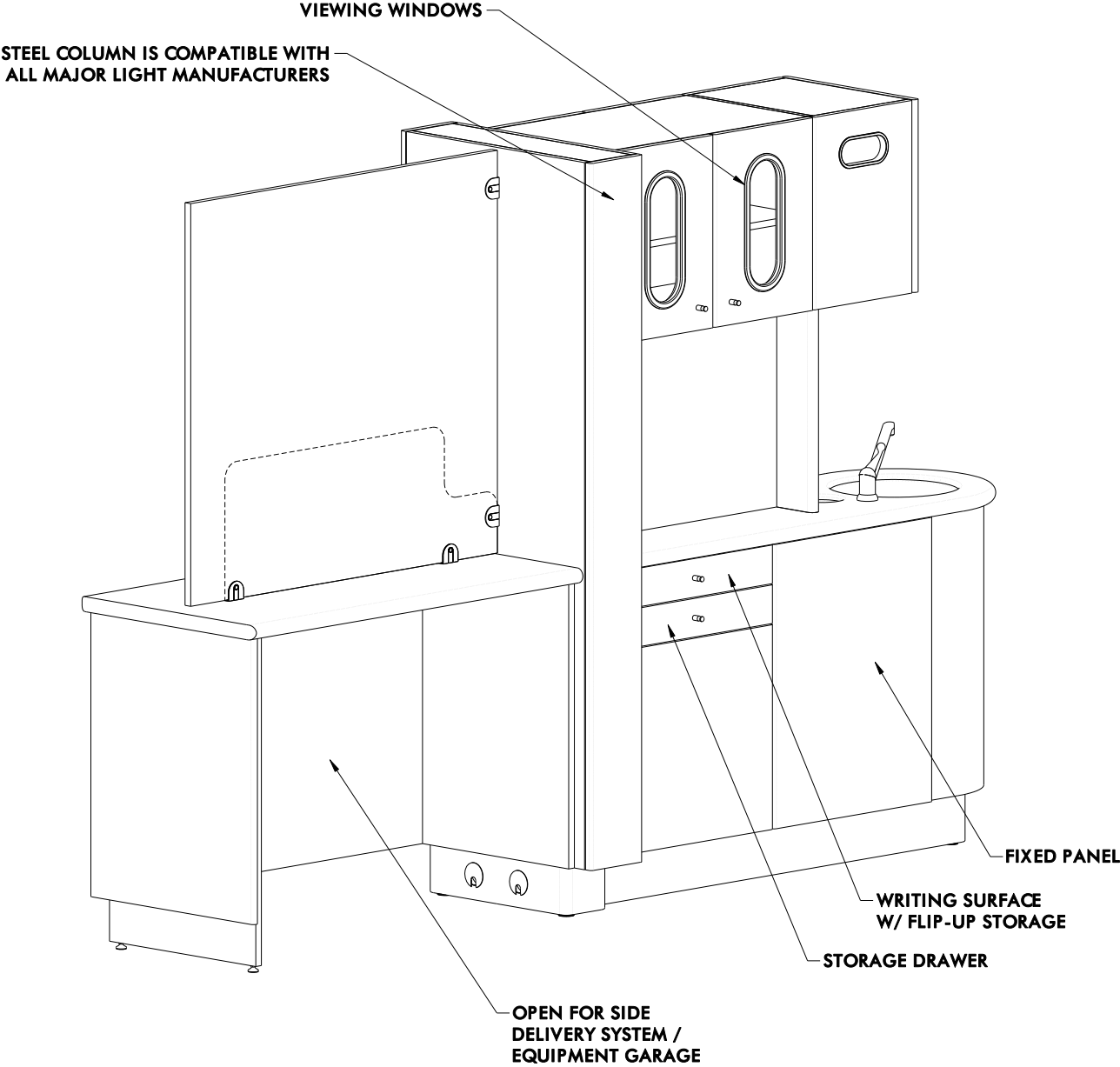


CIR
ASSISTANT'S SIDE

*Sink under mounted when ordered w/ Solid Surface countertop.

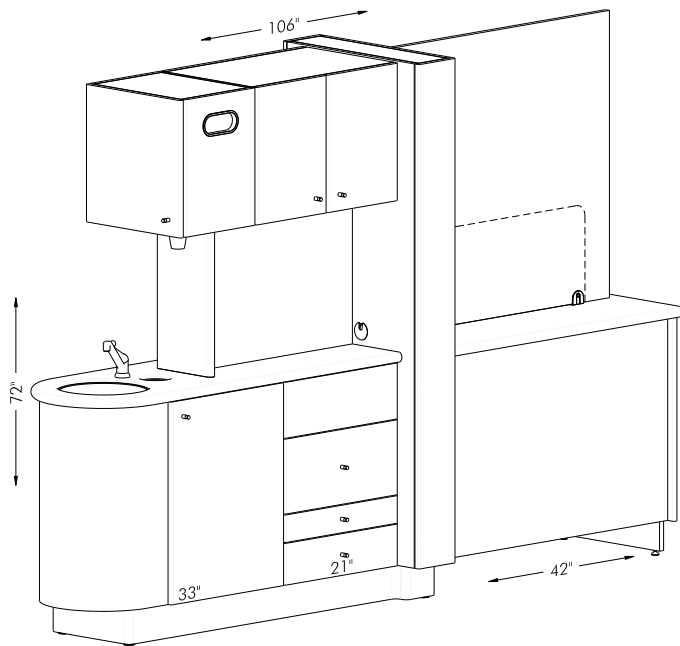
**Also available as dual.

Some features shown are optional extras.

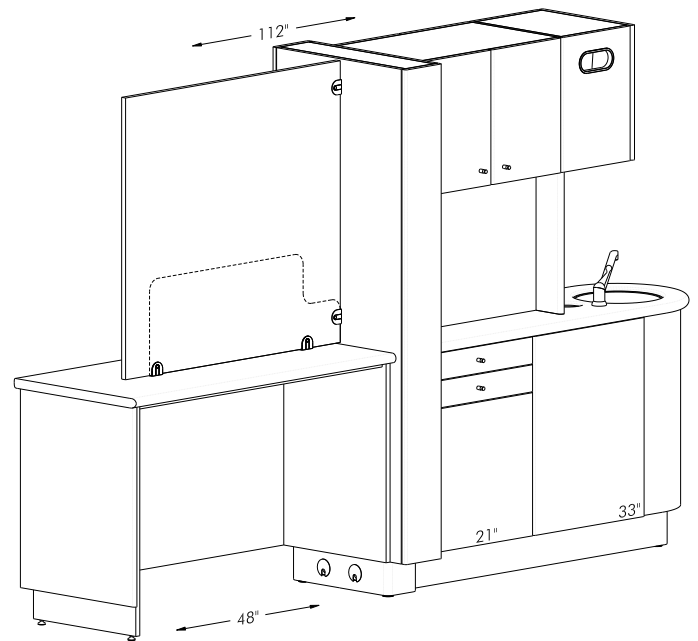


CIR
DOCTOR'S SIDE

Some features shown are optional extras.

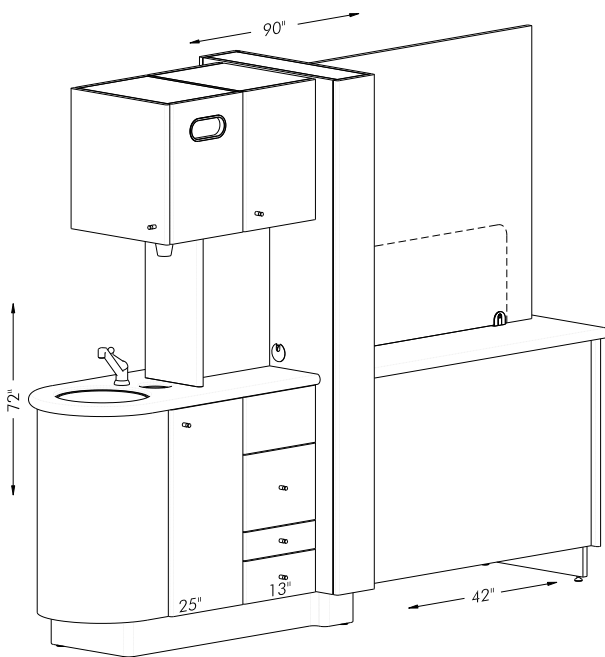


ASSISTANT'S SIDE

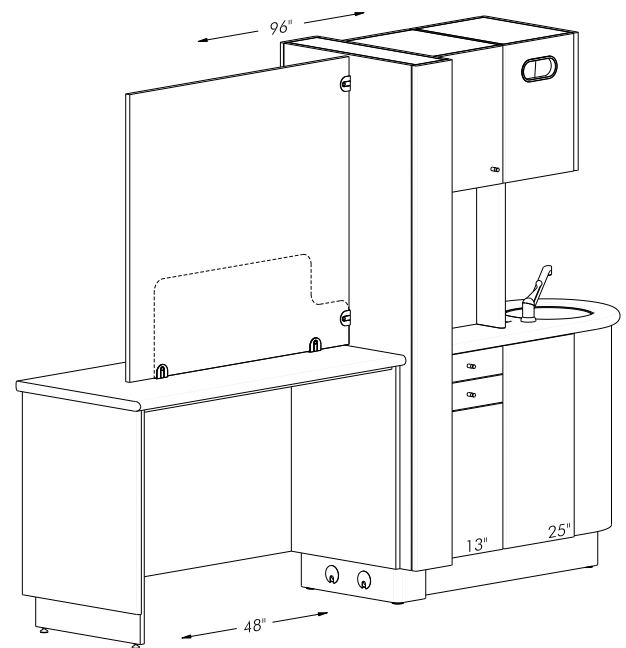


DOCTOR'S SIDE

CIR

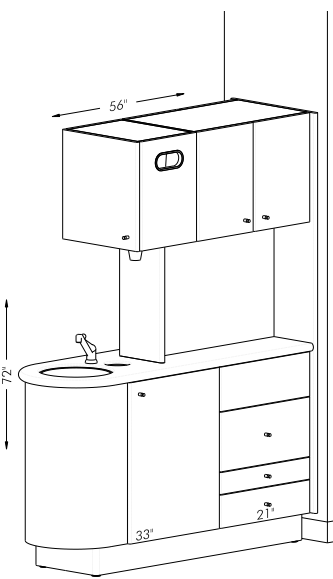


ASSISTANT'S SIDE

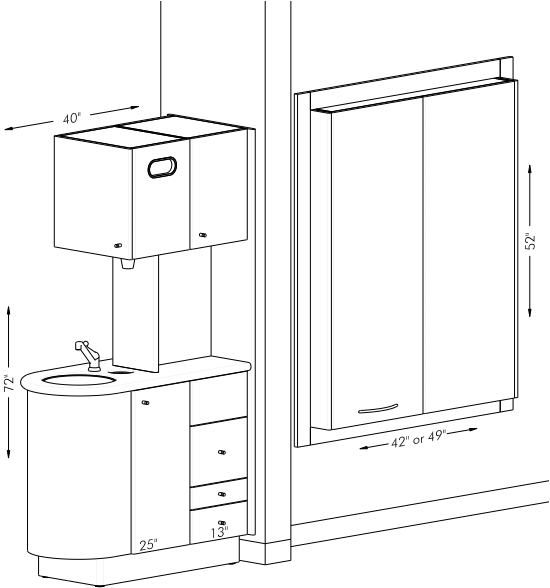


DOCTOR'S SIDE

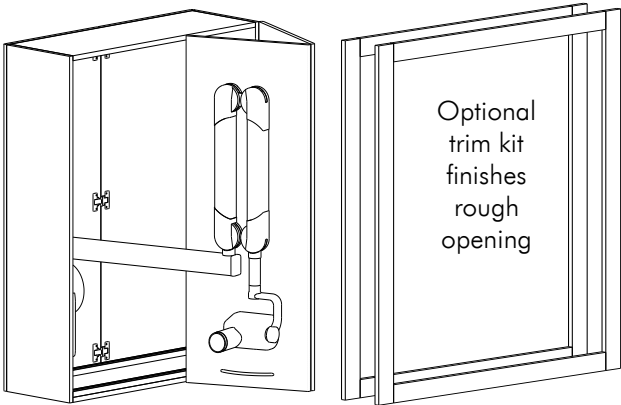
CIRS



CIR H

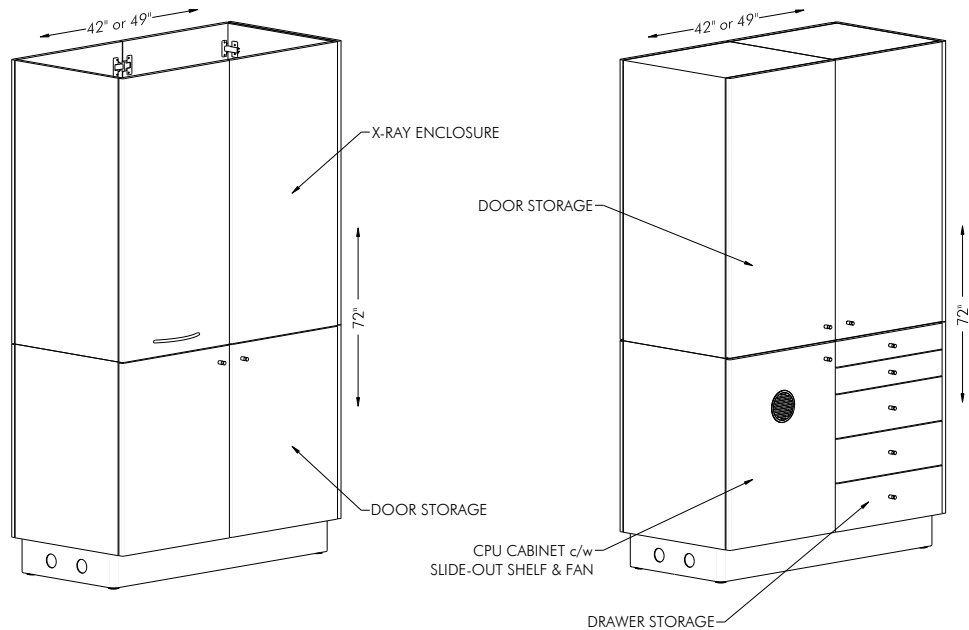


CIRS H

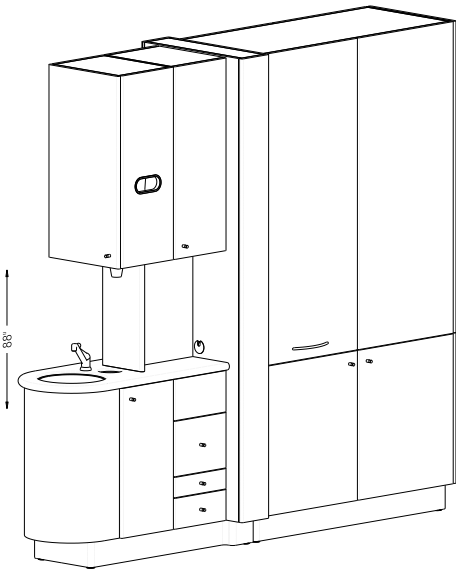


X-RAY PASS THRU

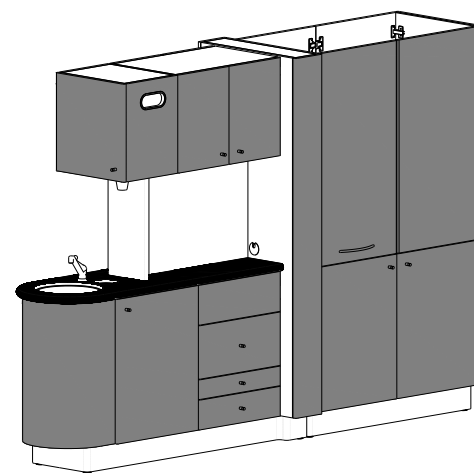
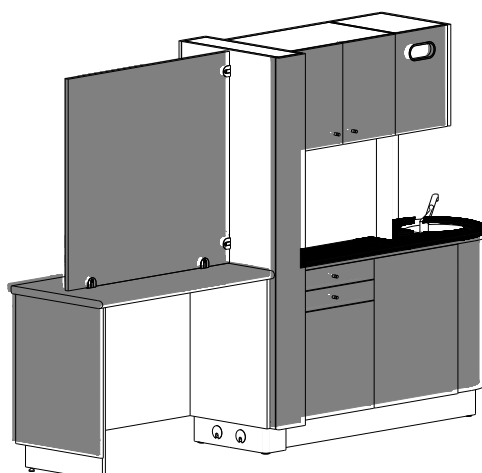
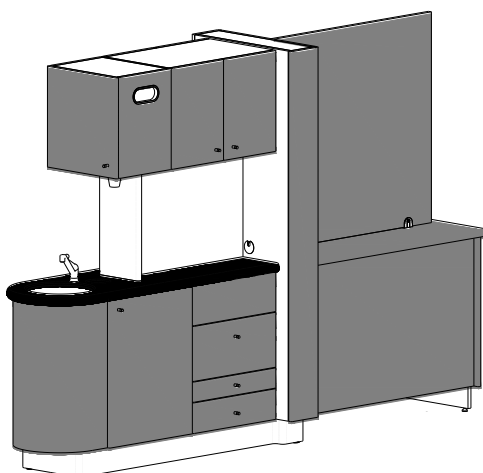
OPTIONAL CONFIGURATIONS



END OPTION ADDITIONS



TALL OPTION ADDITIONS



□ = BASE COLOR

■ = ACCENT

■ = COUNTER TOP

BASE COLOR

- Surf
- Antique White

COUNTER TOP COLORS

Solid Surface

Meridian Series - See brochure for standard options.

Signature Series - See brochure for standard options, or specify color required.

Plastic Laminate

Meridian Series - See brochure for standard options.

Signature Series - Specify color required.

ACCENT / FINISHED BACK COLORS

Meridian Series - See brochure for standard options.

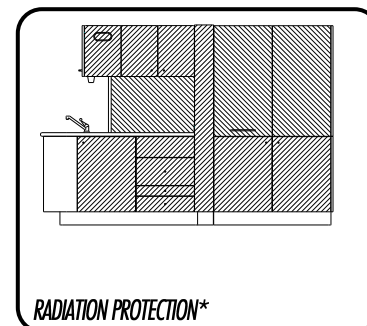
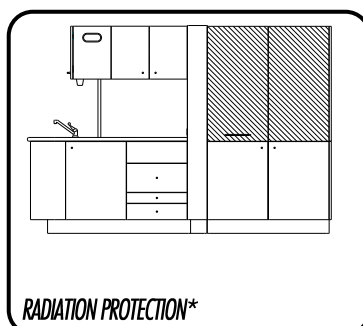
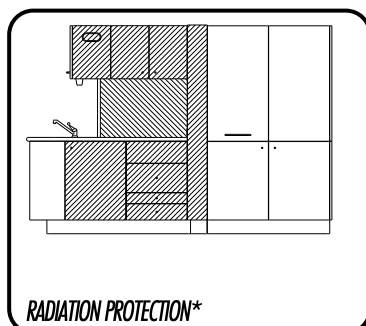
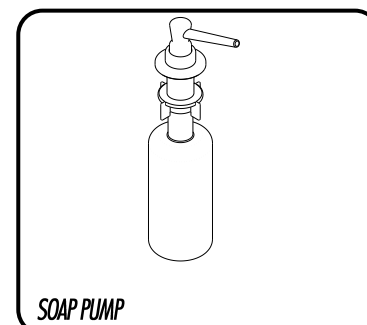
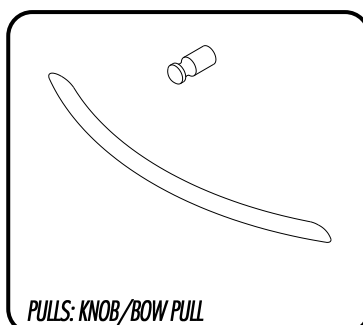
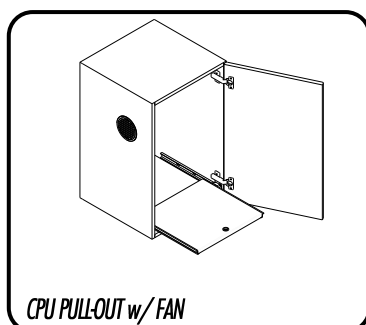
Signature Series - Specify color required.

Special order colors can be specified in Signature Series, upcharge may apply.

SPECIAL COLOR INFORMATION

Other solid surface colors and laminates from Wilsonart, Formica, Nevamar and Pionite are available, subject to an additional charge, per color, per order. Color sample chips and other information is available on the internet and at local dealers specializing in these materials.

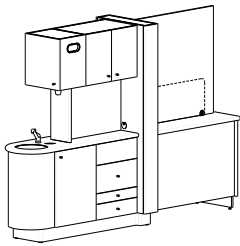
OPTIONS & ACCESSORIES



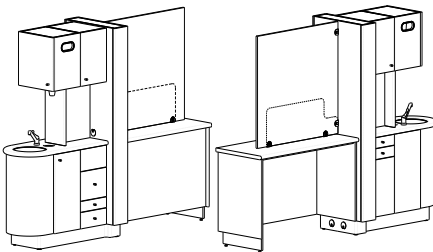
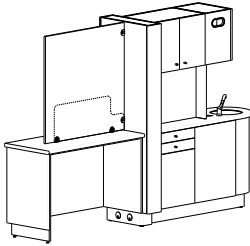
*1/64" LEAD IN AREA SHOWN. BOW WOOD ACCEPTS NO RESPONSIBILITY FOR COMPLIANCE WITH YOUR LOCAL RADIATION PROTECTION LAWS. CHECK WITH YOUR GOVERNING BODY TO ASSURE COMPLIANCE.

PLEASE MARK AN "X" CLEARLY IN THE APPROPRIATE BOXES

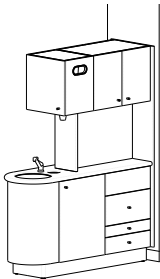
1 STANDARD CONFIGURATIONS



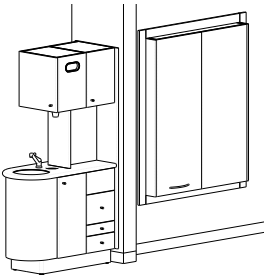
☐ CIR



☐ CIRS



☐ CIR H



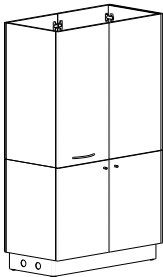
☐ CIRS H

☐ XPT

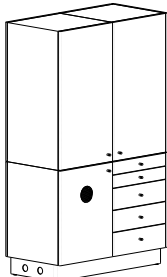
CIR: ☐ 106" ☐ 112" CIRS: ☐ 90" ☐ 96" PT: ☐ 42" ☐ 49"

Countertop: ☐ Solid Surface ☐ Laminate

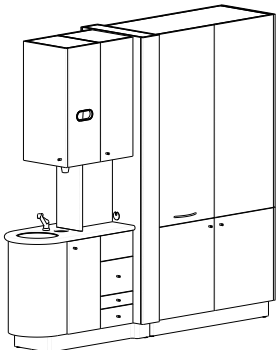
2 OPTIONAL CONFIGURATIONS



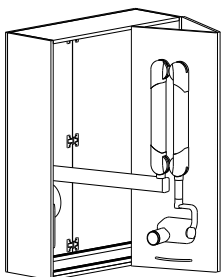
☐ X-ray Enclosure
☐ Base Storage



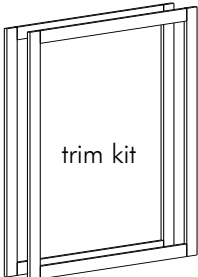
☐ Upper Storage
☐ Drawer Storage
☐ CPU Cabinet



☐ Tall CIR ☐ Tall CIRS
☐ Tall X-ray Enclosure
☐ Tall Upper Storage



☐ w/ Lead Lining
☐ Trim Kit



3 OPTIONS & ACCESSORIES

Hardware: ☐ Knob ☐ Bow-Pull
Oval Windows: ☐ No ☐ Yes (Qty: _____)
Extra Glove Dispensers: ☐ No ☐ Yes (Qty: _____)
Soap Pump: ☐ No ☐ Yes
Foot Activated Faucet: ☐ No ☐ Yes
Dual Foot Activated Faucet: ☐ No ☐ Yes
R.P. - Sink End: ☐ No ☐ Yes
R.P. - X-ray Enclosure: ☐ No ☐ Yes
R.P. - Full Island: ☐ No ☐ Yes

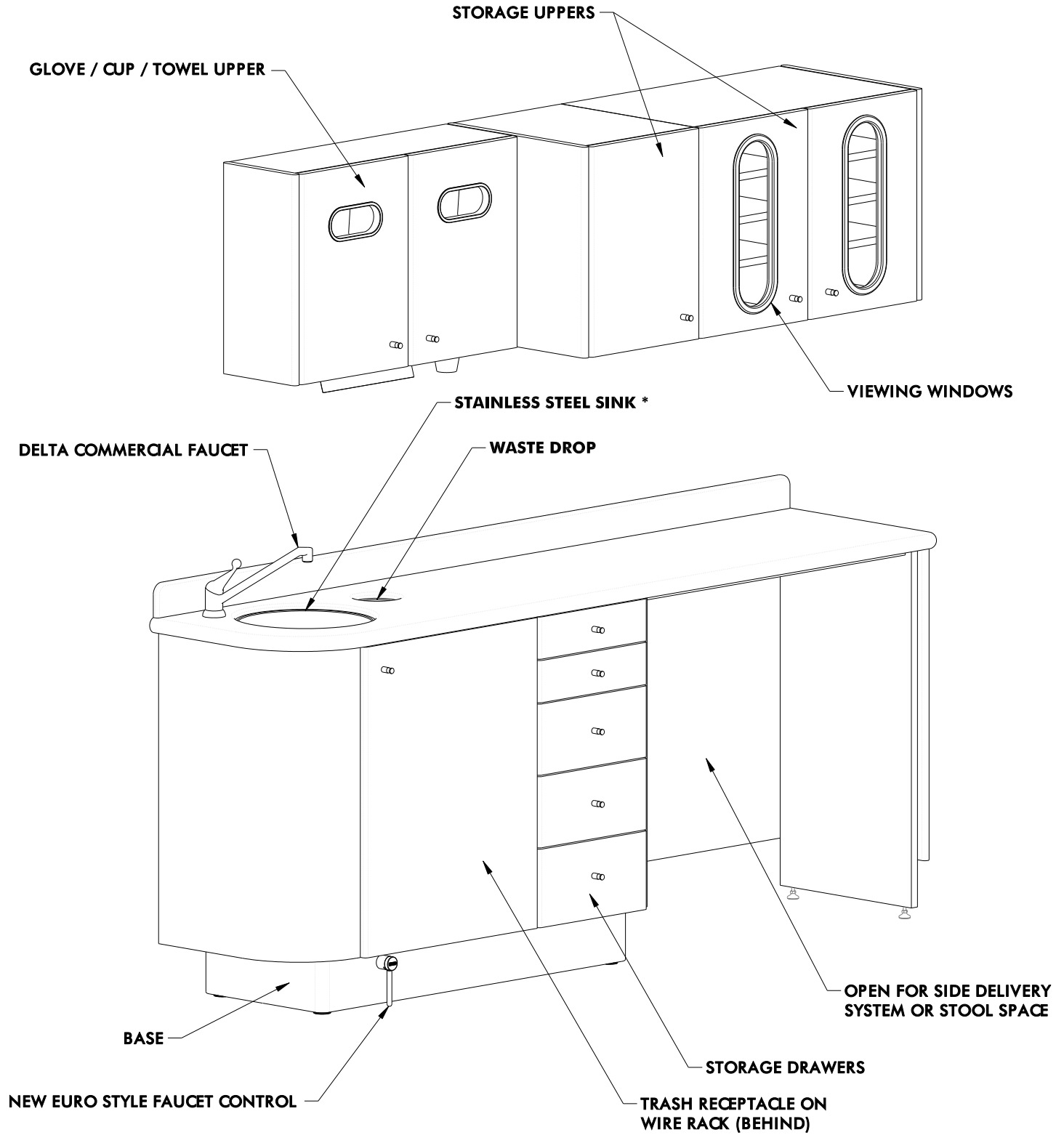
Additional Options / Notes: _____

To Fit Lights: ☐ No ☐ Yes Make: _____ Model: _____
To Fit X-ray: ☐ No ☐ Yes Make: _____ Model: _____

4 COLORS

Base Color: ☐ Surf ☐ Antique White Countertop Color: _____
Accent Color: _____ (Colors chosen other than Bow Wood Select may be subject to an upcharge)

Doctor's Name: _____ Approved By: _____ Number of Units: _____



DRSL

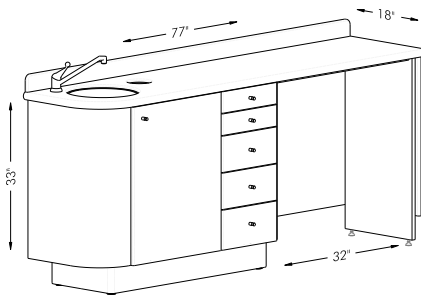
*Sink under mounted when ordered w/ Solid Surface countertop.

Some features shown are optional extras.

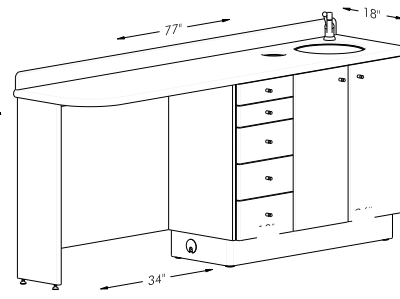
SIDE CABINETS

STANDARD CONFIGURATIONS

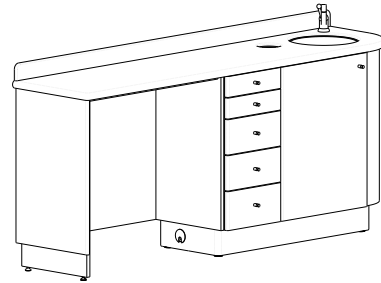
Bow Wood
cabinet systems



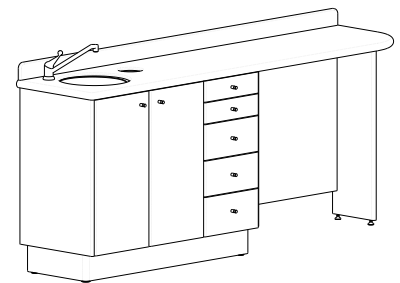
DRSL



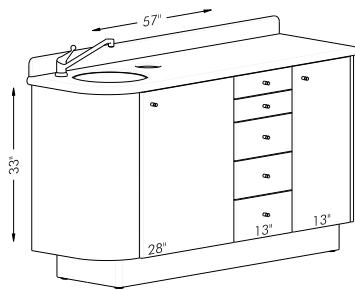
DRSL-T



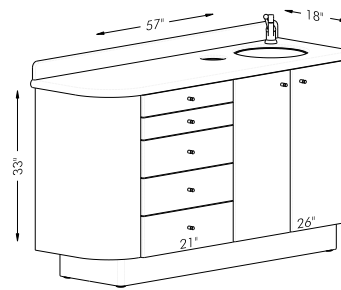
DRSR



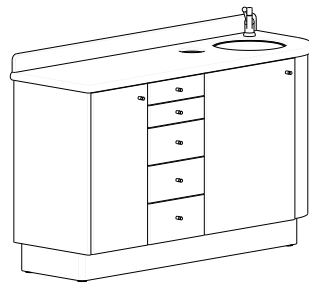
DRSR-T



ASTL



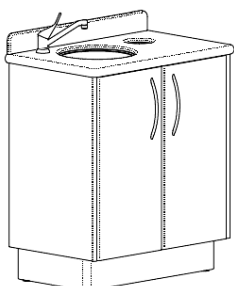
ASTL-T



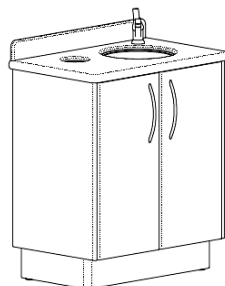
ASTR



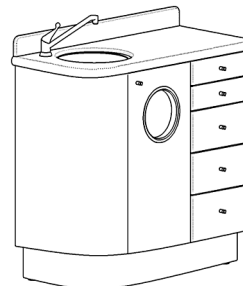
ASTR-T



WSL



WSR



WSLD

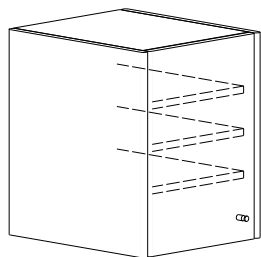


WSRD

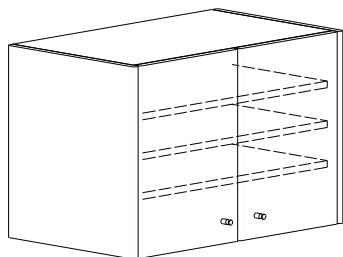
SIDE CABINETS

STANDARD CONFIGURATIONS

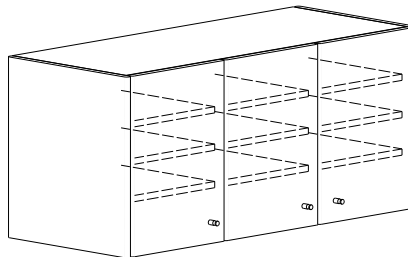
BowWood
cabinet systems



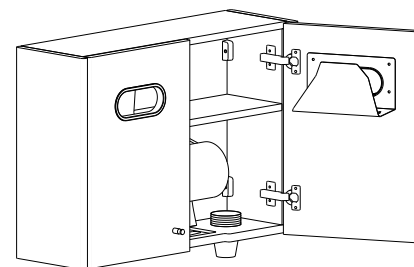
STU-1



STU-2



STU-3

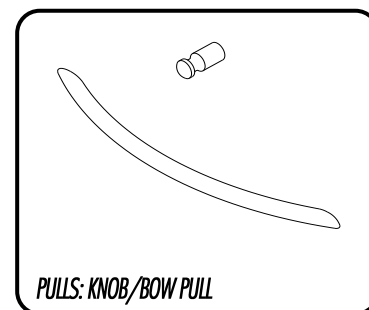
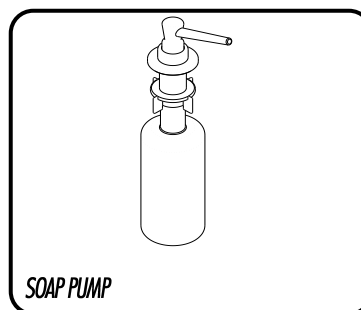
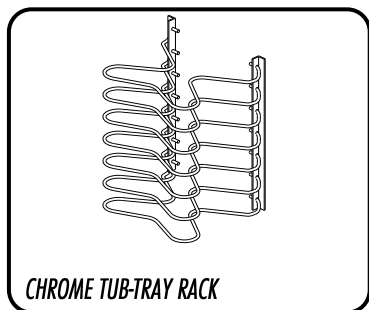
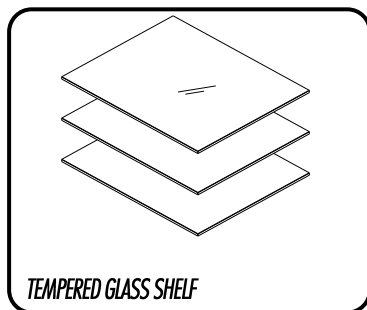
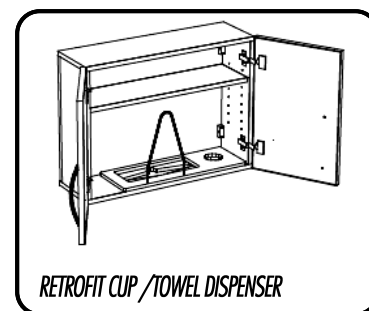
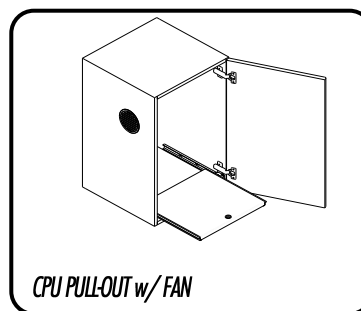
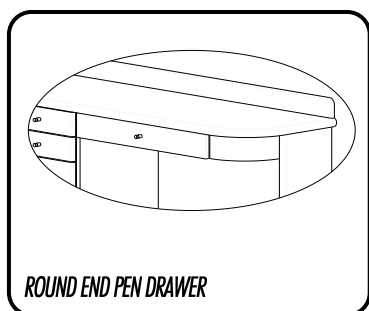
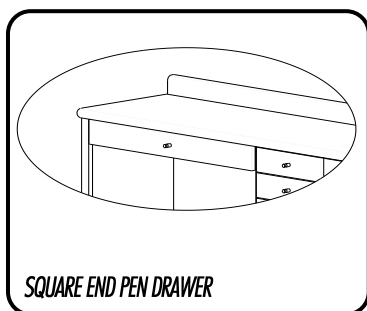


GCT

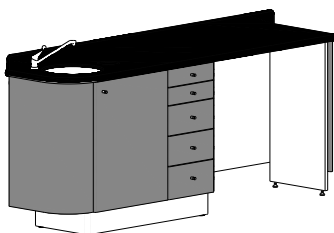
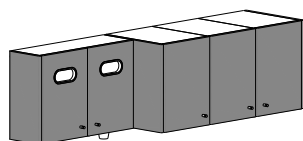
STU-1 13" Double Door \$369.00
STU-2 26" Double Door \$473.00
STU-3 40" Triple Door \$836.00

GCT 26" Double Door \$611.00

OPTIONS & ACCESSORIES



COLOR LOCATIONS



□ = BASE COLOR

■ = ACCENT

■ = COUNTER TOP

BASE COLOR

- Surf
- Antique White

ACCENT COLORS

Meridian Series - See brochure for standard options.
Signature Series - Specify color required.

COUNTER TOP COLORS

Solid Surface

Meridian Series - See brochure for standard options.
Signature Series - See brochure for standard options, or specify color required.

Plastic Laminate

Meridian Series - See brochure for standard options.
Signature Series - Specify color required.

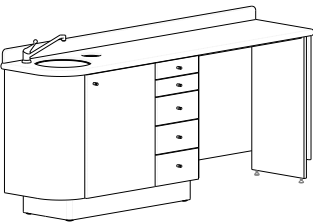
Special order colors can be specified in Signature Series, upcharge may apply.

SPECIAL COLOR INFORMATION

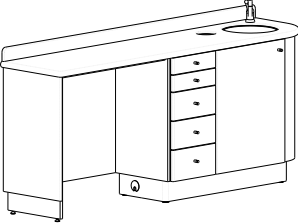
Other solid surface colors and laminates from Wilsonart, Formica, Nevamar and Pionite are available, subject to an additional charge, per color, per order. Color sample chips and other information is available on the internet and at local dealers specializing in these materials.

PLEASE MARK AN "X" CLEARLY IN THE APPROPRIATE BOXES

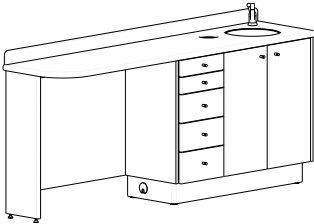
1 STANDARD CONFIGURATIONS



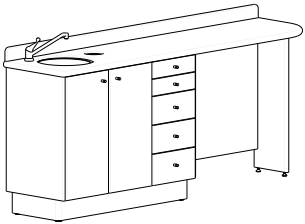
☐ DRSL



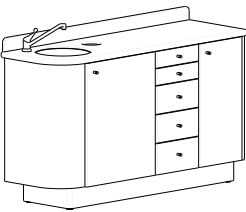
☐ DRSR



☐ DRSL-T



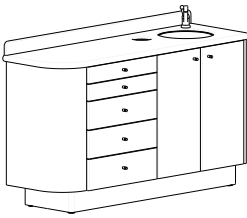
☐ DRSR-T



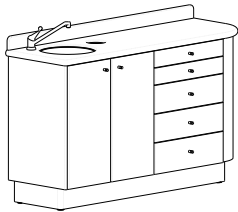
☐ ASTL



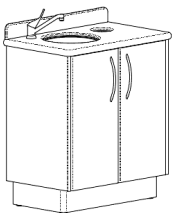
☐ ASTR



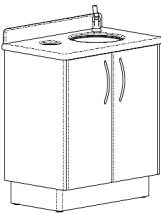
☐ ASTL-T



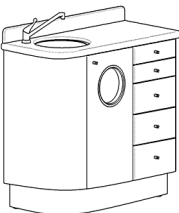
☐ ASTR-T



☐ WSL



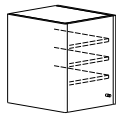
☐ WSR



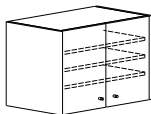
☐ WSLD



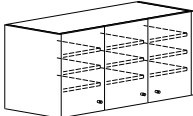
☐ WSRD



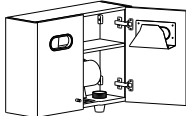
☐ STU-1



☐ STU-2



☐ STU-3



☐ GCT

Countertop: ☐ Solid Surface ☐ Laminate

\$ _____

2 OPTIONS & ACCESSORIES

- Hardware: ☐ Knob ☐ Bow-Pull
Oval Windows: ☐ No ☐ Yes (Qty: _____)
Tempered Glass Shelves: ☐ No ☐ Yes (Qty-pkg of 3: _____)
Chrome Tub/Tray Racks: ☐ No ☐ Yes
Soap Pump: ☐ No ☐ Yes
Foot Activated Faucet: ☐ No ☐ Yes
Square End Pen Drawer: ☐ No ☐ Yes
Round End Pen Drawer: ☐ No ☐ Yes
CPU Pull-out w/ Fan: ☐ No ☐ Single ☐ Dual

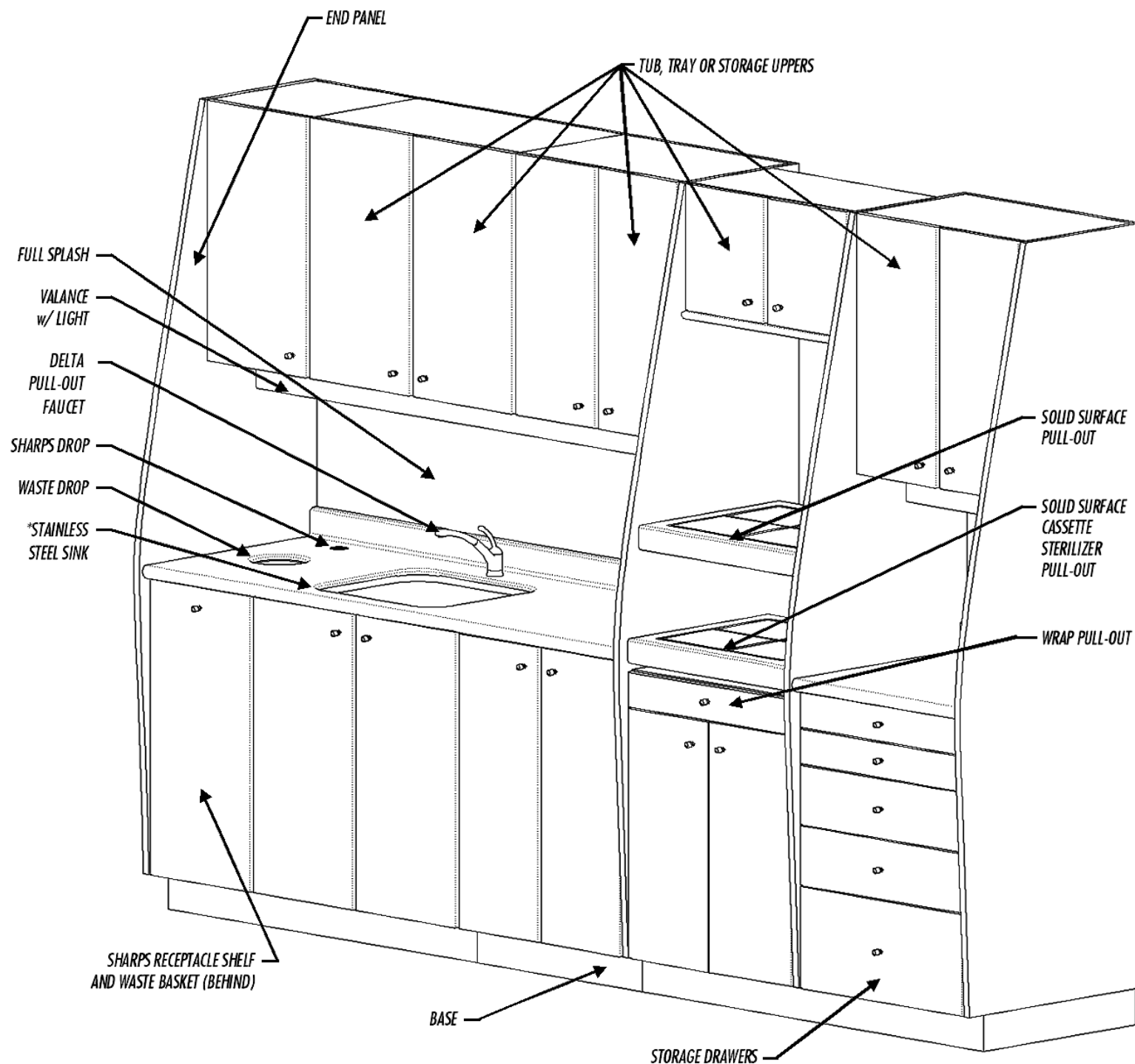
Additional Options / Notes: _____

3 COLORS

Base Color: ☐ Surf ☐ Antique White
Accent Color: _____

Countertop Color: _____
(Colors chosen other than Bow Wood Select may be subject to an upcharge)

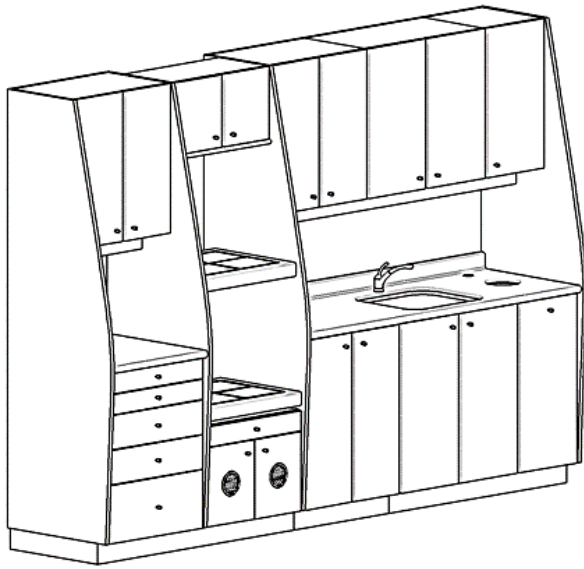
Doctor's Name: _____ Approved By: _____ Number of Units: _____



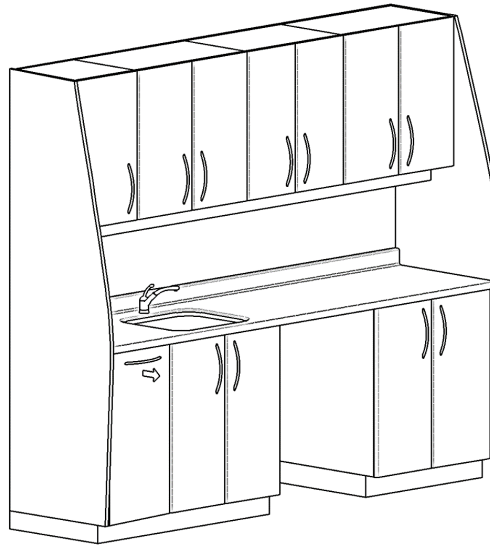
SC

*Sink under mounted when ordered w/ Solid Surface countertop.

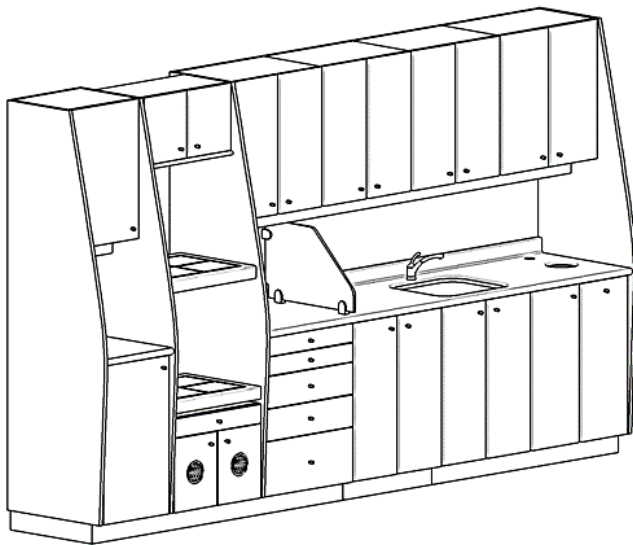
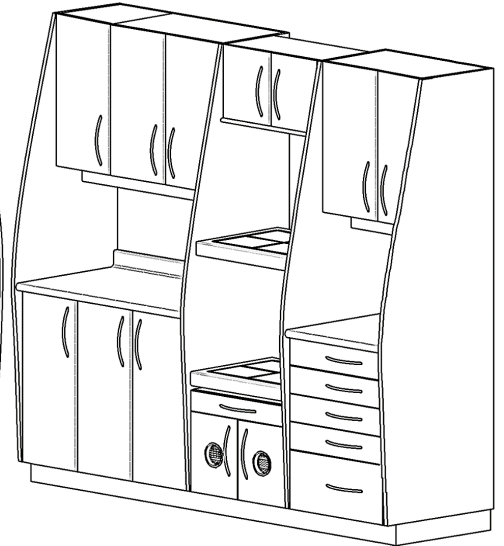
**Two sterilizer tower option available



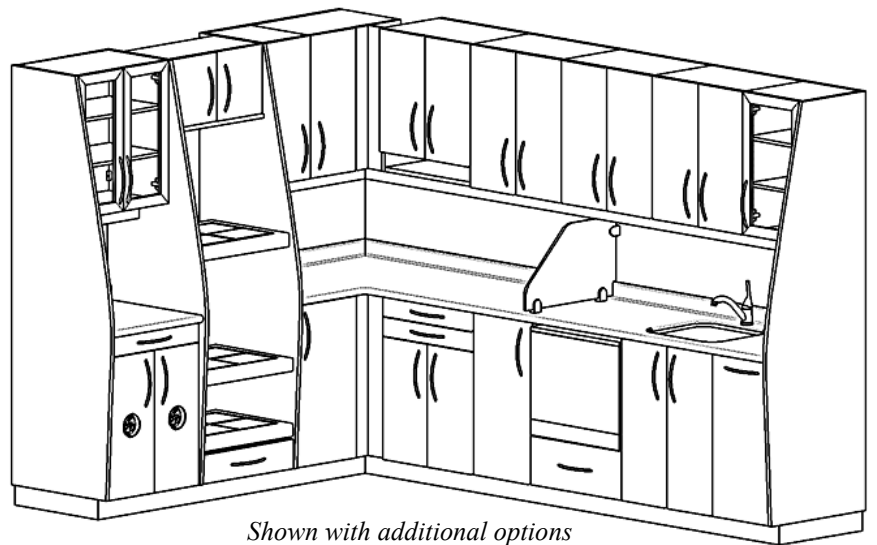
SC10 - 10' Steri



SC-GS - Galley Style 8'x8'



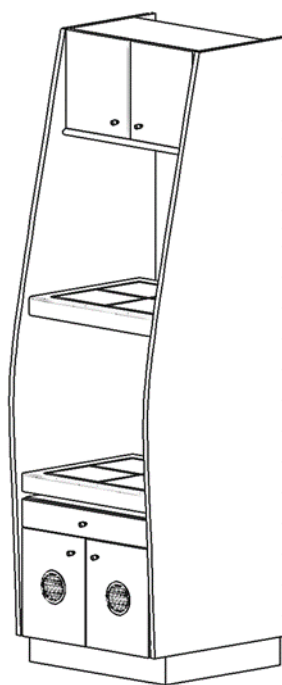
SC12 - 12' Steri



Shown with additional options

SC-L-S - L-Shaped Steri 10'x8'

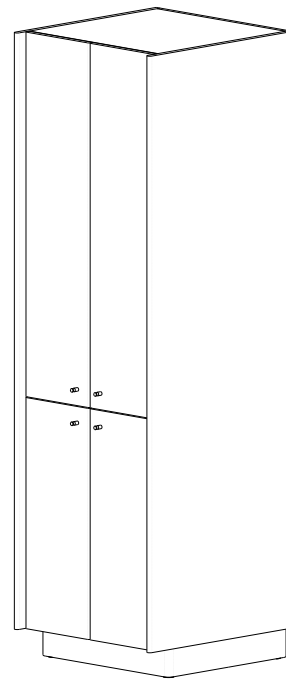
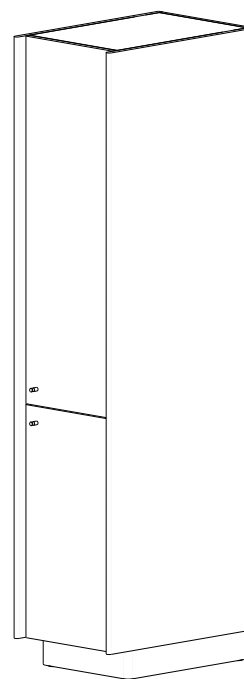
Sterilization Cabinets may be reversed left to right at no charge



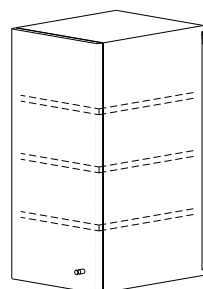
TOWER



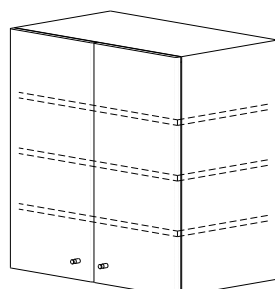
END PANEL



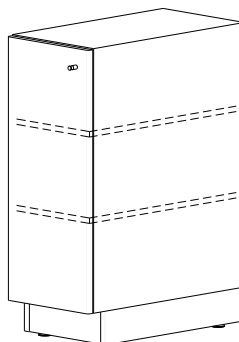
PANTRY MODULES
18" - 26"



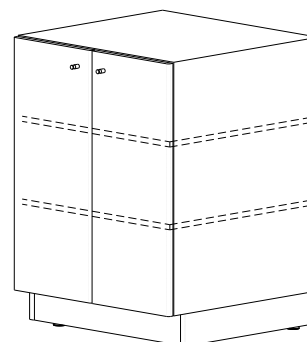
SINGLE DOOR UPPER
12" - 13" - 16" - 20"



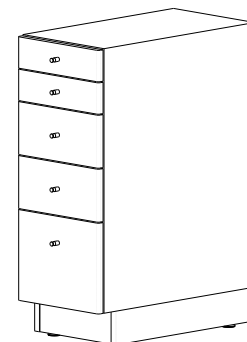
DOUBLE DOOR UPPER
24" - 26" - 28" - 32"



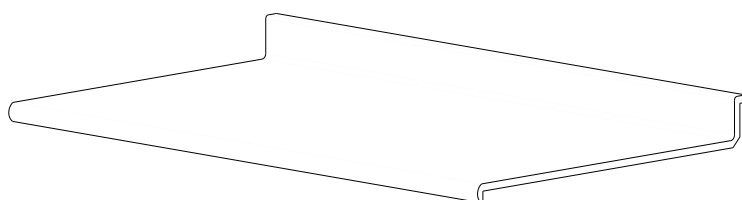
SINGLE DOOR BASE
12" - 13" - 16" - 20"



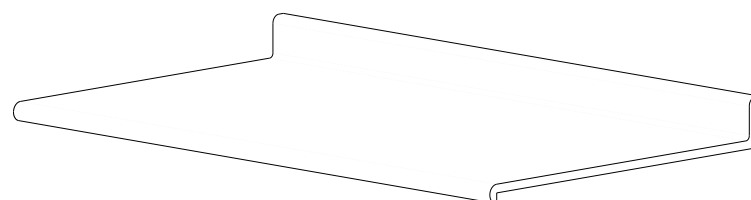
DOUBLE DOOR BASE
24" - 26" - 28" - 32"



DRAWER BANK
12" - 13" - 16" - 20"

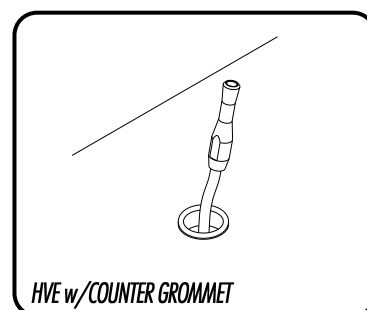
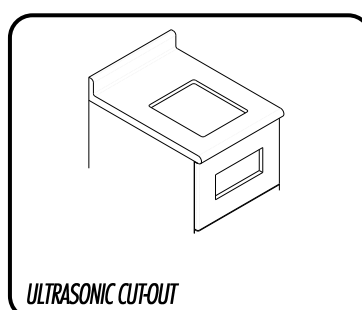
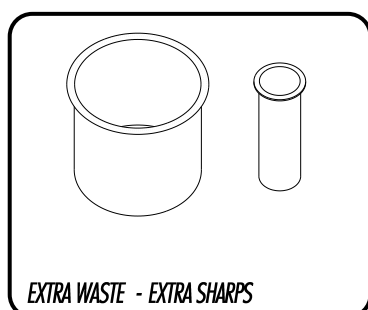
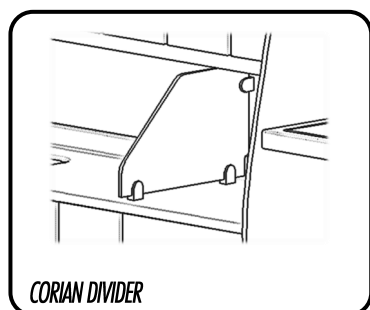
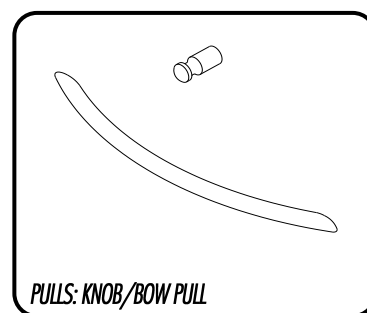
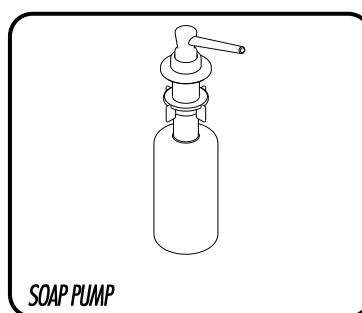
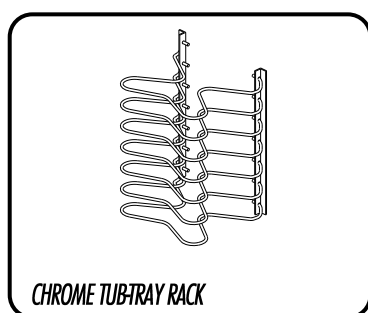
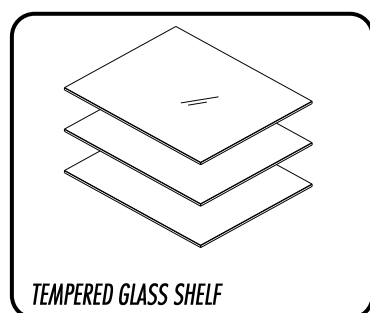
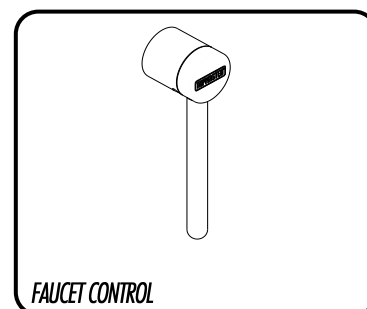
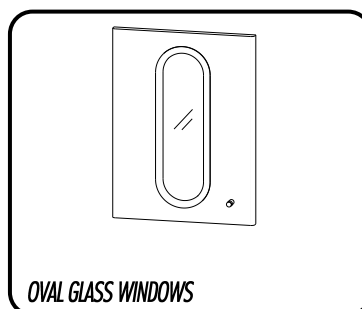
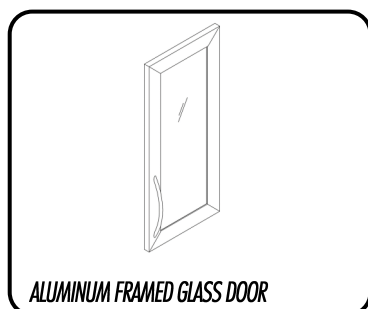
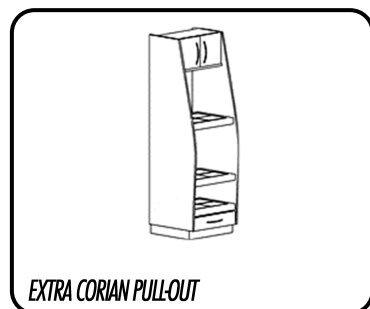


SOLID SURFACE COUNTER
COVED SPLASH
SVELTE PROFILE SOLID SURFACE



LAMINATE COUNTER

Consult your local Bow Wood representative for custom set-ups.

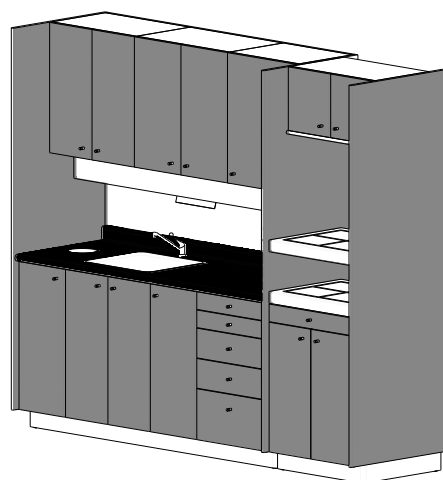


COLOR LOCATIONS

□ = BASE COLOR

■ = ACCENT

■ = COUNTER TOP



BASE COLOR

- Surf
- Antique White

ACCENT COLORS

Meridian Series - See brochure for standard options.
Signature Series - Specify color required.

COUNTER TOP COLORS

Solid Surface

Meridian Series - See brochure for standard options.
Signature Series - See brochure for standard options, or specify color required.

Plastic Laminate

Meridian Series - See brochure for standard options.
Signature Series - Specify color required.

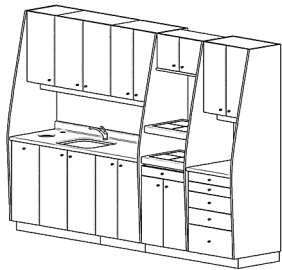
Special order colors can be specified in Signature Series, upcharge may apply.

SPECIAL COLOR INFORMATION

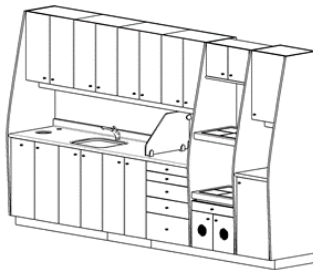
Other solid surface colors and laminates from Wilsonart, Formica, Nevamar and Pionite are available, subject to an additional charge, per color, per order. Color sample chips and other information is available on the internet and at local dealers specializing in these materials.

PLEASE MARK AN "X" CLEARLY IN THE APPROPRIATE BOXES

1 STANDARD CONFIGURATIONS



☐ SC10



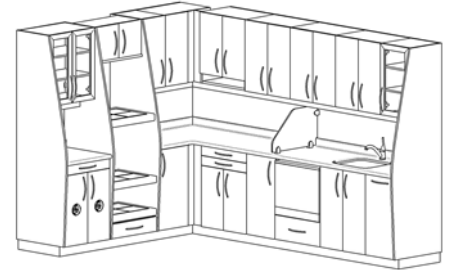
☐ SC12



☐ SC-6S



☐ SC-LS



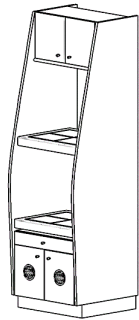
Reverse from left to right: ☐ Yes ☐ No

Countertop: ☐ Solid Surface ☐ Laminate

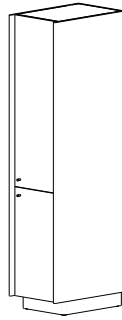
2 OPTIONAL CONFIGURATIONS



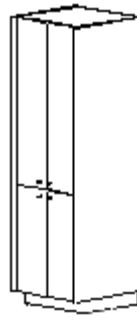
☐ SCS TOWER
☐ SCT TOWER



☐ CURVED PANEL



☐ 18" PANTRY
☐ 26" PANTRY



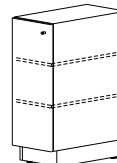
Consult your representative for design assistance

- ☐ 12"
- ☐ 13"
- ☐ 16"
- ☐ 20"



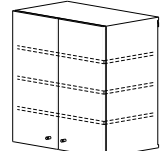
SINGLE DOOR UPPER

- ☐ 12"
- ☐ 13"
- ☐ 16"
- ☐ 20"



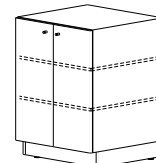
SINGLE DOOR BASE

- ☐ 24"
- ☐ 26"
- ☐ 28"
- ☐ 32"



DOUBLE DOOR UPPER

- ☐ 24"
- ☐ 26"
- ☐ 28"
- ☐ 32"



DOUBLE DOOR BASE

- ☐ 12"
- ☐ 13"
- ☐ 16"
- ☐ 20"



DRAWER BANK

Countertop: ☐ Solid Surface ☐ Laminate

3 OPTIONS & ACCESSORIES

Hardware:

☐ Knob ☐ Bow-Pull

Extra Corian Pull-out

☐ No ☐ Yes

Red Display Light:

☐ No ☐ Yes (Qty: _____)

Blue Display Light:

☐ No ☐ Yes (Qty: _____)

Oval Windows:

☐ No ☐ Yes (Qty: _____)

Foot Activated Faucet:

☐ No ☐ Yes

Tempered Glass Shelves

☐ No ☐ Yes (Qty-pkg of 3: _____)

Chrome Tub/Tray Racks:

☐ No ☐ Yes

Soap Pump:

☐ No ☐ Yes

Above Counter Corian Divider:

☐ No ☐ Yes

Extra Waste Drop:

☐ No ☐ Yes (w/ KEY TRAY ☐)

Extra Sharps Drop:

☐ No ☐ Yes

Ultrasonic Cutout:

☐ No ☐ Single ☐ Dual

HVE w/Counter Grommet

☐ No ☐ Yes

Additional Options / Notes:

4 COLORS

Base Color: ☐ Surf ☐ Antique White

Countertop Color: _____

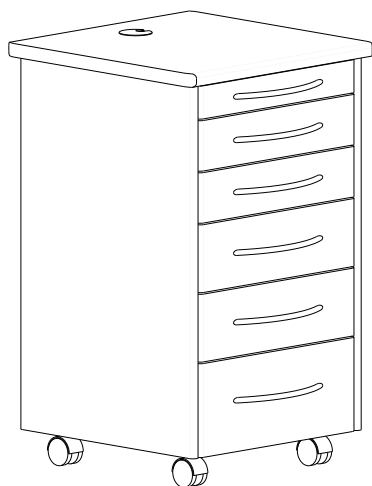
Accent Color: _____

(Colors chosen other than Bow Wood Select may be subject to an upcharge)

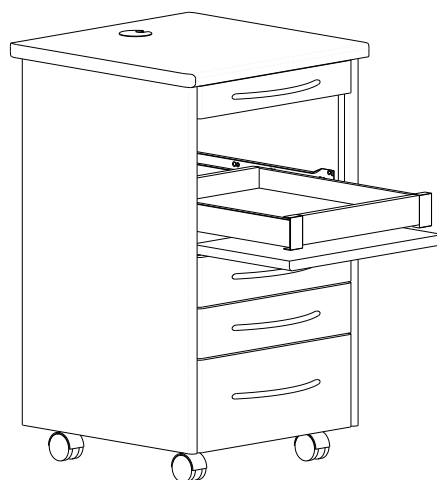
Doctor's Name: _____

Approved By: _____

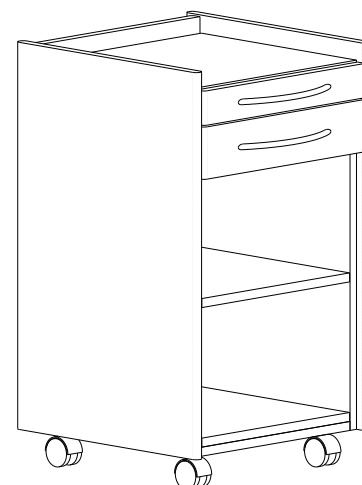
Number of Units: _____



DOCTOR'S
16" - 18"



ASSISTANT'S
16" - 18"

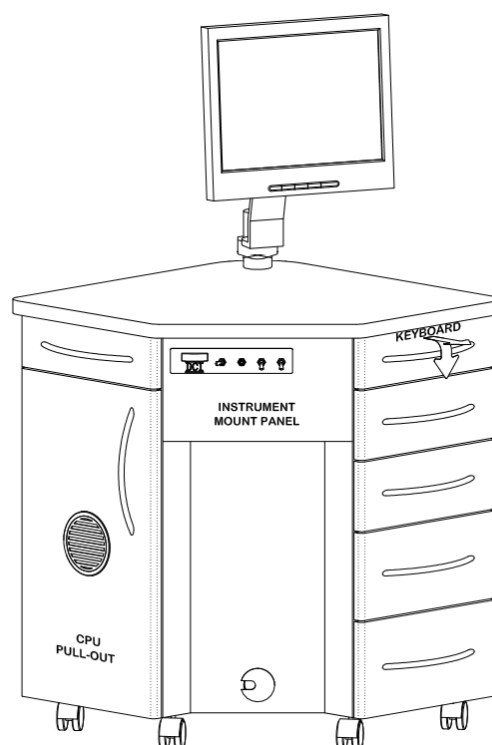


UTILITY
16" - 18"

*Base colors only. Accent colors may be specified subject to an upcharge.



MCI
19"



MCO
24"

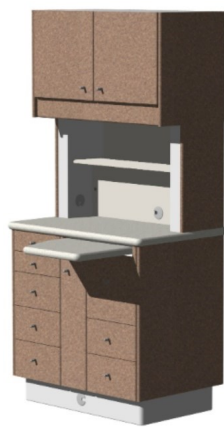
*Base colors only. Accent colors may be specified subject to an upcharge.

Color Location Guide

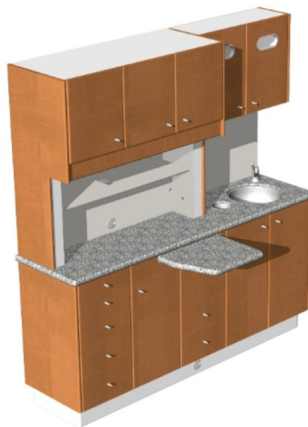
Rear Support



RS



RS12



RS1



RS2

Centre Islands

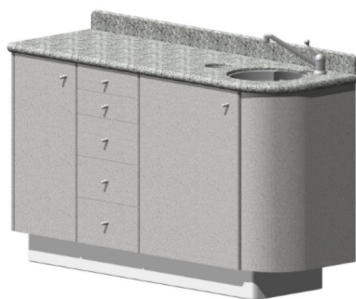


CIRS



CIR

End Cabinets



ASTR

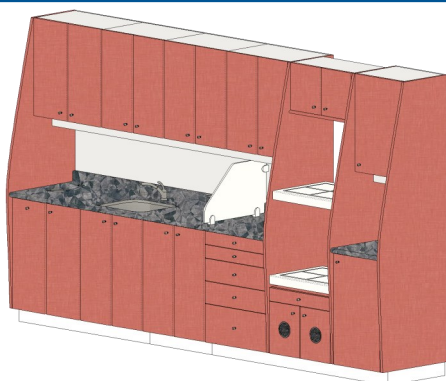


WS



DRSR-T

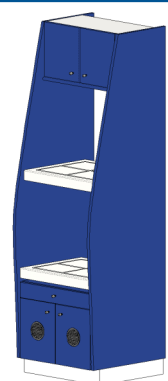
Sterilization



SC12



SCT-Standard



SCT-w/Fan



*Beautiful eye-catching
style to enhance your image*

Bow Wood Values

Integrity

Fairness, honesty and trustworthiness.

Commitment

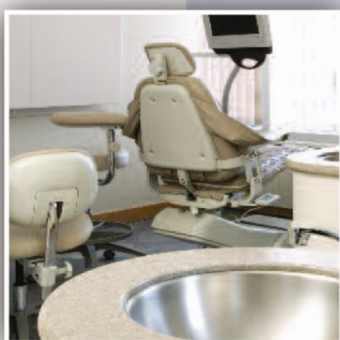
We treat each project as our own

Teamwork

Together we can achieve more.

Continuous Improvement

Continual learning underscores
continual improvement.



BowWood
cabinet systems

Bow Wood Inc.

410 Railway Avenue, Oxbow, SK, S0C 2B0

Tel: 1-888-269-9663 • Fax: 1-306-483-2102

E-mail: design@bowwood.net • Website: www.bowwood.net

Printed in Canada

Designed to fit. Built to perform.