



# Dental Water & Air Purification Catalog

## 2026

**OSO PURE**  
5175 W Phelps Road, Suite 1  
Glendale, AZ 85306

[sales@osopure.com](mailto:sales@osopure.com)  
1-800-OSO-PURE  
1-800-676-7873



# OSO Pure Company Profile

## Innovation, Reliability & Support

OSO Pure has been supplying and supporting dental water systems since 1998. Our primary goals are to

- create and supply innovative, reliable dental equipment at an affordable price,
- make ordering and installation seamless, and
- provide quick and reliable after-sale support.

Our Glendale Arizona company headquarters houses our showroom, manufacturing & warehouse facilities. We assemble & stock all our equipment and consumables for fast delivery anywhere in the United States.

Our outside field sales team supports you in ordering and installation of our equipment. Although installation of our equipment frequently involves a plumber, our field sales team and toll-free support are available for pre-installation walkthrough and onsite assistance when needed.

# Table of Contents

Company Profile .....	2
Table of Contents.....	3
Territory Managers, Warranty, Policies.....	4-5
<b>Water Purification Products</b>	
Water Product Selection Guide .....	6-7
SC-100 – water for autoclave, sterilizer, bottles & washer; up to 8 2L dental unit bottles.....	8
SC-400 – water for autoclave, sterilizer, bottles & washer; 8 - 38 2L dental unit bottles.....	10
SC-400 Duo – redundant water system for large clinic.....	12
MR10 / MR10E – UV-disinfected water for whole practice.....	14
ADG-3600D - for shocking city water dental units.....	16
<b>Air Purification Products</b>	
ADP-70 for in-office wall-mount.....	18
ADP-V Series for use with HVAC / ducts.....	20
Retail Price List.....	21
Water & Air System Interview.....	22
Dental Water System Competitive Analysis.....	back cover

# Territory Managers

Territory	Manager	Cellphone Number
National Sales Manager, CO, UT, KS, MO, NM, W-TX, WY, MT, NE, S IL	Jeffrey NeRoy	623-262-0246
S CA, AZ, Las Vegas, HI	Rick Wake Sheila Wake	Rick: 949-500-2619 Sheila: 949-500-0096
N CA, N NV	Max Murphy	510-326-8592
WA, OR, ID, AK	Paul Peterson	503-601-9330
MN, ND, SD, IA, WI except Milwaukee	Larry Wicks Ken Metcalf	Larry: 612-670-9590 Ken: 952-270-1436
MI, OH, IN, KY, W WV	Guy Gismondi	734-516-1597
N TX, OK, Shreveport LA	Rick Owens	405-664-8242
S TX	Kyle Toland	713-410-7111
AL, MS, TN, FL Panhandle, LA except Shreveport	Mike Harwood	205-492-2333
FL except Panhandle, Caribbean, Central America	Paulo Muller	954-839-7837
NC, SC, GA, E TN	Nathan Shaw	678-778-1295
DE, DC, MD, VA, E WV	Steve Marshall Linda Marshall	Steve: 410-459-1240 Linda: 410-459-1106
NYC, Long Island NY, Westchester County NY, NJ, E PA	Mark Hahn	201-259-5368
NH, VT, ME, MA, CT, Albany NY	Paul Rouillard Paul Snell	Paul R: 978-852-5226 Paul S: 978-852-5229
W NY, W PA, N WV, Cleveland OH	Joe Boris	330-881-9181
Chicago IL, Milwaukee WI	Eric Swanson	630-335-9932

## Shipping

**Carrier:** Standard shipping is via FedEx Ground. Expedited shipping is available upon request and at additional charge.

**Shipping point:** All products ship from Glendale AZ USA.

**Pricing:** Product prices do not include shipping, which is added to the invoice. There is no additional charge for drop shipment.

## Customer Service

Monday – Thursday: 7:00 AM – 4:00 PM Mountain Standard Time

Friday: 7:00 AM – 12:00 PM Mountain Standard Time

## Delivery Terms

**Lead Time:** Consumable orders are shipped same or next business day unless specified on customer's purchase order. Equipment orders are shipped within 10 business days of order date unless specified on customer's purchase order. Lead times are subject to acts of God, labor disputes, transportation strikes, or any conditions beyond control of OSO PURE.

**Promotional Pricing:** Orders booked to take advantage of promotional pricing must be shipped and billed prior to that promotion's expiration date.

# Maintenance Instructions

All OSO Pure equipment requires annual replacement of filters, lamps, cells and other consumables unless more frequent attention is warranted due to local water & air conditions. Each piece of equipment includes an Operations Manual that specifies the maintenance interval for your equipment.

## Manufacturer's Warranty

Faulty parts will be repaired or replaced as determined by dealer service representative & customer support agreement. No claim for labor or consequential damages will be allowed.

**Equipment:** All equipment sold and installed by authorized OSO Pure dealers are warranted against defects in material and workmanship for a period of one (1) year from date of installation which shall be no later than six (6) months after date of purchase.

**Water Filters:** Filters clog due to local water conditions which indicates the filter is performing its function; such clogging is not subject to this warranty.

**Deionization (DI) filters:** DI filters have a specific capacity to absorb hardness from water. Water hardness, sodium content and volume of DI water used dictates how long DI filters last. Premature exhaustion of DI filters is not subject to this warranty.

**UV Lamps:** Lamps are warranted for 30 days.

**Exclusions:** Warranty does not cover damage incurred in shipping, improper installation, unauthorized alteration, misuse, negligence, accident, excessive wear or exposure to the elements.

## Return & Refund Policy

OSO Pure will accept returns and unused product within 30 days of ship date, 90 days at company discretion subject to the following conditions:

The product must be unused, saleable, without any visible, cosmetic or internal damage, including all power supplies, mounting hardware or included items and returned in the original shipping materials.

To obtain Return Material Authorization (RMA), please email [support@osopure.com](mailto:support@osopure.com) with dealer/distributor, purchase order number, reason for return, and practice name, address, phone number, contact person if not already on the original purchase order.

Ship product to:

OSO PURE  
5175 W PHELPS RD STE 1  
GLENDALE, AZ 85306

RMA # must be on and in package along with customer's contact information including phone number.

RETURN shipping cost is the customer's responsibility.

After receipt and inspection of returned product, OSO PURE will either credit the customer's account or return payment via payment card. All credits are for the invoiced price with taxes, less discounts taken & restocking fee of 25%. Shipping and handling charges are not subject to refund.

O-SO PURE Dental  
Product Selection Guide 2026

SPECIFY THIS SYSTEM → TO HANDLE THESE APPS ↓		<div style="display: flex; justify-content: space-between; text-align: center;"> <div style="width: 10%;">SC-100</div> <div style="width: 10%;">TK-6 larger tank for SC-100</div> <div style="width: 10%;">SC-400</div> <div style="width: 10%;">TK-10 larger tank for SC-400</div> <div style="width: 10%;">TK-17H larger tank for SC-400</div> <div style="width: 10%;">MR-10E UV disinfected water</div> <div style="width: 10%;">MR-10 UV disinfected water</div> <div style="width: 10%;">MR-1THO (pipe adapter)</div> <div style="width: 10%;">MR-1TFO (pipe adapter)</div> <div style="width: 10%;">ADG-3600D direct MR-10E ShockWater™</div> </div>										
		2026 MSRP	\$3,240	\$307	\$5,989	\$440	\$913	\$6,747	\$6,181	\$202	\$138	\$3,458
Catalog Page #		8		10				12	12			14
PRACTICE WATER REQUIREMENTS	STERILIZATION CENTER	Autoclave & Sterilizer <i>(distilled-quality)</i>	X		X							
		DI Dispensing Gun	X		X							
		# of Instrument Washer(s) <i>(DI water rinse cycle)</i>		1	1	2+	2+					
	DENTAL UNIT WATER DELIVERY VIA	Dental Unit Bottles <i>using tablets or straws</i>	X		X							
		Direct Connect / City Water <i>(no dental unit bottle)</i>							X	X		
		Direct Connect / City Water <i>weekly ShockWater™</i>										X
	ADDITIONAL INFORMATION	Total Operatories w/one 2L bottle	8	15	15	35	49					
		Recharge Rate <i>(gallons / hour)</i>	4		16							
		Tank Size <i>(gallons)</i>	3.2	6	6	10	17					
		Flow Rate <i>(gpm = gallons / minute) or (lpm = liters / minute)</i>							10 gpm	10 gpm		2.5 gpm
Pipe Sizes <i>(inches)</i>								1"	1"	1½", 1¼"	¾"	¾" GH
Bypass								X	X			X
Electric Solenoid <i>(120-120VAC, 24-24VAC)</i>								X				
Concentration (ppm O3)												20 - 32
Low & Zero Mineral (TDS)		X		X								

O-SO PURE Dental  
Product Selection Guide 2026

SPECIFY THIS SYSTEM → TO HANDLE THESE APPS ↓		SC-100	TK-6 larger tank for SC-100	SC-400	TK-10 larger tank for SC-400	TK-17H larger tank for SC-400	MR-10E UV disinfected water	MR-10 UV disinfected water	MR-1TH0 (pipe adapter)	MR-1TFO (pipe adapter)	ADG-3600D direct MR-10E ShockWater™	
		2026 MSRP	Catalog Page #	Drinking Water	Practice Open During Boil Water Advisories*							
CONFIGURATIONS / QUOTES	DENTAL UNIT BOTTLES	6 dental units w/2L bottles tablet, straw bacteria control autoclave; sterilizer no instrument washer	\$3,240									\$3,240
	12 dental units w/2L bottles tablet, straw bacteria control autoclave; sterilizer no instrument washer	\$3,240	\$307									\$3,547
	10 dental units w/2L bottles tablet, straw bacteria control autoclave; sterilizer instrument washer	\$3,240	\$307									\$3,547
	15 dental units w/2L bottles tablet, straw bacteria control multiple autoclaves & sterilizers instrument washer			\$5,989								\$5,989
	35 dental units w/2L bottles tablet, straw bacteria control multiple autoclaves & sterilizers 2 instrument washers			\$5,989	\$440							\$6,429
	49 dental units w/2L bottles tablet, straw bacteria control multiple autoclaves & sterilizers 2+ instrument washers			\$5,989		\$913						\$6,902
	CITY WATER	8+ dental units, 1.5" plumbing UV disinfection bacteria control integrated kill switch solenoid multiple autoclaves; sterilizers 2+ instrument washer			\$5,989		\$6,747		\$202		\$3,458	\$16,396
	8+ dental units, 1" plumbing UV disinfection bacteria control integrated kill switch solenoid multiple autoclaves; sterilizers 1 instrument washer	\$3,240					\$6,747			\$3,458	\$13,445	
	8+ dental units, 3/4" plumbing UV disinfection bacteria control kill switch solenoid by others multiple autoclaves; sterilizers 1 instrument washer	\$3,240						\$6,181		\$138	\$3,458	\$13,017

# SC-100

## COMPACT DENTAL STERILIZATION CENTER WATER PROCESSOR



*The Steri-Center 100 is an ultra-compact water system perfect for your sterilization center. It simultaneously handles dental unit bottles, autoclaves, sterilizers and instrument washer.*

### Features:

- Electric pump
  - **overcomes low tap water pressure**
  - consistent production at 4 gallons / hour
  - minimizes filter changes
- Produces 2 water types:
  - Mineral-free water for autoclave & sterilizer
  - Low-mineral water for dental unit bottles & instrument washer rinse cycle.
- 2 screw bracket & slim design for easy install in compact spaces
- Easy to maintain quick-change filters
- Includes
  - remote DI dispensing gun for direct fill of autoclave & sterilizer reservoirs
  - chrome faucet for dental unit bottle fill
  - 3.2 gallon storage tank
  - Miele & Hydrim hookup fittings

### Advantages:

- **Minimizes operating disruption**
- **Eliminates angry dentists / product returns**
- Quick-change filters **eliminate service calls**
- **Filters last entire year** for most practices (hard water or high sodium excluded)
- No mess QC filters keep your cabinet dry
- 1 year warranty

### Benefits:

- Simultaneously handles autoclaves, sterilizers, dental unit bottles and an instrument washer.
- Eliminates bottled water hassles
  - Trips to purchase
  - Storage area
  - Lifting of heavy bottles
  - Staff injuries.
- Optional 6-gallon tank (TK-6)
- Pre-2024 instrument washer kit (SC-1IWK)
  - 6-gallon tank
  - Miele & Hydrim hookup fittings

### Specifications:

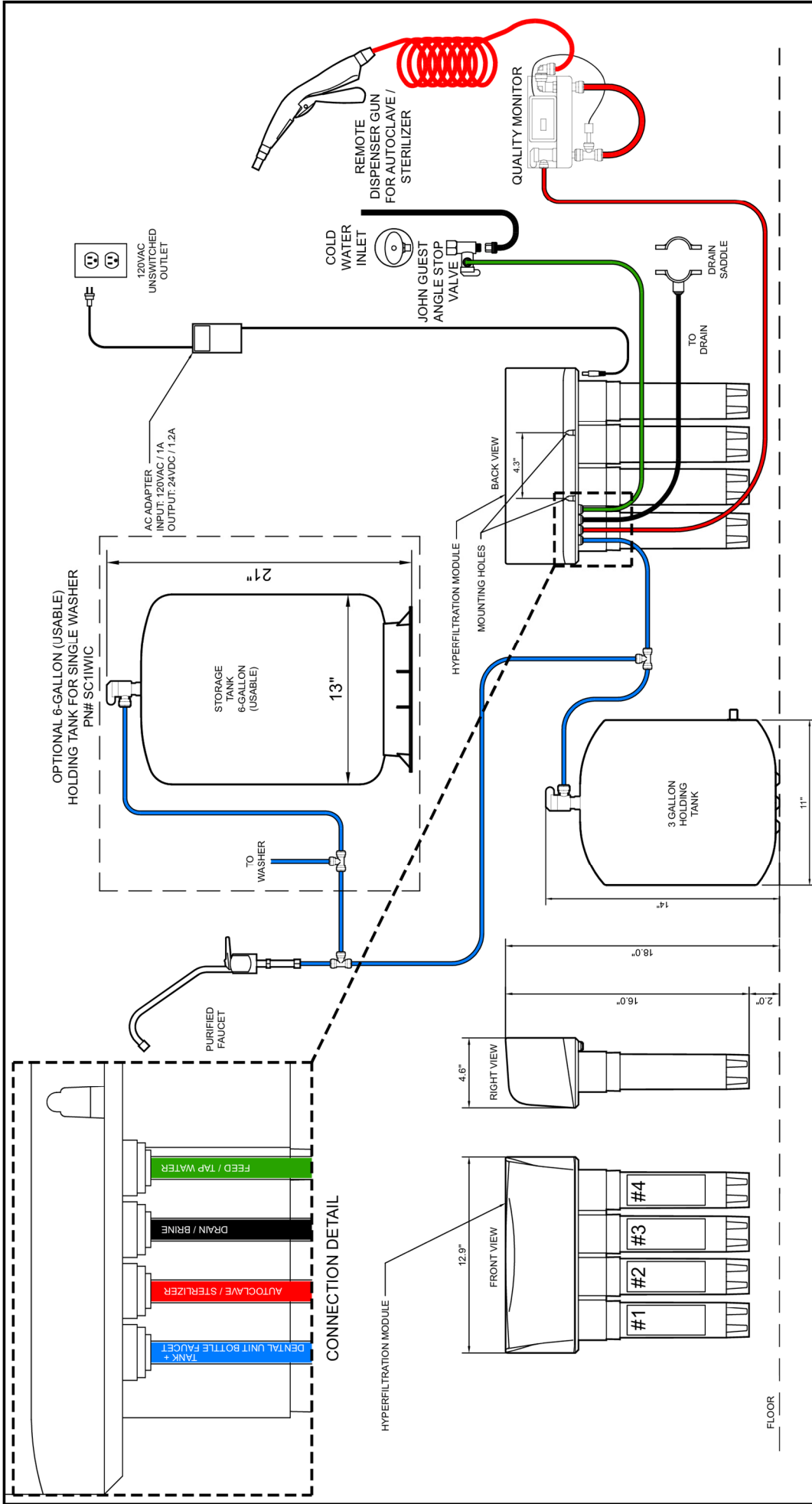
Tap water type	potable, unsoftened
Tap water temperature	40°F - 90°F
Tap water pressure	<b>20</b> - 75 psi
Production	4 gph / 100 gpd
Height	16 in
Width	12 in
Depth	5 in
Water Ports	1/4"
Electrical (1 plug)	110VAC / 60Hz / 2A
Shipping weight	23 lbs
Annual service kit	SC-1PM
2 DI filters	SC-1DI
6-gallon tank	TK-6
Pre-2024 instrument washer kit	SC-1IWK




Phone: 1-800-676-7873

E-mail: [sales@osopure.com](mailto:sales@osopure.com)

Website: [www.osopure.com](http://www.osopure.com)



		<b>SC-100</b> <b>STERI-CENTER SYSTEM</b>	
TITLE	DATE	SIZE	SHEET
	08/01/22	B	1 OF 1
SCALE	DO NOT SCALE	REV	PART NO.
		-	

*Note: Do not use with water that is microbiologically unsafe or of unknown quality. This device is only intended to be used as prescribed in the operation manual any miss-use, abuse improper installation or maintenance voids any and all warranties and claims.*

# SC-400

## DENTAL STERILIZATION CENTER WATER PROCESSOR



*The Steri-Center 400 is tailored to the sterilization center requirements of large practices & clinics. It simultaneously handles high bottle counts, multiple instrument washers and large autoclave & sterilizer stacks. It's the perfect solution for future-proofing your growing practice.*

### Features:

- Electric pump
  - **overcomes low tap water pressure**
  - consistent production at 16 gallons / hour
  - minimizes filter changes
- Produces 3 water types:
  - Mineral-free (DI) water for autoclave & sterilizer stacks
  - Low-mineral water for instrument washer
  - Low-mineral **disinfected** water for dental unit bottles.
- Produces 16 gallons per hour (400 gpd).
- Easy to See LED & Gauge Diagnosis Center.
- Revolutionary design for easy install & service
  - handle for easy lift in/out of cabinet
  - zero-mess filter changes from top
- Includes
  - remote DI dispensing gun for direct fill of autoclave & sterilizer reservoirs
  - chrome faucet for bottle fill
  - 6 gallon tank
  - Miele & Hydrim hookup fittings

### Advantages:

- Eliminates frequent DI filter changes with extended life filtration.
- Top mount filter replacement eliminates messy filter changes keeps your cabinets dry.
- Power-driven system eliminates water shortages, increases delivery pressure.

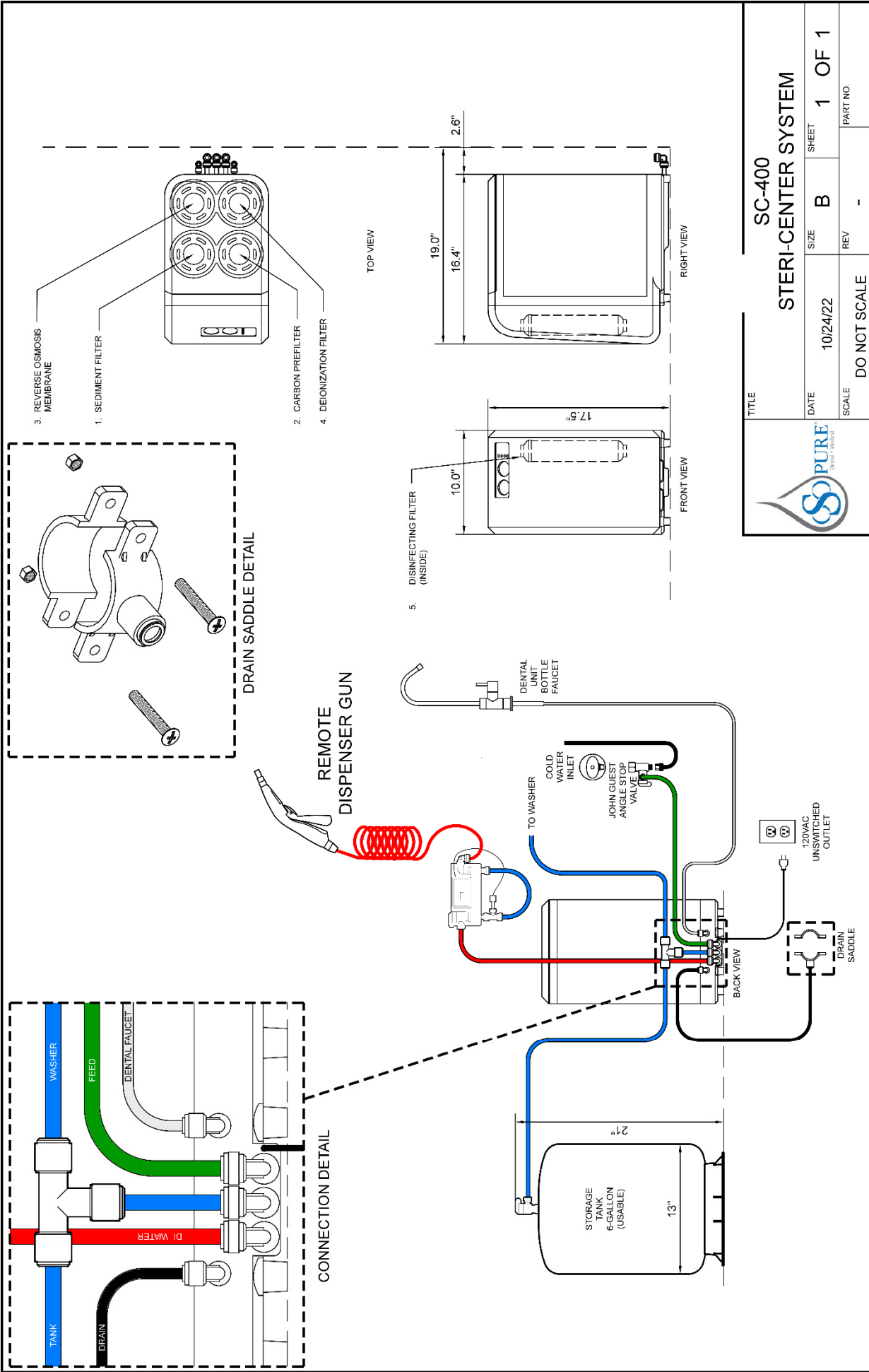
### Benefits:

- Designed for large practices & clinics. Simultaneously handles high bottle counts, multiple instrument washers, large autoclave & sterilizer stacks.
- Eliminates bottled water hassles
  - trips to store
  - storing the bottles
  - lifting of heavy bottles
  - staff injuries.
- Powered design overcomes water pressure and temperature deficiencies.
- Patented final purity cartridge.

### Specifications:

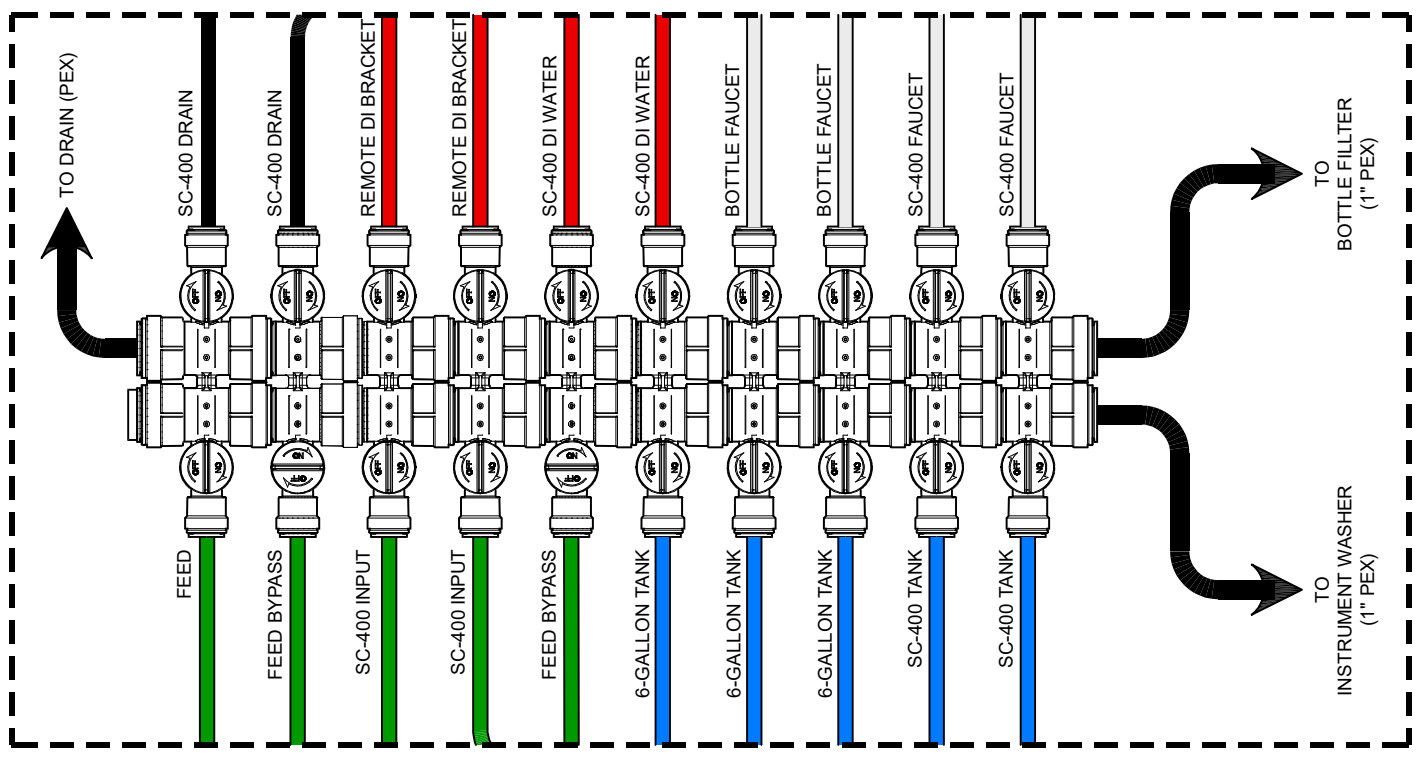
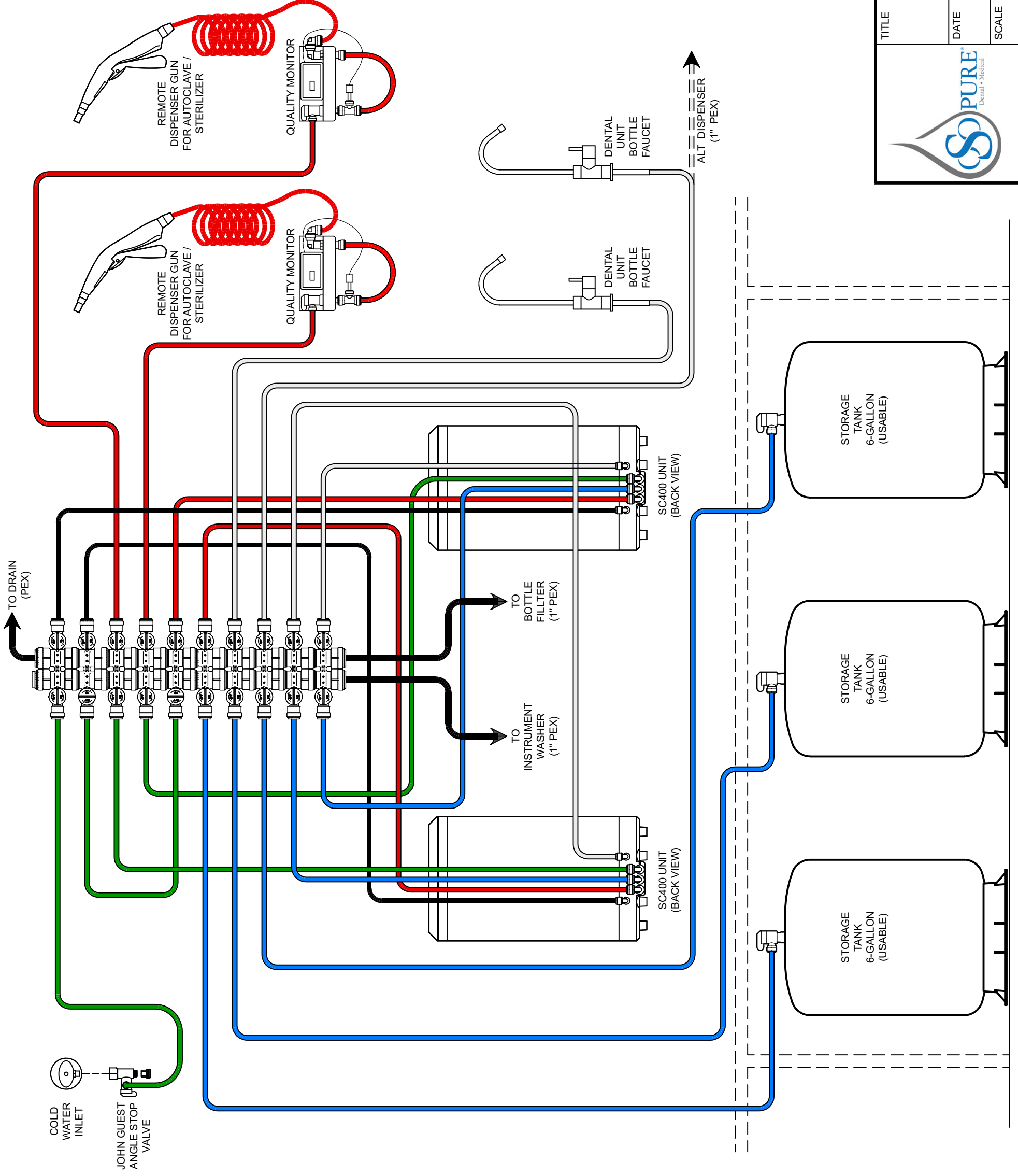
Tap water type	potable, <b>unsoftened</b>
Tap water temperature	40°F - 90°F
Tap water pressure	<b>20</b> – 75 psi
Production	16 gph / 400 gpd
Height	17.5 in
Width	10 in
Depth	19 in
Water Ports	3/8"
Electrical (1 plug)	110VAC / 60Hz / 2A
Shipping weight	42 lbs + 26 lbs
Annual service kit	SC-4PM1
1 DI filter	SC-4DI
10-gallon tank	TK-10
Instrument washer kit	included



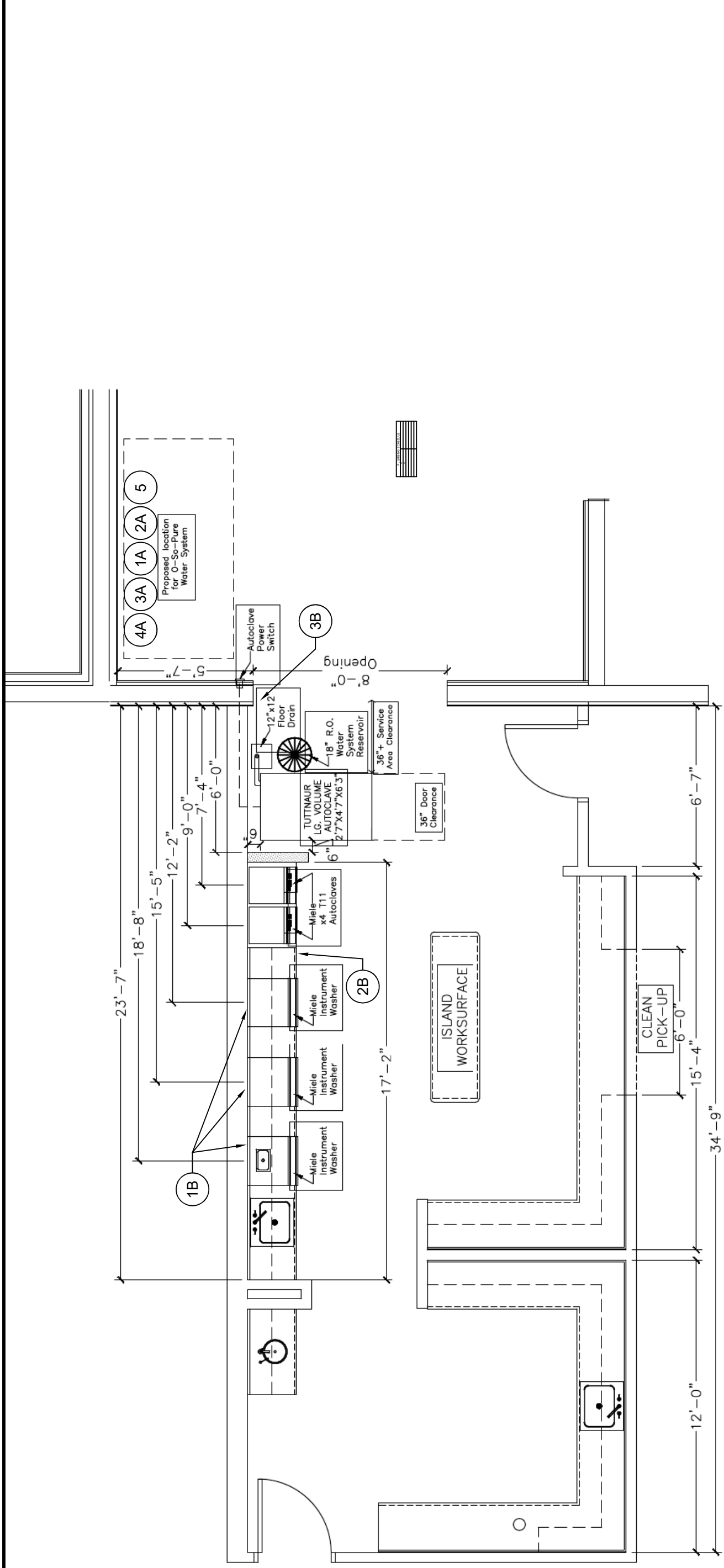


TITLE		SC-400	
STERI-CENTER SYSTEM			
DATE	10/24/22	SIZE	B
SCALE	DO NOT SCALE	REV	-
SHEET		1 OF 1	
PART NO.		PART NO.	

*Note: Do not use with water that is microbiologically unsafe or of unknown quality. This device is only intended to be used as prescribed in the operation manual any miss-use, abuse improper installation or maintenance voids any and all warranties and claims.*



TITLE		DUAL SC-400 STERI-CENTER SYSTEM	
DATE	11/6/2022	SIZE	B
SCALE	DO NOT SCALE	SHEET	1 OF 2
		REV	-
		PART NO.	



PLUMBING SCHEDULE	
1A	RO PEX TO INSTRUMENT WASHER
1B	3/4" GARDEN HOSE SPIGOT FOR LOW MINERAL RINSE CYCLE WATER
2A	DI PEX TO TUTTINAUER AUTOCLAVES
2B	REMOTE DI DISPENSE GUN BRACKET
3A	RO WASTEWATER TO DRAIN
3B	PEX SECURED AT DRAIN
4A	PEX OR POLYTUBE TO BOTTLE FILL FAUCETS
4B	BOTTLE FILL FAUCET
5	FEED WATER SUPPLY FAUCET RISER ANGLE STOP VALVE



TITLE

DUAL SC-400  
STERI-CENTER SYSTEM

DATE

11/6/2022

SIZE

B

SHEET

1

OF 2

SCALE

DO NOT SCALE

REV

-

PART NO.

# MR-10 / MR-10E

## MECHANICAL ROOM



**Complete practice protection against waterborne pathogens including bacteria, viruses and cysts. Solenoid valve ready to wire to customer's remote kill switch panel (MR-10E). When paired with our ADG-3600D waterline disinfectant, makes for a perfect chemical-free dental unit water solution.**

### Features:

- Multi-stage filtration
- Germicidal UV-C light chamber
- Clear 1<sup>st</sup> stage filter housing
- Flow rate up to 15 gallons per minute
- Multi-stage pressure gauges
- Manual Bypass & pressure relief valve
- Quick-Connect water input & output ports
- One year warranty
- MR-10E model is kill switch compatible
  - remote 24VAC panel (by others) or
  - switched 110VAC

### Benefits:

- Reduces sediment, chlorine, volatile organic chemicals, odors, cryptosporidium & giardia
- Reduces viable bacteria by 99.95%.
- Visually monitor filter saturation
- Differential pressure troubleshooting
- Change filters without disrupting practice
- Makes great tasting drinking water.
- Stay open during most boil water advisories.

### Companion dental unit waterline shock system:

- ADG-3600D
- Disinfects the practice with two easy steps
- Multiple other dental uses
  - Surface disinfection
  - Ultrasonic fill

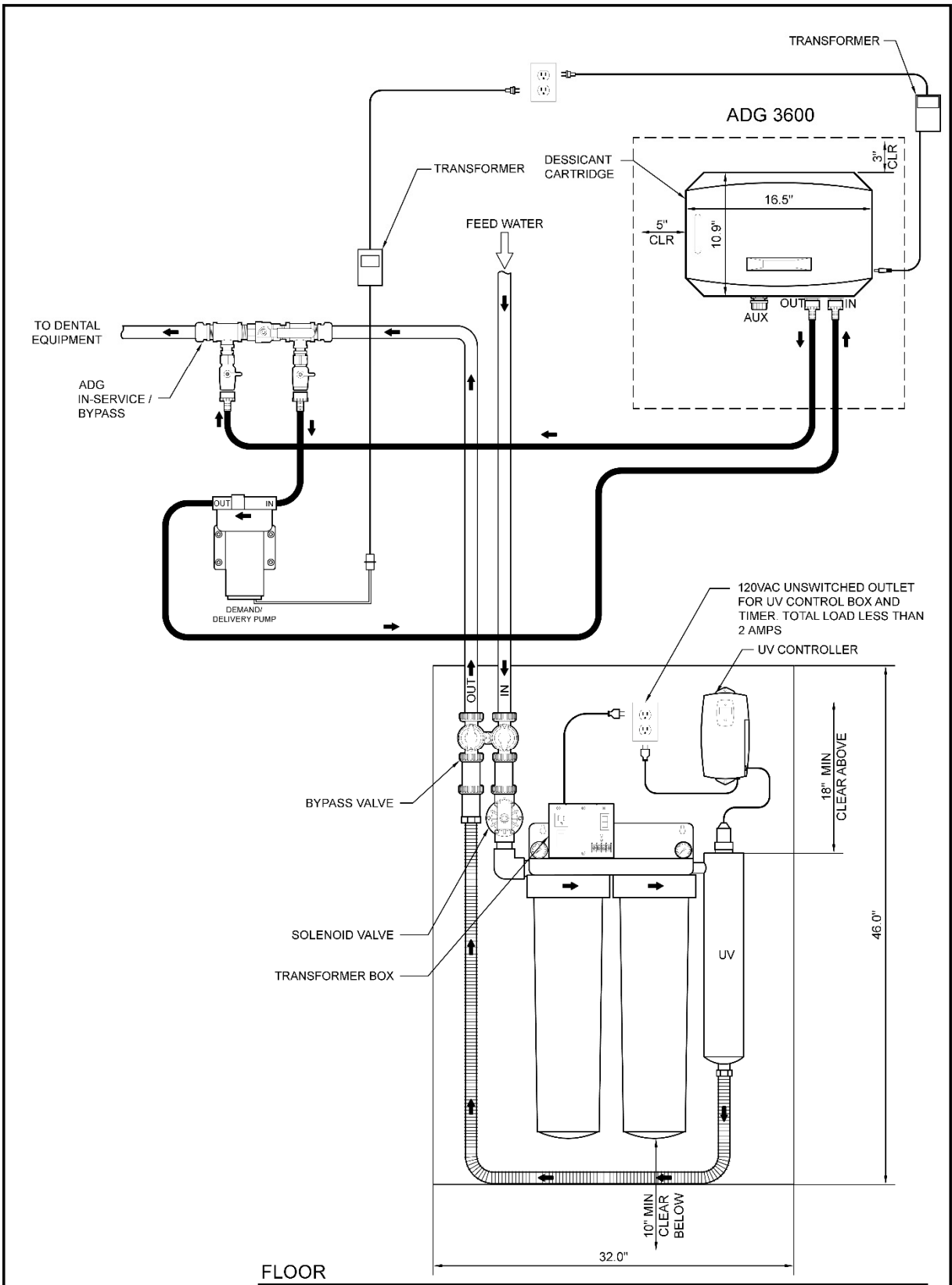
### Advantages:


- Fits 1" standard plumbing.
  - For ¾", order MR-1TF0 also.
  - For 1 ¼" & 1 ½", order MR-1TH0 also.
- Model MR-10E eliminates separate remote water shutoff valve.
- Filters & disinfects the entire practice water supply.
- When combined with our ADG-3600D, provides complete shock disinfection throughout your practice

### Specifications

Part # with solenoid	MR-10E
Part # without solenoid	MR-10
Annual service kit	MR-1PM1
Tap water type	Potable, low hardness
Tap water temperature	40°F - 80°F
Tap water pressure	40 – 75 psi
System pipe size	1"
Water I-O ports: standard	1" input / 1" output
Water I-O ports: ¾"	MR-1TF0
Water I-O ports: 1 ¼" & 1 ½"	MR-1TH0
Flow output	10 gpm
Height	36 in / 93 cm
Width	24in / 62 cm
Depth	12 in / 31 cm
Weight	50 lbs / 23 kg
Electrical (2 outlets)	110V / AC / 60Hz / 3A
Companion dental unit waterline disinfection	ADG-3600D





	TITLE		
	MR-10E BYPASS-LEFT & ADG 3600-D		
	DATE	SIZE	SHEET
	04/28/24	B	1 OF 1
SCALE	REV	PART NO.	
DO NOT SCALE	-		

# ADG-3600D

## AQUIOUS DISINFECTANT GENERATOR FOR

## CITY WATER DENTAL UNITS



*This version of the ADG is configured for periodic shocking of plumbing-attached dental units. The ADG-3600B converts tap water into a safe, endless stream of powerful disinfectant perfect for easy, frequent & free shocking of dental unit plumbing. Auxiliary port can be plumbed to the sterilization center for surface disinfection bottles, ultrasonic cleaner fill and hand washing, reducing costly chemical disinfectants.*

### Features:

- Easily shock your plumbing-attached dental unit waterlines:
  - Set bypass valve handles to shock mode
  - Open far-end faucet(s) (1 included)
  - Remove tools from waterlines, secure open end into sink, activate foot control
  - Adjust faucet to optimize flow through dental unit waterlines.
  - After 10 minutes, return faucet, bypass & tools to original positions.
- Automatically powers on when faucet turns on.
- Auxiliary port for
  - surface disinfection spray bottle
  - ultrasonic cleaner fill
- Includes:
  - ½" faucet
  - demand delivery pump
  - stainless steel hoses

### Benefits:

- 2.5 gallons / minute flow.
- Eradicates biofilm from dental unit waterlines.
- Compact, easy to install, simple to use.

### Advantages:

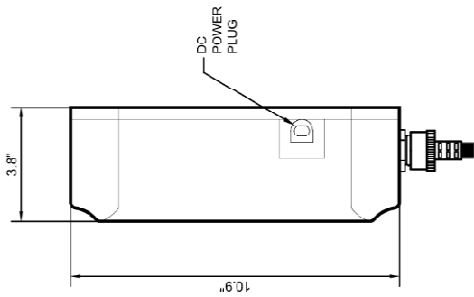
- Reduces or eliminates
  - purchase of waterline tablets & straws.
  - pesticides in patient's oral cavity.
  - chemicals being released to drain/environment.
  - staff not complying with waterline disinfection procedures.
  - dental unit waterline clogging from tablet residue.
- 1 year warranty
- Practice **pesticide-free** dentistry

### Specifications

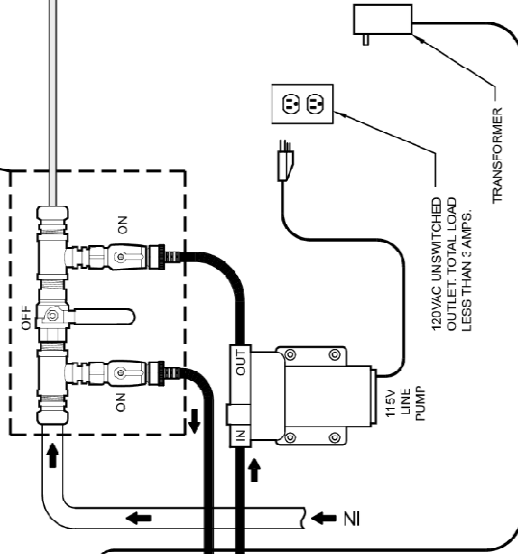
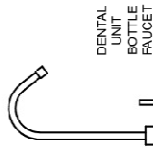
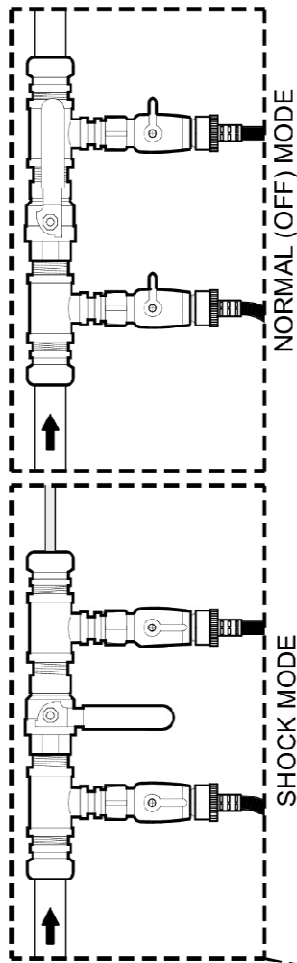
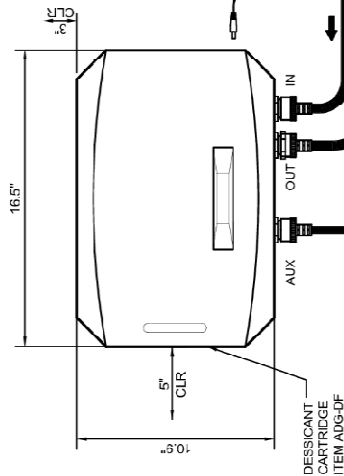
Tap water type	potable
Tap water temperature	40°F - 80°F
Tap water pressure	40 – 75 PSI
System pipe size	¾" male garden hose
Flow output	Up to 2.5 GPM
Height	12.5 in / 32 cm
Width	17 in / 42 cm
Depth	3.75 in / 10 cm
Weight	5.5 lbs / 2.49 kg
Electrical transformer	110V / AC / 60Hz / 1.5A or 240V / AC / 50Hz / 1.5A
Internal electrical	12V / DC / 3000mA



ADG-3600  
SIDE VIEW



ADG-3600



3/8" ANGLE STOP VALVE  
NOTE: ENSURE NO DEAD  
ENDS/LEGS



TITLE

ADG 3600-D

CITY WATER INSTALLATION

DATE

07/31/22

SIZE

B

SHEET

1

OF 1

SCALE

DO NOT SCALE

REV

-

PART NO.



# Air Disinfecting Purifier-70

(ADP-70)

## Overview

The ADP-70 utilizes pro-active Photocatalytic Oxidation (PCO) technology to **sanitize** the practice's **air and surfaces**. Up to 99.96% of Bacteria, Viruses, Mold, Mildew, VOC's, CAC's and other contaminants are continuously rendered harmless, where they are, **without noisy, drafty fans**. Odors are also eliminated, creating a cleaner, safer work environment. The ADP-70 gives you additional protection by reducing pathogens in the workplace.

## Applications

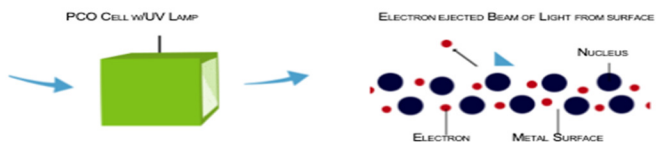
The ADP-70 is ideal for:

- Operatory Areas & Labs
- Patient Waiting & Breakrooms
- Steri-Centers & Prosthetic Processing
- Any Unconfined Area
- For multi-room use only



## About the Technology

ADP-70 utilizes PCO technology to generate advanced oxidation, primarily consisting of ionized hydrogen peroxide vapor. PCO replicates nature's purifying process through the use of ultraviolet energy to activate a multi-metal catalyst, converting water vapor into oxidizers including peroxide and hydroxyls ( $\text{OH}^-$ ). These oxidants inactivate microbes via cell lysing or by changing the molecular structure of chemical contaminants.



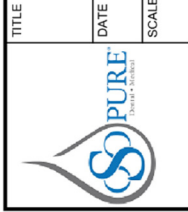
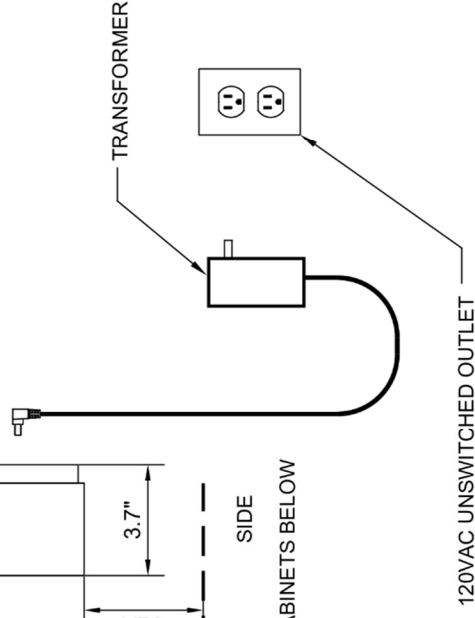
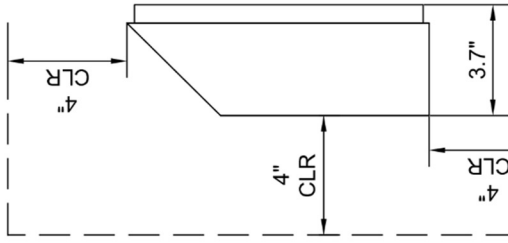
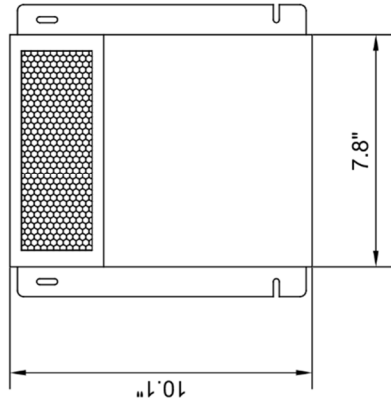
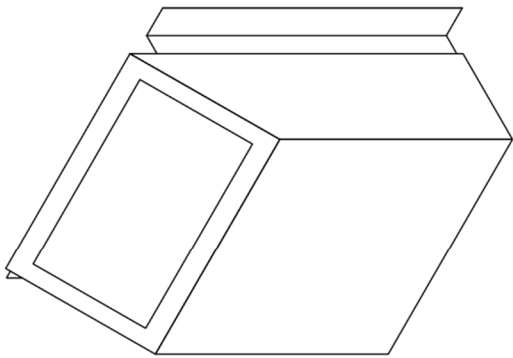
THE ELECTRONS TRANSFERRED COMBINE WITH AIR ( $\text{O}_2$ ) AND WATER ( $\text{H}_2\text{O}$ ) (SUPPLIED BY THE MOISTURE FROM THE PCO CELL'S HYDROPHILIC COATING) TO FORM POSITIVELY AND NEGATIVELY CHARGED CLUSTER IONS (HYDROXYL RADICALS).



THE HYDROXYL RADICALS WORK TO RUPTURE THE SURFACE MEMBRANE LEADING TO MALFUNCTION AND EVENTUAL DEATH OF THE PATHOGEN CELL WITH ONLY CARBON DIOXIDE AND WATER VAPOR REMAINING.

## ADP-70 Specifications:

DIMENSIONS	WEIGHT	ELECTRICAL	PERFORMANCE
10.25"H	3.0 lbs	24V DC, .54 amps	airflow: 70 CFM
9.75"W		115 VAC adapter included	coverage:
3.75"D		O3 output: <0.05 ppm	Typical practice concept coverage
<b>*1 Year Warranty*</b>			1000 open / 800 not-open
<b>**Meets or Exceeds: EPA, FDA, OSHA &amp; NIOSH National Government Safety Standards**</b>			
<b>*Tested and Certified to CARB Standards*</b>			



TITLE		ADP-70	
DATE	05/05/2020	SIZE	B
SCALE	DO NOT SCALE	SHEET	1 OF 1
		REV	-
		PART NO.	



# ADP-V Series

## AIR DISINFECTING PURIFIER - VENTILATION

*The ADP-V Series air purifier installs in the practice's HVAC system attacking and eliminating up to 99.9% of viruses, bacteria, mold, odors and VOC's in the air and on surfaces. Unlike air filtration devices, the ADP emits powerful oxidizers that attack pathogens at the point of origin as opposed to waiting being Pro-Active. Our process provides an extra layer of protection 24/7 to you, your staff and your patients.*



Pictured model V1

### Features:

- Utilizes your existing system, purification is distributed evenly throughout the practice
- Reduces airborne and surface contaminants such as bacteria, viruses, VOCs, mold, and mildew
- Purifies the HVAC ducts and kills mold on the A-Coil and drip pan
- Eliminates odors at the source
- Ideal for most indoor spaces
- Safe for humans and pets
- LED function lights confirm continuous operation
- Low to no maintenance – replace cell every 2 years.

### Advantages:

- No costly consumable filters to replace
- Pro-Active Technology - fights Viruses at point of emission.
- Uses your duct system for even room coverage and distribution that competitors lack
- Exclusive 1 year warranty

\*\*\*\*Exceeds EPA, FDA, OSHA and NIOSH regulatory safety standards\*\*\*\*

### Installation:

- Three models to choose from that are installed near your air handler. Select the size that correlates to the office area covered by each of your air handlers
  - ADP-V1 covers up to 1,000 sq ft
  - ADP-V2 covers up to 2,000 sq ft
  - ADP-V3 covers up to 5,000 sq ft
- Easy to wire low voltage connection (24v) direct to your system

### Sizing as easy as 1-2-3

- You only need to know your square footage and the number of a/c units in your practice.

Example:

- Take a 2000sqft practice with a single a/c system
  - Requires one ADP-V2
- Take a 2000sqft practice with two a/c systems
  - Requires two ADP-V1

Model/Item numbers: ADP-V1  
ADP-V2  
ADP-V3

# OSO PURE Dental 2026 Retail Price List

Item Ordering Code	Description	2026 Retail Price
<b>STERILIZATION CENTER Water Systems</b>		
SC-100	Mineral-free water for autoclave & sterilizer. Low-mineral water for up to 8 dental unit bottles. Rinse cycle water for one instrument washer (add SC-1IWK). Makes 4 gallons/hour. 3.2 gallon tank. Quick-change cartridges.	\$3,240
TK-6	6 gallon add-on water storage tank, 3/8" port. Includes 3/8" tank valve & 1/4" reducer. Add to SC-100 for instrument washer or higher operatory count.	\$307
SC-1IWK	Instrument washer kit for pre-2024 SC-100. Includes 6 gallon tank, washer manifold & install fittings. Also supports additional dental unit bottles.	\$521
SC-1PM	SC-100 annual service kit. Contains all 4 cartridges required.	\$440
SC-1DI	Single DI cartridge for SC-100. Replace when indicated by DI water quality monitor.	\$233
SC-400	Mineral-free water for autoclave & sterilizer. Low-mineral water for dental unit bottles. Rinse cycle water for multiple instrument washers. <b>For larger practice/clinic.</b> Makes 16 gallons/hour. 6 gallon tank. Quick-change cartridges.	\$5,989
SC-DM2	Distribution manifold for SC-400 Duo system	\$2,397
TK-10	10 gallon add-on water storage tank, 3/8" port. Includes 3/8" tee & 1/4" reducers.	\$440
TK-17H	17 gallon add-on water storage tank, 3/8" port. Includes 3/8" tee & 1/4" reducers.	\$913
SC-4PM	SC-400 annual service kit. Contains all 5 cartridges required.	\$654
SC-4DI	Single DI filter Replacement Cartridge for SC-400. Replace when indicated by DI water quality monitor.	\$258
<b>MECHANICAL ROOM (Centralized Water Filtration)</b>		
MR-10E	1" dental unit water bacteria control filter. <b>Includes remote water control valve (24VAC)</b> , manual bypass. Unlimited ops. Upto 10 GPM. Requires: tap water 40-75 PSI, 115VAC(1). Service kit: MR1PM1. Purchase ADG-3600D separately for waterline contamination control.	\$6,747
MR-10	MR10: 1" dental unit water bacteria control filter. Includes manual bypass. No remote water control valve. Unlimited ops. Upto 10 GPM. Requires: tap water 40-75 PSI, 115VAC(1). Purchase ADG-3600D separately for waterline contamination control.	\$6,181
MR-1TF0	Adapts MR-10E & MR-10 systems (1") to 3/4" building plumbing. Set of 2.	\$138
MR-1TH0	Adapts MR-10E & MR-10 systems (1") to 1-1/2" or 1-1/4" building plumbing. Set of 2.	\$202
MR-1PM1	Complete Annual Service Kit for MR-10 & MR-10E. Includes filters & UV lamp.	\$750
MR-1PM2	High Flow Annual Service Kit for MR-10 & MR-10E. Includes filters & UV lamp. Use only if filter clogging is an issue.	\$768
MR-1UVL	UV Lamp Only for MR-10 & MR-10E.	\$489
ADG-3600D	Shocks dental unit waterlines. Disinfects surfaces & upholstery. Creates powerful, chemical free disinfectant from tap water. Auxiliary output port. Includes 1" bypass valve assembly for cut-in to building plumbing.	\$3,458
ADG-DF	Replacement Desiccant FILTER for ADG-3600B / ADG-3600D	\$92
<b>Air Purification</b>		
ADP-70	Air Disinfecting Purifier-70. Controls pathogens & odors. Wall mount. Up to 2000 sq ft.	\$978
ADP-70PM	Replacement CELL for ADP-70 (replace annually)	\$191
ADP-70CA	Air Disinfecting Purifier-70 for CALIFORNIA. Controls pathogens & odors. Wall mount. Up to 2000 sq ft.	\$978
ADP-70PMC	Replacement CALIFORNIA CELL for ADP-70CA (replace annually)	\$191
ADP-70IP	Replacement INTAKE PAD for ADP-70 & ADP-70CA (12 pack, replace monthly)	\$62
ADP-70FN	Replacement FAN for ADP-70 & ADP-70CA (as needed)	\$137
ADP-70TR	Replacement TRANSFORMER 110v plug in ADP-70 & ADP-70CA (as needed)	\$56
ADP-70FS	Replacement pack of 3 FUSES for ADP-70 & ADP-70CA (as needed)	\$14
ADP-V1	Air Disinfecting Purifier-Ventilation 1 HVAC Air Purification with 1,000sqft coverage	\$636
ADP-V1PM	Replacement CELL (replace annually)	\$264
ADP-V2	Air Disinfecting Purifier-Ventilation 2 HVAC Air Purification with 2,000sqft coverage	\$796
ADP-V2PM	Replacement CELL (replace annually)	\$281
ADP-V3	Air Disinfecting Purifier-Ventilation 3 HVAC Air Purification with 5,000sqft coverage	\$956
ADP-V3PM	Replacement CELL (replace annually)	\$360



# Water & Air System Interview

Thanks for letting us quote your project.

- Project info
  - Project name \_\_\_\_\_
  - Today's date \_\_\_\_\_ Order date (MM/YY) \_\_\_\_\_
  - Project type (circle all that apply):
    - new construction      build-out      practice remodel
    - full building          partial building
- Dental unit water
  - How many total operatories? \_\_\_\_\_ today    \_\_\_\_\_ + in future
  - How many dental units per operatory?    1    2    (circle one)
  - Will the dental units use self-contained bottle systems?
    - yes
      - bottle size \_\_\_\_\_ liters
    - no (city water)
      - **copper** or **plastic** dental unit plumbing? (circle one)
      - size    1/4"    1/2"    3/4"    1"    (circle one)
      - layout - dental unit home runs    main with laterals (circle one)
      - Point-of-entry plumbing
        - 3/4"      1"      1 1/4"      1 1/2"    (circle one)
- Sterilization center
  - # of sterilization centers \_\_\_\_\_ today    \_\_\_\_\_ + in future
  - # of autoclaves \_\_\_\_\_ today    \_\_\_\_\_ + in future
  - # of sterilizers \_\_\_\_\_ today    \_\_\_\_\_ + in future
  - # of ultrasonic cleaners \_\_\_\_\_ today    \_\_\_\_\_ + in future
  - # of instrument washers \_\_\_\_\_ today    \_\_\_\_\_ + in future  
   Hydrim      Miele      Tuttnauer    (circle one or all that apply)
- Air systems
  - Total square footage of practice \_\_\_\_\_
  - Square footage HVAC #1 \_\_\_\_\_
  - Square footage HVAC #2 \_\_\_\_\_
  - Square footage HVAC #3 \_\_\_\_\_
- Special instructions  
\_\_\_\_\_  
\_\_\_\_\_
- Dealer info
  - dealer \_\_\_\_\_ branch \_\_\_\_\_
  - specialist \_\_\_\_\_ phone \_\_\_\_\_
  - Email address \_\_\_\_\_

## OSO PURE use

- OSO PURE territory manager \_\_\_\_\_
- Quote # \_\_\_\_\_

## Notes

# OSO Pure's SC-Series Competitive Set

Criteria	SC-100 OSO Pure	SC-400 OSO Pure	VistaPure Crosstex	Sterisil AC+ Solmetex	Notes
Retail price	\$3,239	\$5,997	\$3,554	\$3,612	Overcomes low tap water pressure, maximum TDS removal & refresh rate. *Price for pump, tank pressure sensor & LOPSI solenoid, installation.
Pressure pump (integrated)	Y	Y	\$500*	\$500*	
Refresh rate (gal/hr)	4	16	Up to 4	Up to 2	<b>"Up to" indicates best possible results</b> should local water conditions conform to manufacturer's specifications of pressure & quality.
Tank Capacity (gal)	3.2 <sup>1</sup>	6.0 <sup>1</sup>	4.25	2.8	<sup>1</sup> SC Series high refresh rates support instrument washer with smaller tank, easier to place in cabinetry. Larger tanks available from all.
Quick-change filters	Y	Y	N	Y	Easy filter change by staff.
Filter change interval	1 year <sup>1</sup>	1 year <sup>1</sup>	Varies by filter <sup>2</sup>	Varies by filter <sup>2</sup>	<sup>1</sup> Except for practices with very high TDS tap water, change all SC-100 filters once annually (SCHEDULED). <sup>2</sup> Other systems exhaust filters randomly (DISRUPTIONS) depending on water quality & usage.
Complete PM kit (2026)	\$440	\$654	\$703 <sup>1</sup>	\$877 <sup>1</sup>	<sup>1</sup> 2024 pricing
Bottle fill faucet	Included	Included	Included	Included	
Autoclave fill wand	Included	Included	Included	Included	
Instrument washers	1	4+	1 <sup>1</sup>	0 <sup>2</sup>	<sup>1</sup> S3010 fittings kit required <sup>2</sup> Requires tank upgrade + fittings
Phone support	Factory techs	Factory techs	Call center script	Call center script	

Call OSO Pure @ 800-676-7873