


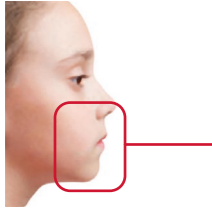


3D & 3D Ceph

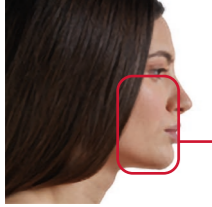
- 8 FOV
- 27 volumes
- HD voxel size: up to 80µm
- HD and Standard Acquisition Mode
- Fast reconstruction time
- Impression tray and plaster models scan available



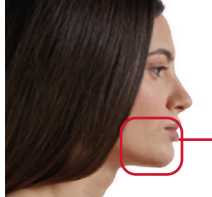
FOV 11x10cm
Full mouth evaluations, surgery, implants, orthodontics, sinuses.



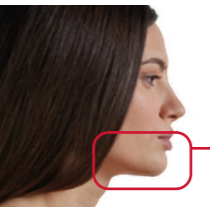
FOV 8x10cm
Children full mouth, orthodontics, sinuses.



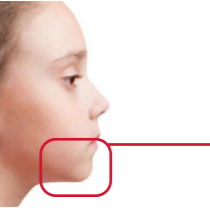
FOV 7x10cm
Periodontics, surgery, local implants.



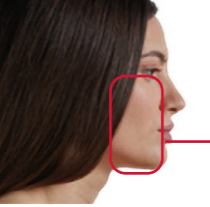
FOV 7x6,5cm
Endodontics, periodontics, implants.



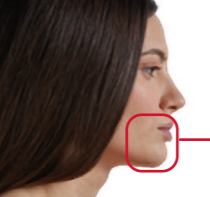
FOV 11x6,5cm
Surgery, periodontics, implants, orthodontics, tmj.



FOV 8x6,5cm
Children law jaw or upper jaw, surgery, periodontics, orthodontics.



FOV 6x10cm
Periodontics, surgery, local implants.



FOV 5x6,5cm
Endodontics, periodontics, local implants.

**Italian Core
International Mind**
+ 25 years of experience

Xline is the outcome of 25 years of history in the dental sector, with two very important phases: BlueX, our origins, and Fona, our further internationalization and development. Xline is an evolution of BlueX and Fona, it's our asset to achieve new people, goals, markets and, especially, our idea of innovation. With more than 11.000 Extraoral units and 65.000 intraoral generators installed worldwide we combine Italian mastery, latest technologies and digital radiography to imagine, design and create extraoral and intraoral equipments for dental and veterinary clinics.

Latest technology and people caring

Digital dentistry

Intraoral **imaging**



Extraoral **imaging**



Intraoral **sensors**

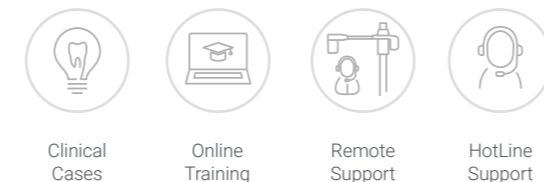


Based in **Italy**, present in the **US**, available **worldwide** 



Copyright Xline s.r.l., All rights reserved, Subject to technical changes and errors in text, LEAUSA005, v1, 202506

Count on us



Headquarter

Xline s.r.l.
Via G. Galilei 18
20057 Assago (MI) - Italy

Contacts

www.xlinxray.com
NUMERO TELEFONO



WEBSITE



Stellaris Family, Intraorals and Sensors



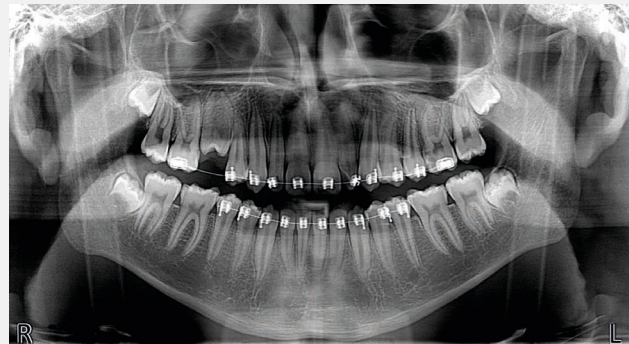
The **ultimate imaging flexible solutions** you have always dreamed of for your clinic



Made in Italy 

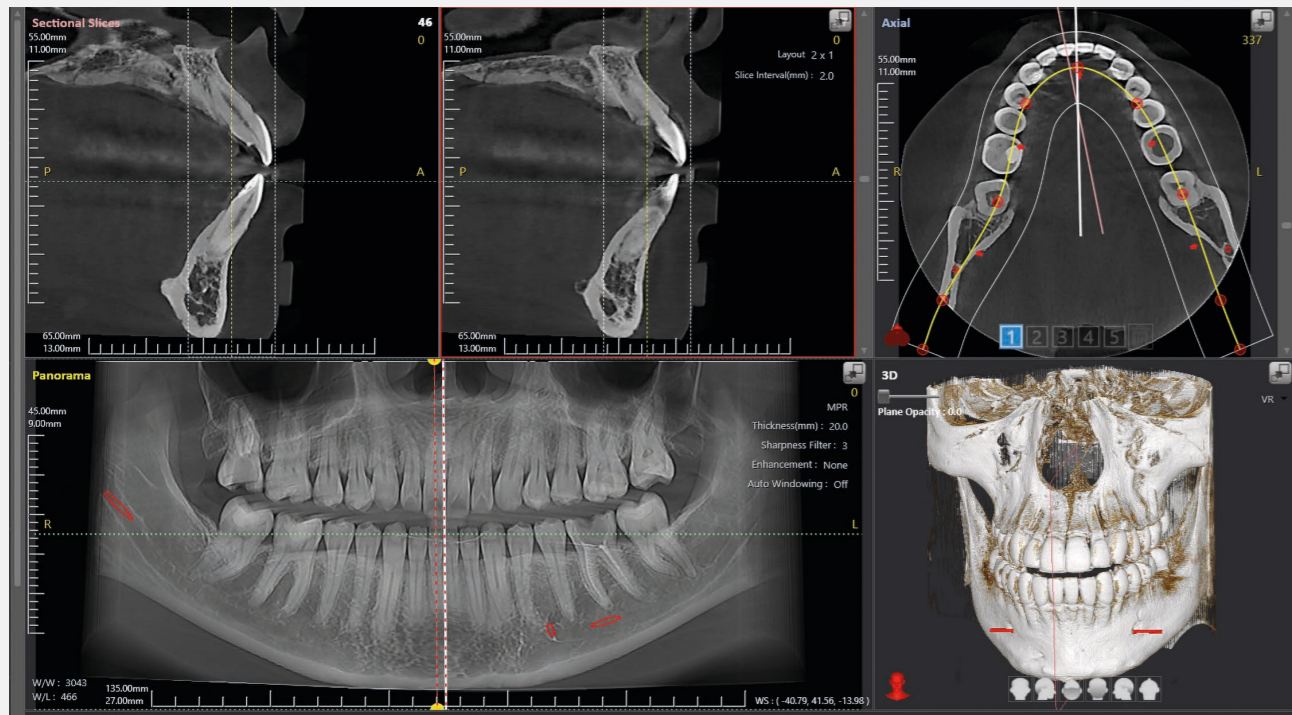
Superior Image Quality with the Ultimate IGZO Sensor Technology

- High image resolution at a very low dose thanks to the Ultra Low-Noise HW
- TRUVIEW® ART, the Advanced image Reconstruction Technology, enhances the image sharpness and leads to view small details
- DEPAI™ AI Denoising image processing algorithm for an high image quality
- Automatic image focusing



Unique Software Flexibility

- 3D Imaging Software included with 3D units
- Compatible with the majority PMS of US market (Eaglesoft, Dentrix, OpenDental...)
- Implant simulation included
- STL export
- Report



Plug & Play concept

Stellaris Family is a "ready to use" solution, as it comes with a pre-installed tower computer in the case of 3D and 3D ceph or with an optional laptop in the case of the 2D and 2D ceph, together with the latest imaging software by Xline.



• 0,5s!



• 0,2s!

Stellaris



One shot ceph

High performances and instant images with the CSI-CMOS One-shot flat panel.

Ultimate IGZO Sensor

With artificial intelligence applied to the denoising process.

Smart backlight

Enhancement of the patient comfort and immediate visual communication with the operator.

XDC

Advanced DC technology

State of the art DC technology means excellent image quality and all the details you need for your diagnosis.



Integration flexibility

Different configuration possibilities for comfortable and reliable positioning.

Precise settings for all exposures

Automatic exposure setting in just 3 steps for fast and high quality imaging.

StarX PRO



Integration flexibility

Available as a mobile and wall-mounted version. Four different extension arm lengths (11,8", 23,6", 31,5" and 39,4") and possibility to place the timer remotely, for even greater installation freedom and ease of use.

Ergonomic positioning

Stable, easy to adjust arm ensures accurate and reliable positioning every time.

8,2 fts cable length



Long lasting life

Flexible and resistant cable to grant a long sensor life.

Wide active sensitive area

The slim outline and space saving packaging facilitate the positioning and the visibility of the region of interest while positioning.

Plug and play solution

Thanks to the USB direct connection, StarX PRO is easy to install and always provides brilliant and real-time images.